

## Voss Street, E2

£650,000

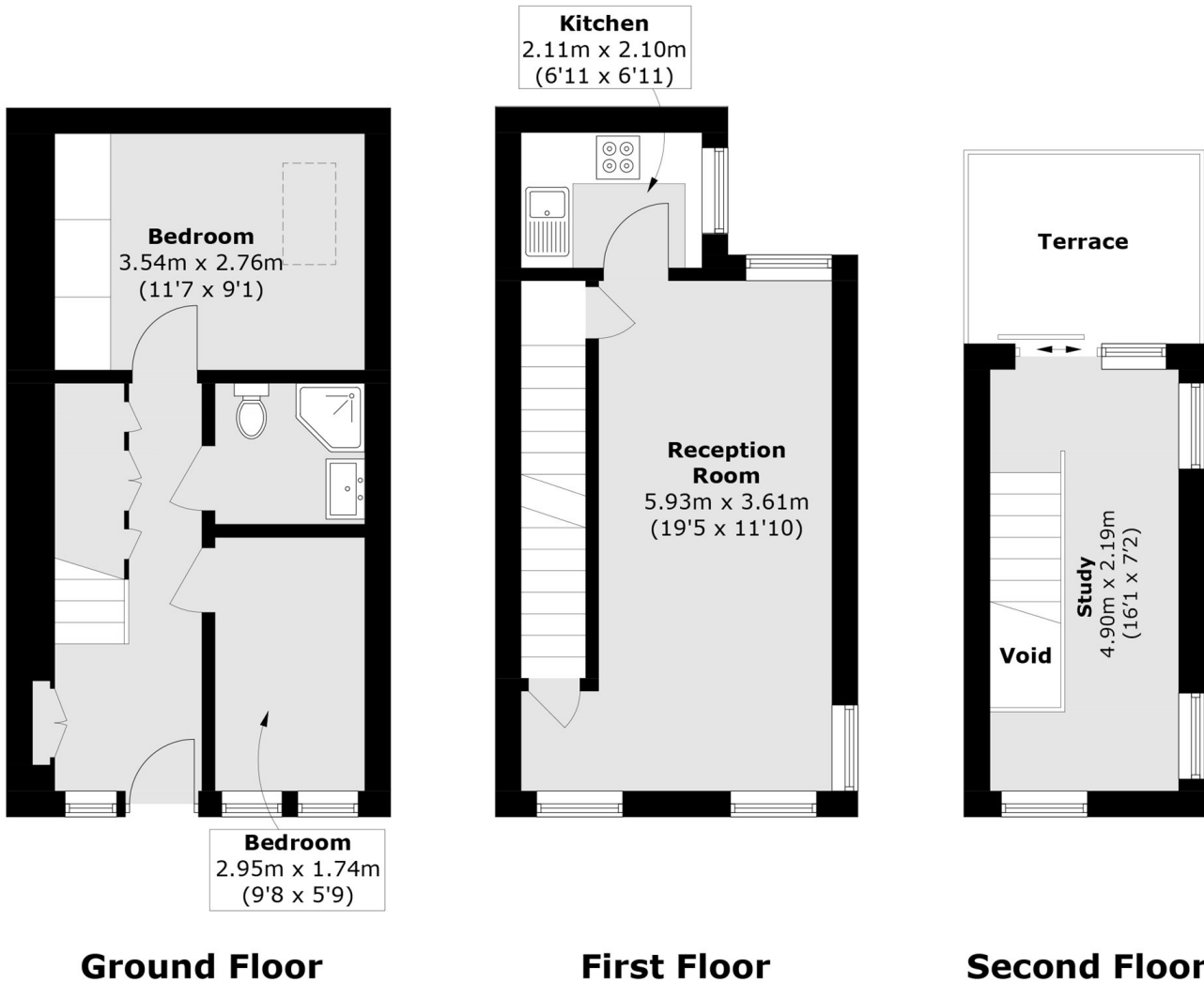
A modern two double bedroom three storey freehold house located down a popular cobbled terrace, Voss Street. This property has two double bedrooms on the ground floor with a family bathroom located on this floor too. The middle floor has an semi-open plan living area with a floor to ceiling window with ample space to dine and a recently modernised kitchen with in built appliances. The top floor has a bright home office/studio area and leads out onto the property's private terrace.

Voss Street is located just off of Bethnal Green Road with its abundance of shops, cafes and eateries. The nearest station is Bethnal Green on the Central line whilst the the amenities of Brick Lane, Columbia Road and Shoreditch are within short walking distance. The popular green space of Weavers Fields is a stones throw away.

### Features

- Two Double Bedrooms
- Freehold
- Modern interiors
- Sought after location
- Private terrace

# Voss Street, London, E2



Total area (approx.) : 64.5 sq. m (694.2 sq. ft)  
(Excluding Void)  
Terrace area : 5.9 sq. m (63.5 sq. ft)