



Windsor Court Hoxton Close

Ashford, TN23 5LS

Price £145,000

Impressive development specifically for the over 55's. Situated on the top floor, the accommodation comprises an entrance hall, open plan kitchen/living space, two bedrooms and four piece bathroom suite.

A lift services all floors with a welcoming reception area, residents lounge, guest suite and an electric buggy store. There attractive well maintained communal gardens with pond and plenty of parking for residents and guests.

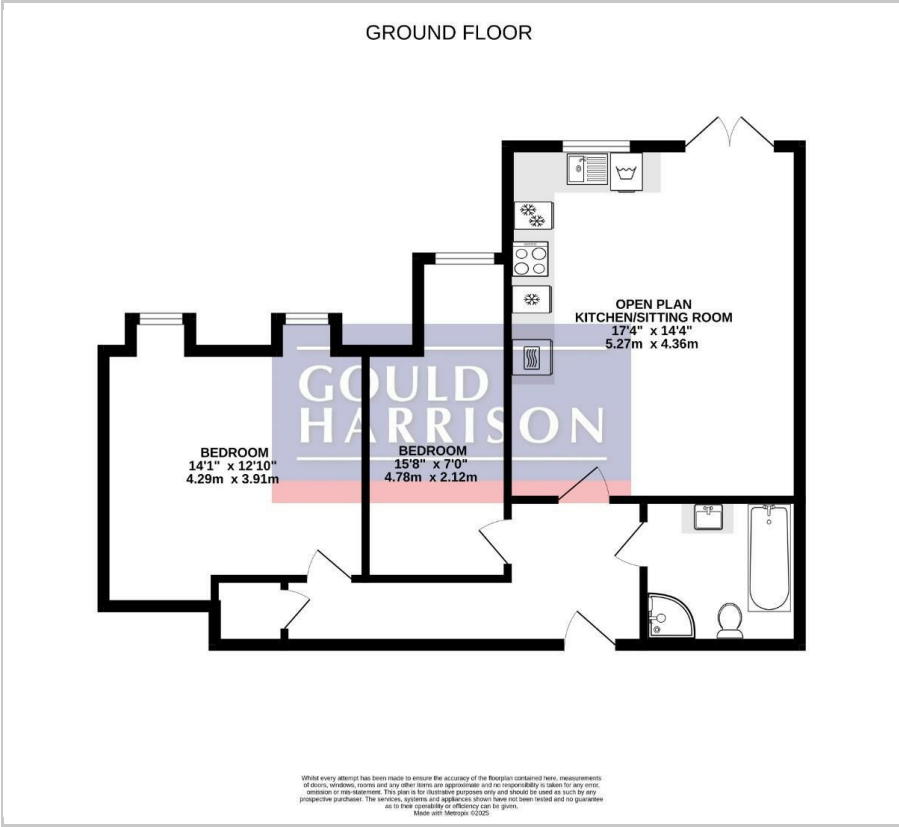
- RETIREMENT APARTMENT FOR OVER 55's
- TWO BEDROOMS
- OPEN PLAN LIVING ACCOMMODATION
- CLOSE TO LOCAL SHOPS AND AMENITIES
- LIFT TO ALL FLOORS
- NO CHAIN
- WELCOMING RESIDENTS LOUNGE
- ATTRACTIVE LANDSCAPED GARDEN AND PARKING
- LEASEHOLD - BALANCE OF 125 YEAR LEASE FROM 2006
- MANAGEMENT CHARGE: £4,867 pa / GROUND RENT: £395 pa

Viewing

Please contact our Ashford Office on 01233 646411 if you wish to arrange a viewing appointment for this property or require further information.



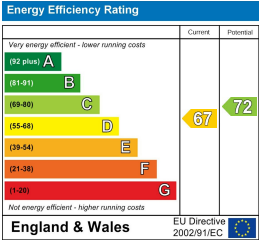
Floor Plan



Area Map



Energy Efficiency Graph



These particulars, whilst believed to be accurate are set out as a general outline only for guidance and do not constitute any part of an offer or contract. Intending purchasers should not rely on them as statements of representation of fact, but must satisfy themselves by inspection or otherwise as to their accuracy. No person in this firms employment has the authority to make or give any representation or warranty in respect of the property.