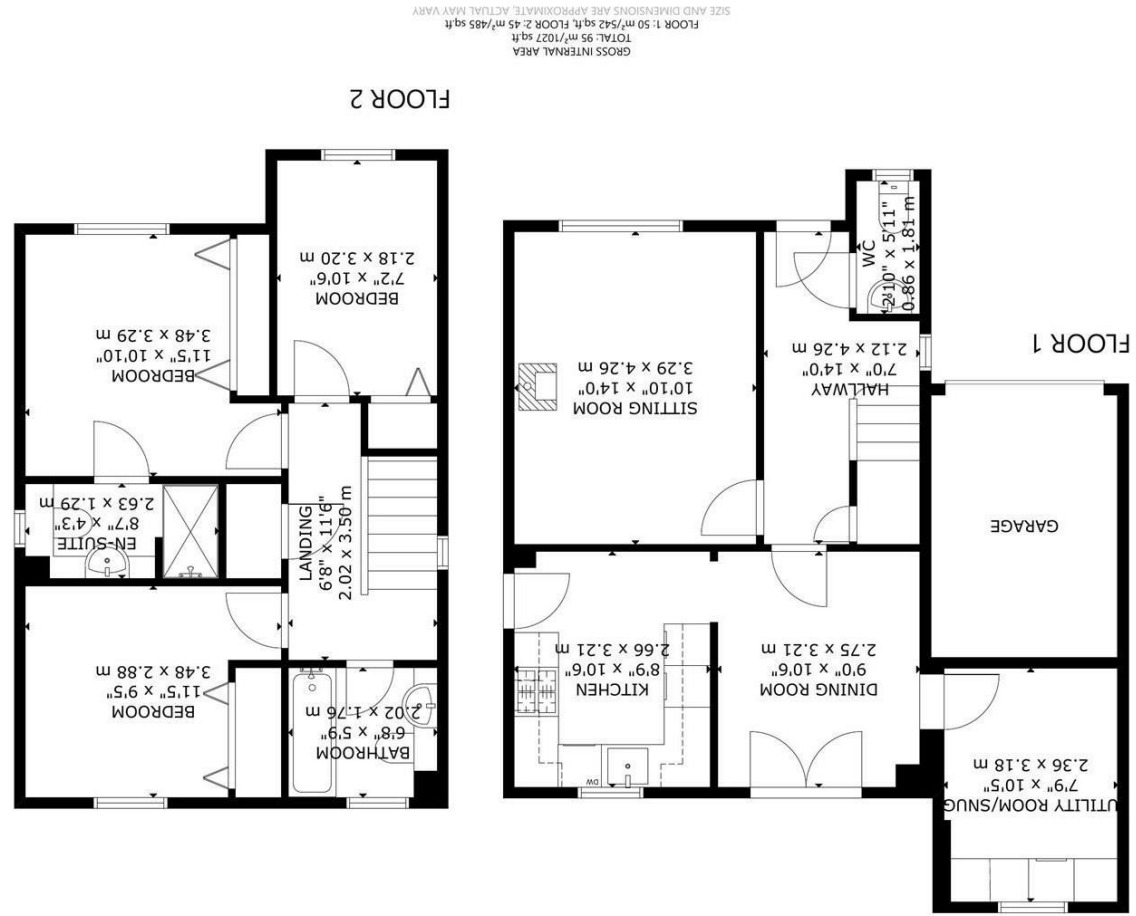
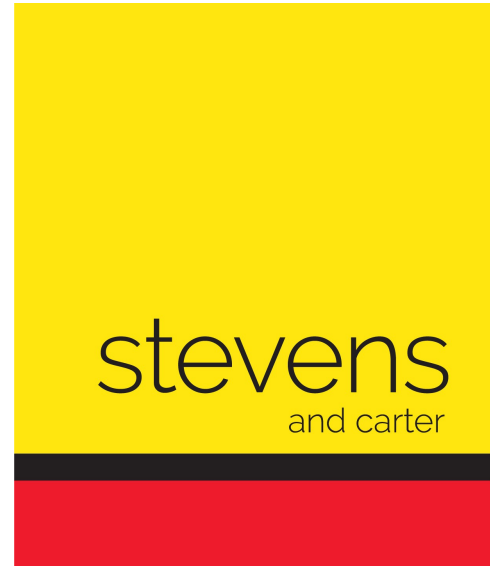


Energy Efficiency Rating	
Current	Potential
Very energy efficient - lower running costs	
A	A
B	B
C	C
D	D
E	E
F	F
G	G
Not energy efficient - higher running costs	

England & Wales
EU Directive 2002/91/EC



Cameron Close, Hailsham



- 3D Virtual Tour
- Detached House
- Popular Location
- Close Proximity To Town Centre
- Two Reception Rooms
- Kitchen
- Three Bedrooms
- Bathroom/WC & Ensuite Shower Room/WC
- Off Road Parking & Garage
- Viewing Highly Advised



Freehold

£399,950

3 BEDROOM

2 RECEPTION

2 BATHROOM

1 GARAGE

Cameron Close, Hailsham

Cameron Close, Hailsham

DESCRIPTION

3D Virtual Tour | Detached House | Two Reception Rooms | Three Bedrooms | Off Road Parking | Garage Conversion | Snug | Viewing Highly Advised | Call To Book Your Viewing |

Situated in the sought-after area of Cameron Close, Hailsham, this beautifully presented detached house offers a perfect blend of comfort and convenience. With three well-proportioned bedrooms, including a primary bedroom complete with an ensuite shower room, this home is ideal for families or those seeking extra space.

Upon entering, you are greeted by a spacious lounge that invites relaxation, complemented by a separate dining room perfect for entertaining guests. The well-appointed kitchen, along with a utility room that doubles as a snug, ensures that all your culinary needs are met with ease. The property is presented to a high standard throughout, making it ready for you to move in without delay.

Outside, this home boasts off-road parking for up to three vehicles, along with a garage conversion for additional living space. The garden space offers a delightful area for outdoor activities or simply enjoying the fresh air.

One of the standout features of this property is its prime location. It is within walking distance to the town centre, providing easy access to local shops, amenities, and transport links.

A 3D virtual tour is available, allowing you to explore this lovely home from the comfort of your own space. Viewing is highly advised to fully appreciate all that this property has to offer. Don't miss the opportunity to make this lovely house your new home.



Cameron Close, Hailsham

Entrance Hall 4.27m x 2.13m (14'0 x 7'0)

Lounge 4.27m x 3.30m (14'0 x 10'10)

Kitchen 3.20m x 2.67m (10'6 x 8'9)

Dining Room 3.20m x 2.74m (10'6 x 9'0)

Utility Room/Snug 3.18m x 2.36m (10'5 x 7'9)

Ground Floor WC 1.80m x 0.86m (5'11 x 2'10)

First Floor Landing 3.51m x 2.03m (11'6 x 6'8)

Bedroom One 3.48m x 3.30m (11'5 x 10'10)

Ensuite Shower Room/WC 2.62m x 1.30m (8'7 x 4'3)

Bedroom Two 3.48m x 2.87m (11'5 x 9'5)

Bedroom Three 3.20m x 2.18m (10'6 x 7'2)

Bathroom/WC 2.03m x 1.75m (6'8 x 5'9)

Off Road Parking

Garage

Front & Rear Gardens