



Five-Bedroom Semi-Detached Family Home Cheslyn Hay, Staffordshire An extended and versatile three-storey semi-detached home, ideally located in a sought-after area of Cheslyn Hay, within the catchment for Cheslyn Hay Academy. Offering generous living space throughout, this property is perfectly suited to modern family life.

The ground floor features a bright through lounge/diner with a large front window, feature fireplace, and French doors opening onto the rear garden, creating an ideal space for both everyday living and entertaining. The fitted kitchen provides ample storage and workspace, with direct access outside.

To the first floor are three well-proportioned bedrooms and a modern shower room.

The second floor conversion adds two further bedrooms, offering excellent flexibility for family use, guests, or home working.

The property benefits from a driveway and garage, along with a well-kept front garden. To the rear is a generous enclosed garden, mainly laid to lawn with a patio area and useful outbuildings—ideal for outdoor enjoyment.

Situated close to local amenities and transport links, and within the catchment area for Cheslyn Hay Academy, this home is perfectly positioned for families. A spacious and adaptable family home—early viewing is highly recommended.

Identity Verification Fee - We are required by law to conduct anti-money laundering checks on all those buying a property as part of our due diligence. As agents acting on behalf of the seller, we are required to verify the identity of all purchasers once an offer has been accepted, subject to contract. The initial checks are carried out on our behalf by Lifetime Legal . A non-refundable administration fee of £40 + VAT (£48 including VAT) applies which covers the cost of obtaining relevant data and any manual checks and monitoring which might be required. This fee will need to be paid by you in advance of us issuing a memorandum of sale, directly to Lifetime Legal, and is non-refundable.



**PAUL
CARR**
Estate Agents
Sales & Lettings

Lounge 3.61m (11'10") x 3.51m (11'6")

Dining Room 2.97m (9'9") x 2.72m (8'11")

Kitchen 3.25m (10'8") max x 2.67m (8'9")

Bedroom 3 2.11m (6'11") x 2.00m (6'7") plus 3.06m (10')
x 3.06m (10')

Bedroom 2 3.51m (11'6") x 2.97m (9'9") plus 1.84m (6') x
1.84m (6')

Bedroom 1 3.61m (11'10") x 2.54m (8'4") plus 0.86m
(2'10") x 0.86m (2'10")

Bedroom 5 4.73m (15'6") x 2.49m (8'2") max plus 0.50m
(1'8") x 0.50m (1'8")

Bedroom 4 3.53m (11'7") x 2.44m (8') plus 0.50m (1'8") x
0.50m (1'8")

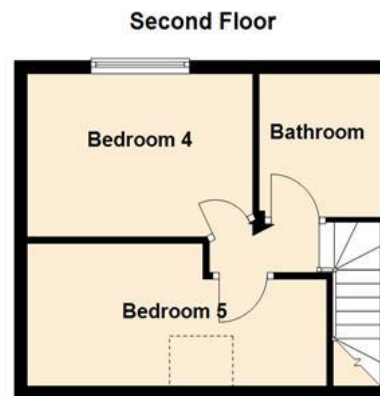
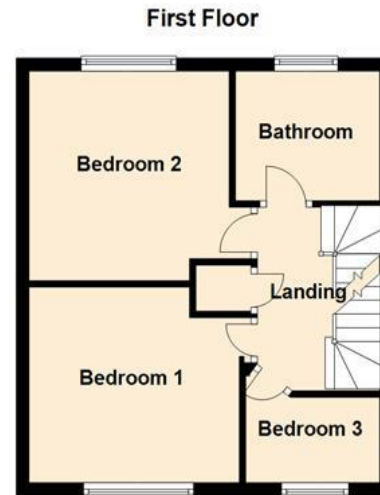


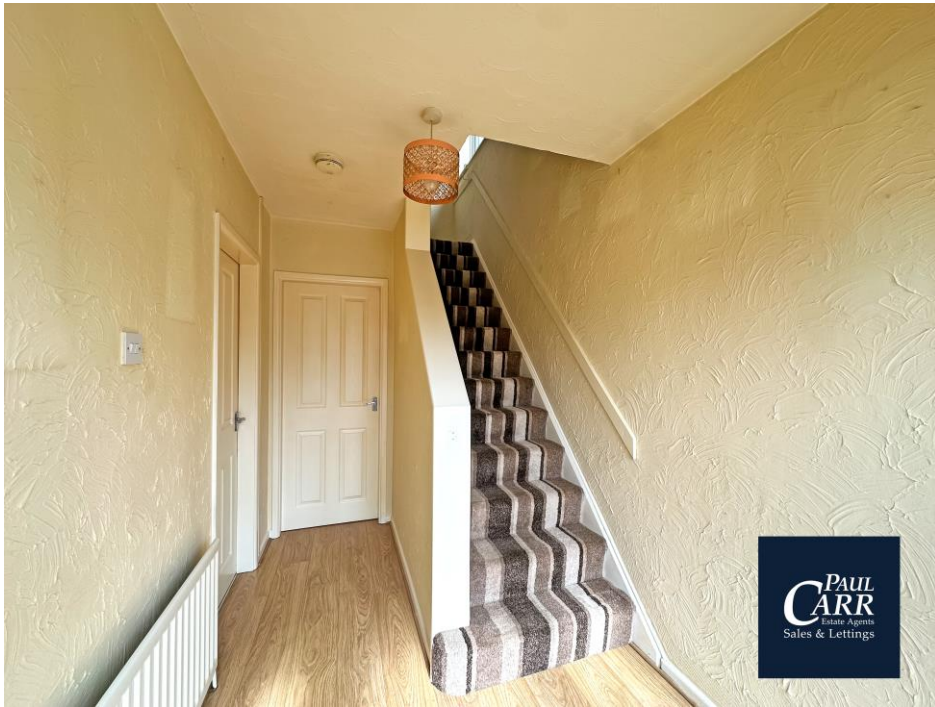


Floor Plan

This floor plan is not drawn to scale and is for illustration purposes only

Energy Performance Rating





PAUL CARR
Estate Agents
Sales & Lettings



PAUL CARR
Estate Agents
Sales & Lettings



PAUL CARR
Estate Agents
Sales & Lettings



PAUL CARR
Estate Agents
Sales & Lettings



Agent's Note:

Every care has been taken with the preparation of these Sales Particulars but they are for general guidance only and complete accuracy cannot be guaranteed. If there is any point which is of particular importance, professional verification should be sought. The mention of any fixtures, fittings and/or appliances does not imply they are in full efficient working order as they have not been tested. All dimensions are approximate. Photographs are reproduced for general information and it cannot be inferred that any item shown is included in the sale. These Sales Particulars do not constitute a contract or part of a contract. Came on the market:

Identity Verification Fee - We are required by law to conduct anti-money laundering checks on all those buying a property as part of our due diligence. As agents acting on behalf of the seller, we are required to verify the identity of all purchasers once an offer has been accepted, subject to contract. The initial checks are carried out on our behalf by Lifetime Legal. A non-refundable administration fee of £40 + VAT (£48 including VAT) applies which covers the cost of obtaining relevant data and any manual checks and monitoring which might be required. This fee will need to be paid by you in advance of us issuing a memorandum of sale, directly to Lifetime Legal, and is non-refundable.

www.paulcarrestateagents.co.uk

