



The Lodge, The Plain, Epping
Guide Price £330,000

 2  1  1  D

MILLERS
ESTATE AGENTS

*** TWO BEDROOMS * SHARE OF FREEHOLD *
WELL PRESENTED * GARAGE EN-BLOC *
OPPOSITE EPPING FOREST * GROUND FLOOR
FLAT * CHAIN FREE PURCHASE * RECENT
REFURBISHMENT ***

This recently refurbished ground floor apartment features two bedrooms and includes a garage, as well as doors that lead to the communal gardens and a share of the freehold interest. It is located on The Plain, at the edge of Epping Town, adjacent to parts of Epping Forest. This scenic area is ideal for outdoor recreation and is within walking distance of Epping High Street.

Upon entering, you will find an inner hallway that leads to a combined lounge and dining room, which boasts wooden flooring and French doors that open to the garden area. The fully fitted and refurbished kitchen includes high-gloss wall and base units, worktops, and a range-style cooker. There are two double bedrooms and a newly fitted three-piece bathroom suite featuring white sanitary ware. The exterior includes communal gardens, car parking, and a block of garages. The property benefits from double-glazed windows and gas heating via radiators, and offers a share of the freehold. This is an excellent opportunity for first-time buyers or landlords. An internal viewing is highly recommended.

The Plain is within walking distance of High Street, which offers a variety of shops, bars, cafes, and restaurants. It is also conveniently located near Stonards Hill Recreational Ground and parts of Epping Forest. Epping Town provides excellent local schooling, including Epping St. John's (ESJ), Epping Primary School, Ivy Chimneys, and Coopersale Hall School. Additionally, Epping has a Tube Station on the Central Line for easy access to London, as well as great transport links to the M25 at Waltham Abbey, the M11 at Hastingwood, and the A414 to Chelmsford.





ACCOMMODATION

Living Room

12'2" x 18'1" (3.71m x 5.51m)

Bathroom

8'6" x 5'7" (2.59m x 1.70m)

Kitchen

8'10" x 8'6" (2.70m x 2.59m)

Bedroom One

9'6" x 13'9" (2.90m x 4.19m)

Bedroom Two

7'7" x 10'2" (2.31m x 3.10m)

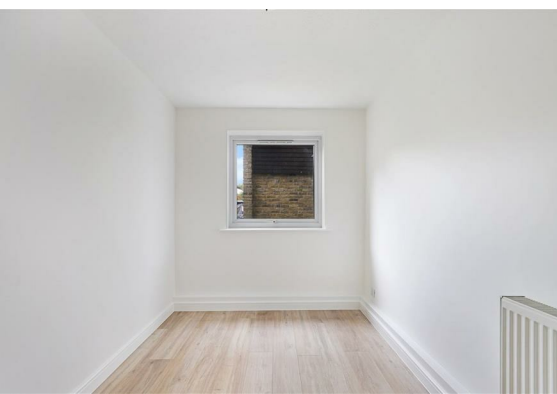
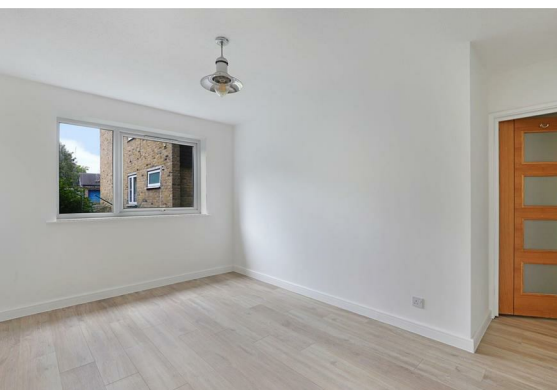
EXTERNAL

Communal Gardens

101'0" x 81'4" (30.8m x 24.8m)

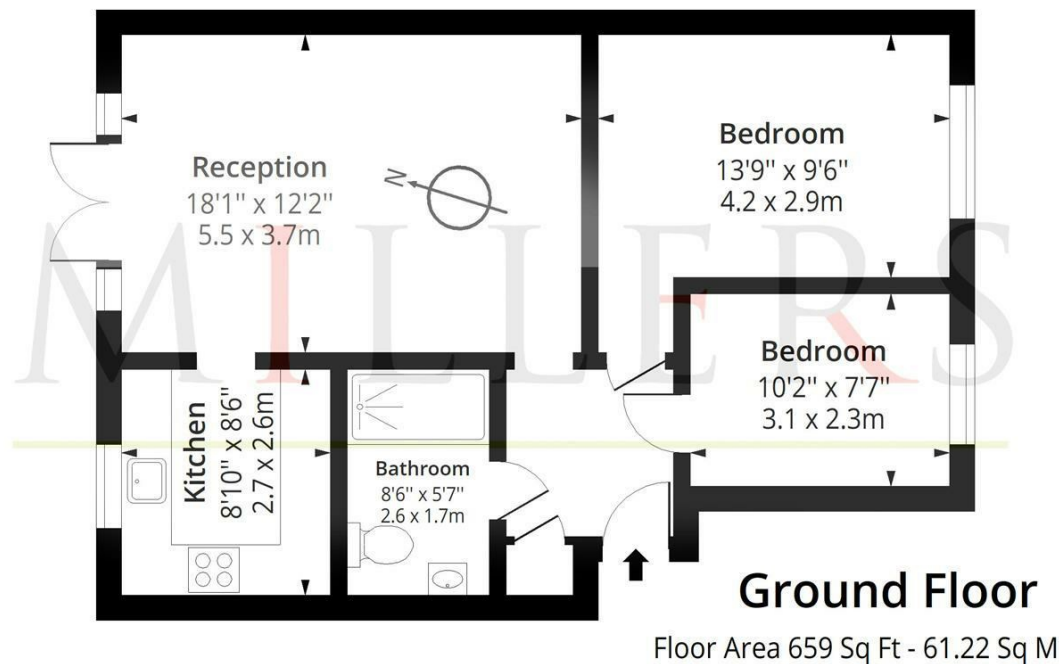
Garage En-Bloc

17'3" x 7'7" (5.26m x 2.33m)



The Lodge, CM16

Approx. Gross Internal Area 659 Sq Ft - 61.22 Sq M



Measured according to RICS IPMS2. Floor plan is for illustrative purposes only and is not to scale. Every attempt has been made to ensure the accuracy of the floor plan shown, however all measurements, fixtures, fittings and data shown are an approximate interpretation for illustrative purposes only. 1 sq m = 10.76 sq feet.

Date: 29/9/2025



Viewing

Please contact our Millers Office on 01992 560555
if you wish to arrange a viewing appointment for this property or require further information.

These particulars, whilst believed to be accurate are set out as a general outline only for guidance and do not constitute any part of an offer or contract. Intending purchasers should not rely on them as statements of representation of fact, but must satisfy themselves by inspection or otherwise as to their accuracy. No person in this firm's employment has the authority to make or give any representation or warranty in respect of the property.

Energy Efficiency Rating			Environmental Impact (CO ₂) Rating		
	Current	Potential		Current	Potential
Very energy efficient - lower running costs			Very environmentally friendly - lower CO ₂ emissions		
(92 plus) A			(92 plus) A		
(81-91) B			(81-91) B		
(69-80) C			(69-80) C		
(55-68) D			(55-68) D		
(39-54) E			(39-54) E		
(21-38) F			(21-38) F		
(1-20) G			(1-20) G		
Not energy efficient - higher running costs			Not environmentally friendly - higher CO ₂ emissions		
England & Wales	EU Directive 2002/91/EC		England & Wales	EU Directive 2002/91/EC	

229 High Street, Epping, Essex, CM16 4BP

Tel: 01992 560555 | Email: sales@millersepping.co.uk

www.millersepping.co.uk