



SIMMONDS HOUSE, TW8

£285,000

One bedroom
Secure gated parking
Private balcony
Residence gym
Lift access
Energy rating: c

@marshandparsons
marshandparsons.co.uk

MARSH &
PARSONS



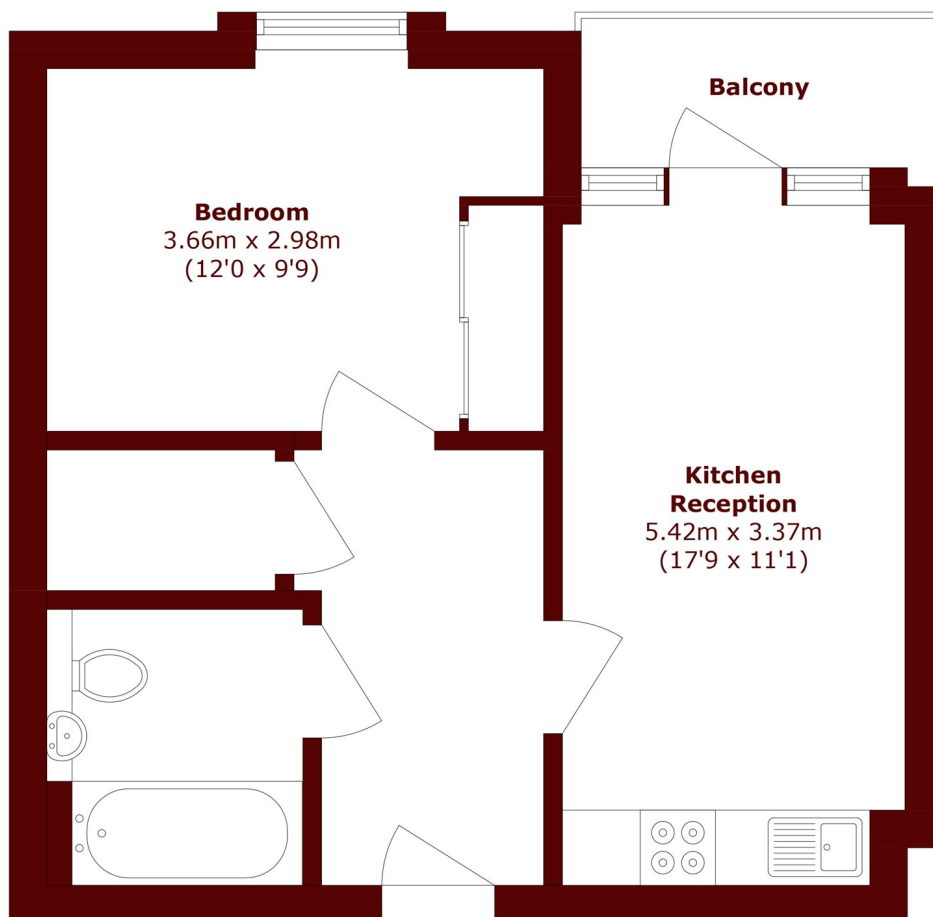
ABOUT THE PROPERTY

This stylish one bedroom apartment, set on the first floor, offers modern living with a host of desirable features. Enjoy the convenience of secure gated parking, a west-facing private balcony, lift access, a residents gym, and the reassurance of a building warranty.

This apartment sits in the popular Great West Quarter in Brentford, with plenty of transport options close by, Brentford Station for National Rail, Gunnersbury for the District Line and London Overground, and South Ealing on the Piccadilly Line. Brentford High Street is only a short walk away, providing everyday amenities, while Chiswick High Road lies just 1.6 miles from the property, where you'll find an impressive selection of restaurants.



STEP INSIDE SIMMONDS HOUSE



Total area (approx.): 43.0 sq. m (462.8 sq. ft)

Balcony area (approx.): 3.9 sq. m (31.2 sq. ft)

Chiswick
020 8994 2556

Energy Rating: C We aim to make our particulars both accurate and reliable. However, they are not guaranteed; nor do they form part of an offer or contract. If you require clarification on any points then please contact us, especially if you're traveling some distance to view. Please note that appliances and heating systems have not been tested and therefore no warranties can be given as to their good working order

MARSH &
PARSONS