



Guide Price
£310,000

Leasehold

2x  2x  1x 

**James Smith Court,
Dartford, Kent, DA1**

OVER 60?

Secure this property
for up to **59% less!**

Wards
Helping you move forwards



Main features

- Delightful fourth floor flat with balcony
- Secure underground allocated parking space
- High specification kitchen with built in appliances
- Immaculately presented throughout
- Ideal for commuters as the station is close by

Accommodation

Hallway

Lounge/Kitchen: 22'5 x 15'1 (6.84m x 4.60m)

Balcony: 5'11 x 5'1 (1.80m x 1.55m)

Bedroom 1: 15'3 x 11'11 (4.65m x 3.63m)

En-suite Shower Room

Bedroom 2: 11'3 x 10'1 (3.43m x 3.08m)

Bathroom

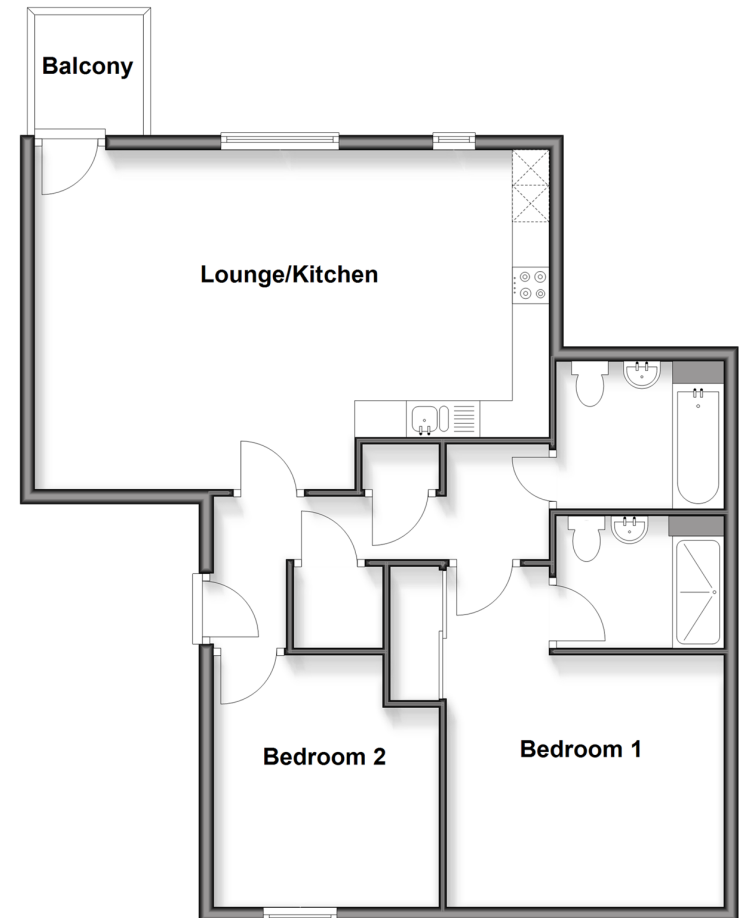
OUTSIDE

Allocated Parking Space

Communal Garden

Fourth Floor

Approx. 74.0 sq. metres (796.8 sq. feet)



Call Dartford - 01322 288211 ■ wardsof Kent.co.uk

- Legal advice should be taken to verify fixtures/fittings, planning, alterations and/or lease details
- Appliances & services are untested, dimensions are approximate and floor plans are not to scale
- Through a Homewise Home For Life Plan people aged 60+ can secure this property for up to 59% less, by purchasing a Lifetime Lease



10546284/20260225/YD/JH