

TO LET



Clayworks, Hanley

1 Bedroom, 1 Bathroom, Apartment

£950 pcm



Clayworks, Hanley

1 Bedroom, 1 Bathroom

£950 pcm

STUNNING FURNISHED APARTMENT. martin and co offer for rent this stunning 1 bedroom furnished flat located in the heart of the cultural quarter of Hanley and within the prestigious Clayworks development which offer a daytime residential service manager. The apartment has access to a private garden, sun terrace and a communal multi function room and benefits from lifts to all floors. The apartment itself comprises a large open plan lounge and kitchen, 1 double bedroom and a bathroom. Zero deposit scheme available.

Date available: 20th June 2026

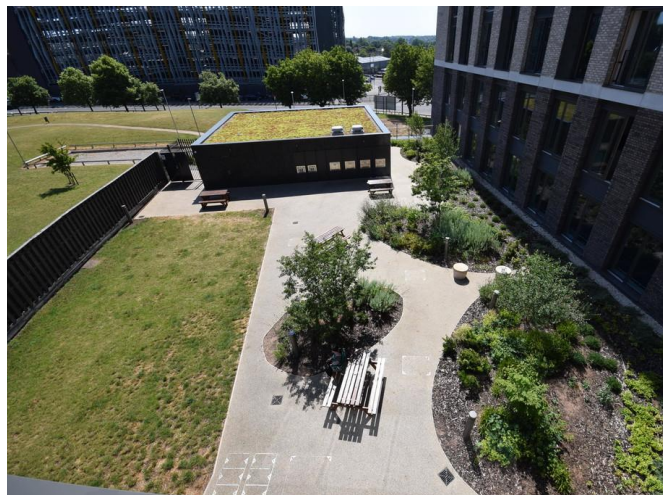
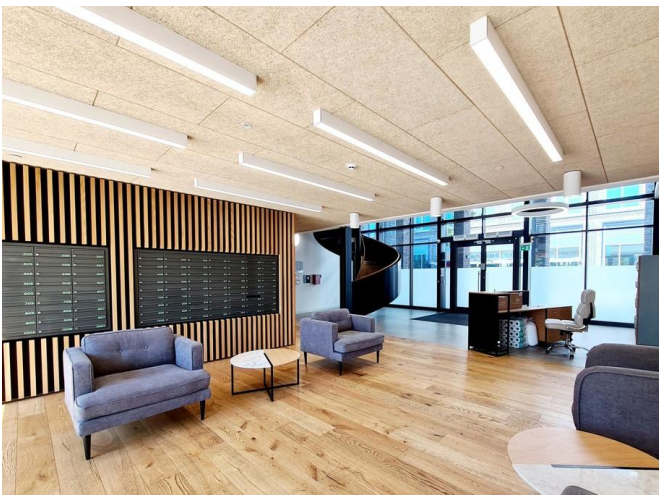
Deposit: £1,096

Furnished

Council Tax band: A

- Highly sought after development
- 1 bedroom furnished apartment
- Open plan lounge and kitchen
- Bathroom
- Lift to all floors
- Council tax band A
- Private garden and sun terrace







Energy Efficiency Rating		
	Current	Potential
<i>Very energy efficient - lower running costs</i>		
(92-100) A		
(81-91) B	85	85
(69-80) C		
(55-68) D		



Martin & Co Stoke on Trent

12 Albion Street • Stoke-On-Trent • ST1 1QH

T: 01782 262880 • E: stokeontrent@martinco.com <http://www.martinco.com>

01782 262880



Accuracy: References to the Tenure of a Property are based on information supplied by the Seller. The Agent has not had sight of the title documents. A Buyer is advised to obtain verification from their Solicitor. Items shown in photographs including but not limited to carpets, fixtures and fittings are not included unless specifically mentioned within the sales particulars. They may however be available by separate negotiation. Buyers must check the availability of any property and make an appointment to view before embarking on any journey to see a property. No person in the employment of the agent has any authority to make any representation about the property, and accordingly any information given is entirely without responsibility on the part of the agents, sellers(s) or lessors(s). Any property particulars are not an offer or contract, nor for part of one. **Sonic / Laser Tape:** Measurements taken using a sonic / Laser tape measure may be subject to a small margin of error. **All Measurements:** All Measurements are Approximate. **Services Not tested:** The Agent has not tested any apparatus, equipment, fixtures and fittings or services and so cannot verify that they are in working order or fit for the purpose. A Buyer is advised to obtain verification from their Solicitor or Surveyor.

