

Your Logo

Byron Road, Portsmouth

Offers In Region Of £200,000

🛏️ 2 🚿 2 🚗 1



Attention landlords and portfolio investors: This is a premier opportunity to acquire a high-performing residential asset with a 7.5% gross yield. Sold with a reliable, long-term tenant in situ, this property offers immediate cash flow from day one, bypassing the costs and risks associated with void periods, marketing, and tenant sourcing.

The Financials

Annual Income: £15,000

Gross Yield: 7.5%

Purchase Price: £200,000

Key Investment Features

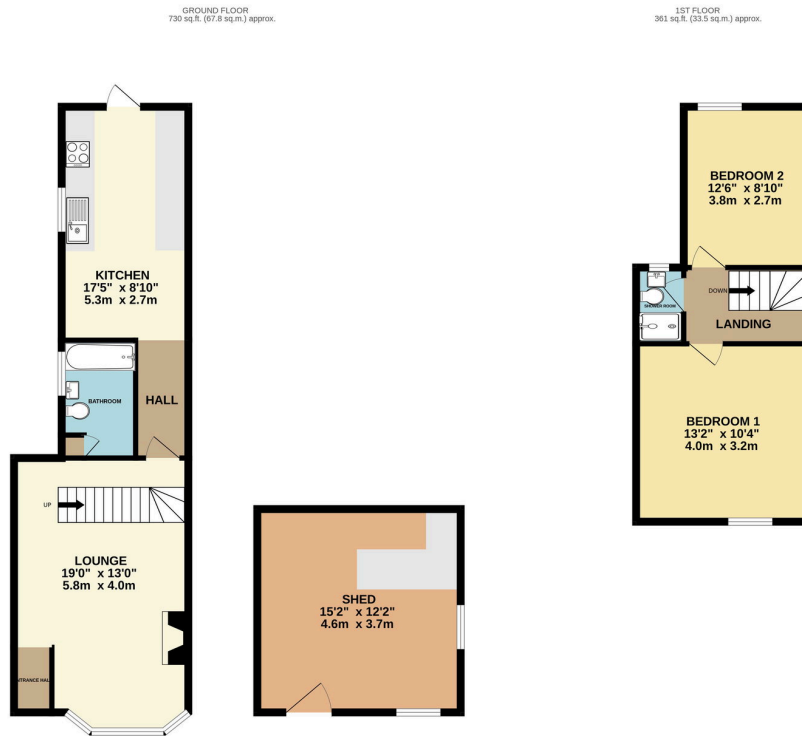
Instant ROI: Zero downtime. Start collecting rent the moment completion hits.

Proven Tenancy: Benefit from an established tenant with a track record of consistent payments and property care.

Market Position: Priced competitively to ensure strong capital growth potential alongside high monthly returns.

Your Logo

- Investors/Landlords Only
- Annual Income - £15,000pa
- Two Bedroom Terraced House
- Outside office/bar/study
- Long Term Tenant
- Rental Income - £1250.00pcm
- Gross Yield - 7.5%
- Separate Bathroom and shower room
- Low Maintenance Garden
- Fully Managed



TOTAL FLOOR AREA: 1091 sq.ft. (101.3 sq.m.) approx.
While every attempt has been made to ensure the accuracy of the floorplan contained here, measurements of doors, windows, doors and any other items are approximate and no responsibility is taken for any error, omission or mis-statement. This plan is for illustrative purposes only and should be used as such by any prospective purchaser. The services, systems and appliances shown have not been tested and no guarantee as to their operability or efficiency can be given.
Made with Metropix ©2025.