



Partisan Green,WA5 7AA

£434,950

4 3 2



Executive 4-Bedroom Detached Home – Kingswood Estate

Located on the highly sought-after Kingswood Estate, this impressive four-bedroom detached home with integrated garage offers stylish and spacious family living in a convenient location close to local shops, well-regarded schools, motorway links, and public transport routes.

The ground floor features a welcoming entrance hall, a bright lounge with a feature bay window, a modern downstairs W/C, and a stunning open-plan kitchen and dining area—perfect for family life and entertaining.

Upstairs, a generous landing leads to four well-proportioned bedrooms. The principal bedroom benefits from a private en-suite, while bedrooms two and three share a contemporary Jack and Jill shower room. A fourth bedroom completes the accommodation on this floor.

Outside, the property enjoys a large, private rear garden with a patio area ideal for outdoor dining and relaxation. To the front, there is driveway parking for two cars and a neat garden, along with access to the integrated garage.

This superb family home offers a perfect blend of comfort, space, and modern living in a highly desirable location—early viewing is strongly recommended.

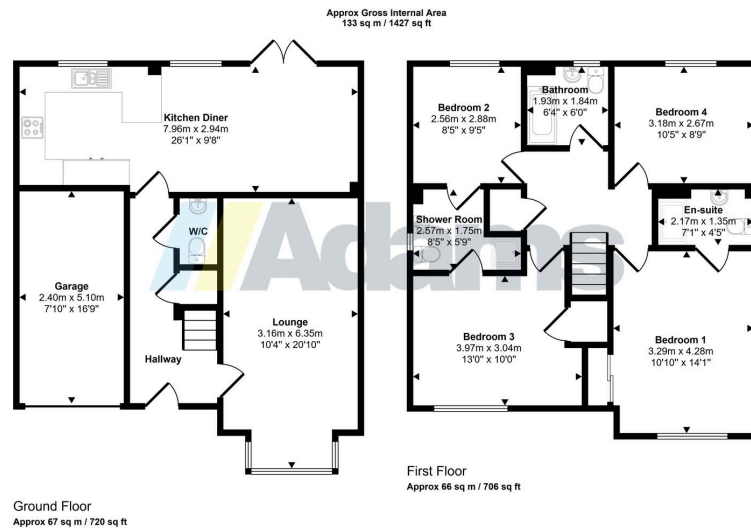
Viewing

By prior appointment through our Stockton Heath office on 01925-398343.

Note

All measurements are approximate. No appliances or central heating systems referred to within these particulars have been tested and therefore their working order cannot be verified. Floor plans are for





- Executive 4-bedroom detached family home
- Spacious open-plan kitchen/diner
- Principal bedroom with en-suite shower room
- Downstairs W/C and welcoming entrance hall
- Driveway parking for two vehicles plus integrated garage
- Highly sought-after location
- Bright lounge with feature bay window
- Bedrooms 2 & 3 with shared Jack & Jill shower room
- Large private rear garden with patio area
- Close to local shops, schools, public transport and motorway links

