



Wren Avenue, NW2

£1,299,950

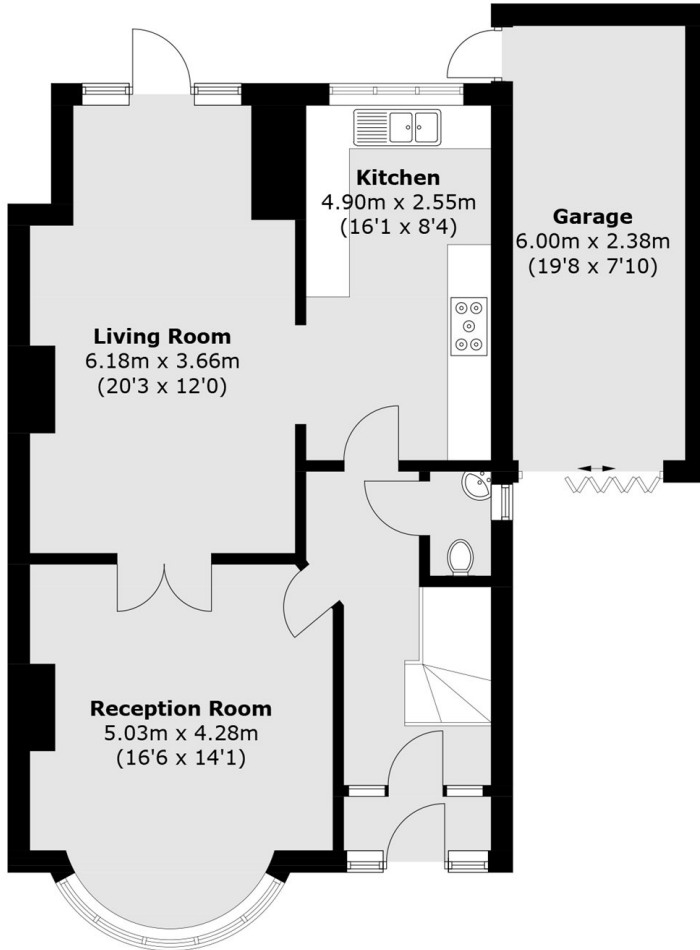
A semi detached four bedroom house offering over 1380 sq ft of space with potential to increase this substantially with loft, side and back extensions. The property benefits from a large private garden, driveway and is being offered chain free.

Wren Avenue is conveniently located close to the ever popular Gladstone Park, with Willesden Green and Dollis Hill stations (Jubilee line) alongside bus routes being within walking distance and easy connection to the A1, A406 and M1.

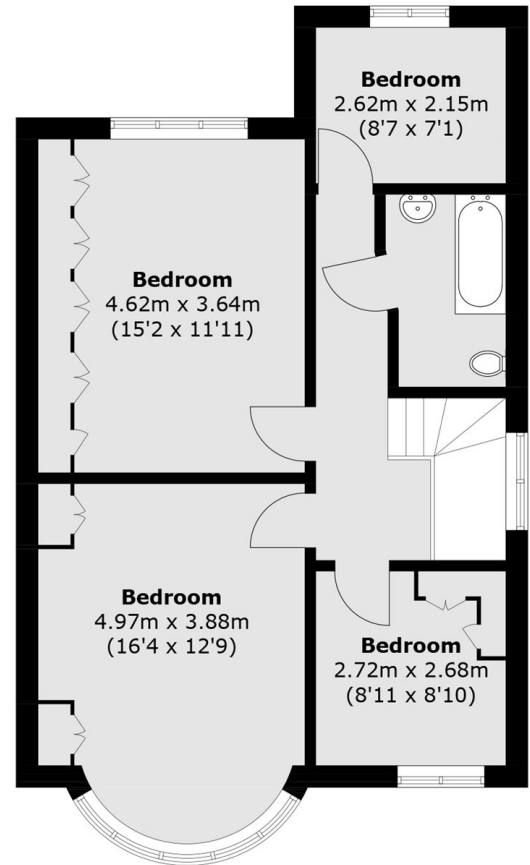
Features

- Four Bedrooms
- Potential For Extensions
- Large Private Garden
- Garage
- Driveway
- Chain Free

Wren Avenue,
London, NW2



Ground Floor



First Floor

Approx Internal Area: 129.0 sq. m (1,388.5 sq. ft)
Garage: 14.7 sq. m (158.2 sq. ft)
Total: 143.7 sq. m (1,546.7 sq. ft)