

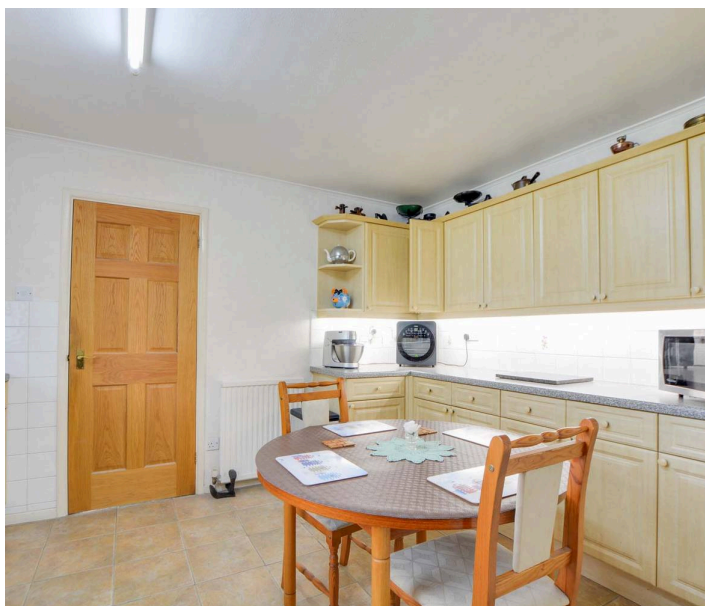


18 Canvey Close, Wigston

In excess of £400,000 Freehold

A well-proportioned four-bedroom detached home set within a cul-de-sac in Wigston, offering a spacious lounge, dining kitchen, utility room, double garage and a well-maintained rear garden.





Double Glazed Porch

5' 7" x 4' 7" (1.70m x 1.40m)

Providing access to the reception room.

Reception Room

21' 0" x 15' 1" (6.40m x 4.61m)

Light and airy with double-glazed window to front elevation, double-glazed patio door to rear garden, chimney breast with living flame gas fire (marble surround and hearth), coving to ceiling, television point, radiator, and stairs to first floor.

Dining Kitchen

12' 3" x 12' 3" (3.74m x 3.73m)

double-glazed window to rear elevation, ceramic tiled flooring, range of base and wall units, granite-effect laminate work surfaces, sink/drainер with mixer tap, integrated four-ring gas hob and oven with extractor over, space for fridge-freezer, and radiator.

Utility Area

7' 11" x 5' 1" (2.41m x 1.55m)

Double-glazed window to rear elevation, double-glazed door to rear garden, laminate work surfaces, built-in cupboard, plumbing for washing machine, space for tumble dryer, space for fridge, and access to the double garage and downstairs WC.

Downstairs WC

Double-glazed window and low-level WC.

First Floor Landing



First Floor Landing

Bedroom One

12' 2" x 10' 2" (3.70m x 3.10m)

Double-glazed window to front elevation, built-in wardrobes, coving to ceiling, and radiator.

Bedroom Two

10' 2" x 9' 2" (3.10m x 2.80m)

Double-glazed window to the side elevation and radiator.

Bedroom Three

9' 1" x 8' 6" (2.77m x 2.60m)

Double-glazed window to the rear elevation and radiator

Bedroom Four

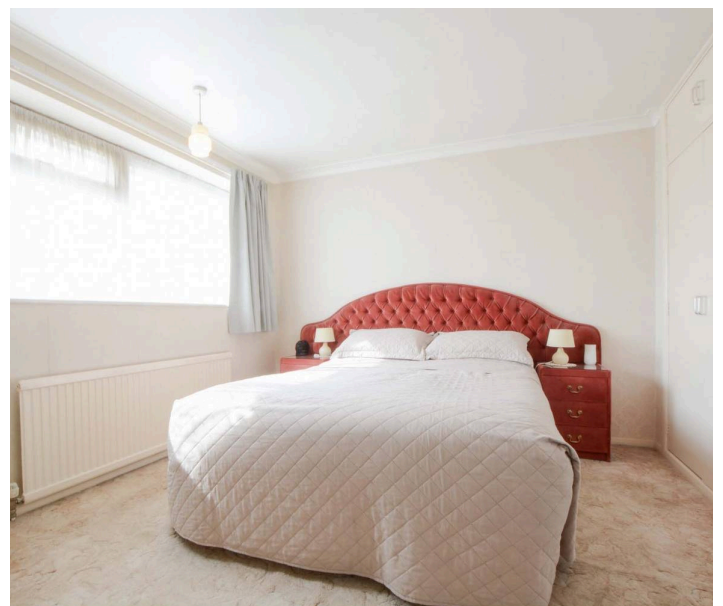
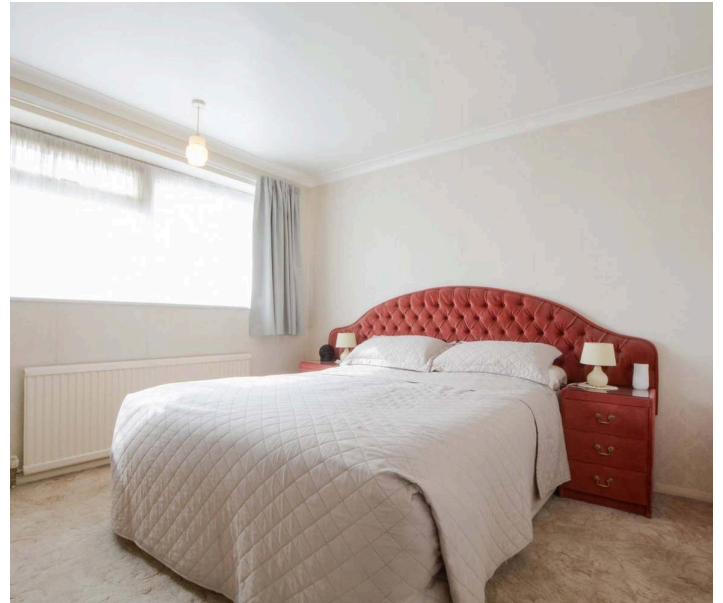
10' 6" x 6' 2" (3.20m x 1.87m)

Double-glazed window to the rear elevation and radiator

Bathroom

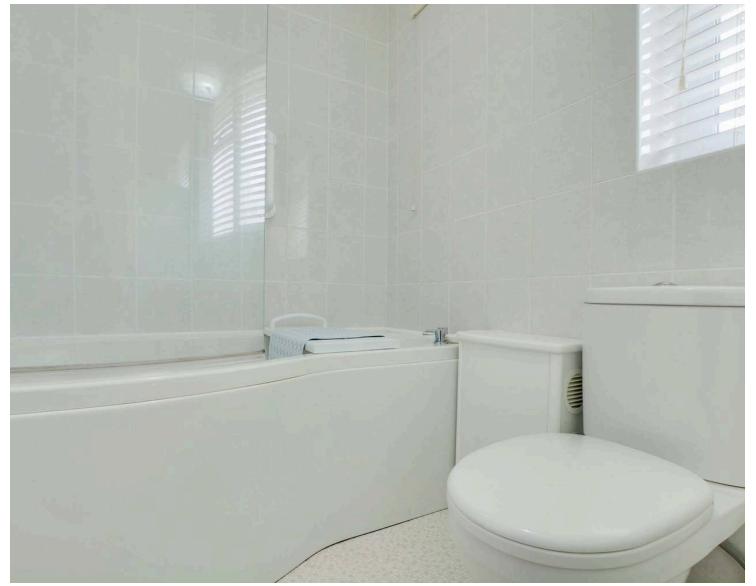
8' 9" x 5' 6" (2.66m x 1.67m)

Double-glazed window to rear elevation, bath with shower over and screen, low-level WC, wash hand basin, fully tiled walls, and radiator.









Front Garden

With a Lawn area.

Rear Garden

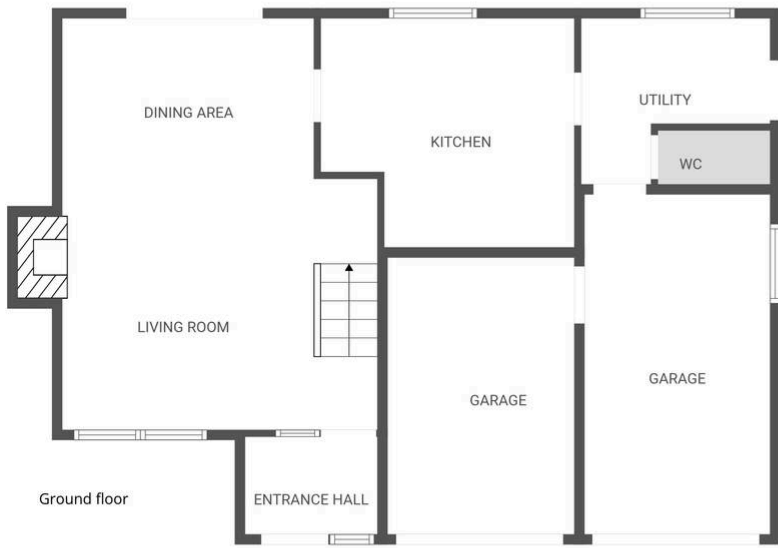
With a patio, well-maintained lawn, mature flower beds, fenced perimeter borders, and a greenhouse

Driveway

Parking for two cars.

Double Garage

Double garage (half is integral, the other part is outside).



FLOOR PLAN CREATED BY CUBICASA APP. MEASUREMENTS DEEMED HIGHLY RELIABLE BUT NOT GUARANTEED.

We'll keep you moving...





The property is perfectly situated for everyday amenities within Wigston Magna, including Sainsburys and Aldi supermarkets and local schooling. Regular bus routes running to and from Leicester City Centre and Knighton Park are also within reach.

Council Tax band: D

Tenure: Freehold

EPC Energy Efficiency Rating:

EPC Environmental Impact Rating:

We'll keep you moving...



We must inform all prospective purchasers that the measurements are taken by an electronic take and are provided as a guide only and they should not be used as accurate measurements. We have not tested any mains services, gas or electric appliances, or fixtures and fittings mentioned in these details, therefore, prospective purchasers should satisfy themselves before committing to purchase. Intending purchasers must satisfy themselves by inspection or otherwise to the correctness of the statements contained in these particulars. Knightsbridge Estate Agents (nor any person in their employment) has any authority to make any representation or warranty in relation to the property. The floor plans are not to scale, and are intended for use as a guide to the layout of the property only. They should not be used for any other purpose. We are required by law to conduct anti-money laundering checks on all those selling or buying a property. Whilst we retain responsibility for ensuring checks and any ongoing monitoring are carried out correctly, the initial checks are carried out on our behalf by Lifetime Legal who will contact you once you have agreed to instruct us in your sale or had an offer accepted on a property you wish to buy. The cost of these checks is £60 (incl. VAT), which covers the cost of obtaining relevant data and any manual checks and monitoring which might be required. This fee will need to be paid by you in advance of us publishing your property (in the case of a vendor) or issuing a memorandum of sale (in the case of a buyer), directly to Lifetime Legal, and is non-refundable. We will receive some of the fee taken by Lifetime Legal to compensate for its role in the provision of these checks.