



City Road, London EC1V

Price £745 per week - Furnished







Description

A 1 bedroom apartment in the sought after Atlas Building, Old Street. EC1

This luxury 1 bedroom apartment boasts approximately 544 sq ft of living space. The apartment is unfurnished and comprises a large open plan reception with fully fitted kitchen, large West facing balcony with stunning views towards the City skyline, bedroom with large fitted wardrobe, luxury bathroom with Porcelain finish and solid wood flooring.

The development offers top of the range amenities which includes pool, spa, gymnasium, private cinema room, resident's only business lounge and 24 hour concierge. Each apartment also benefits from comfort cooling / heating. The Atlas Building is next to Old Street station (0.1 mile) and a short walk to the City, Hoxton, Shoreditch and Angel.

We understand that cooling / heating is delivered via a communal system for which separate charges apply.

Council tax band: E. Rent is payable on a monthly basis and you may be required to pay more than a month's rent in advance, depending on your circumstances. You will be required to pay a 1 week holding deposit following a successful offer. Tenancies with annual rents up to £50,000 will require a 5 weeks' security deposit, while those exceeding this threshold will require a 6 weeks' deposit. Utility bills, council tax, telephone line and broadband are not included in the rent. As well as paying the rent, you may also be required to make some additional permitted payments. If your tenancy does not qualify as an AST, additional fees may apply. Please visit jll.co.uk/fees for details of fees that may be payable when renting a property. To check broadband and mobile phone coverage please visit Ofcom here ofcom.org.uk/phones-telecoms-and-internet/advice-for-consumers/advice/ofcom-checker

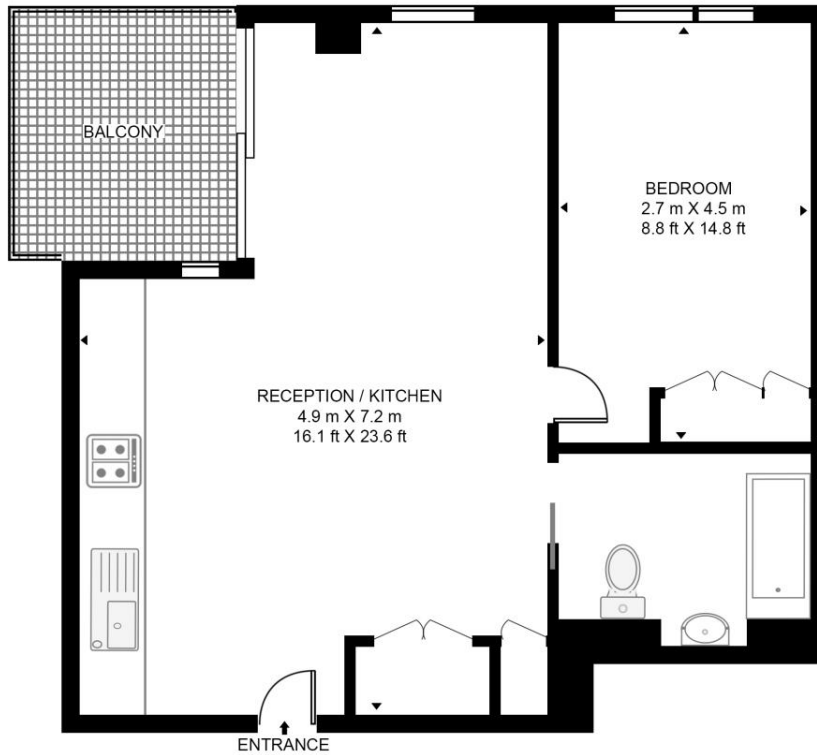
- 1 Bedroom
- 1 Bathroom
- 9th Floor
- Private balcony
- On-site leisure facilities including pool, spa and cinema
- 24 hour concierge
- 0.1 miles from Old Street Station
- Approx. 547 sq ft (50.8 sq m)
- Furnished
- EPC: B

Floorplan

547 sq ft | 51 sq m

ATLAS BUILDING, 145 CITY ROAD

APPROXIMATE GROSS INTERNAL FLOOR AREA 547 SQ.FT (50.8 SQ.M)



NINTH FLOOR

HDVA

This floor plan has been defined by the RICS Code of Measurement. This floor plan and all others are for approximate representative purposes only and upon usage is agreed to as such by the client.

WWW: hdvirtualart.com | TEL: 0203.974.1567 | EMAIL: info@hdvirtualart.com

City
25 Walbrook The Walbrook
Building,
London EC4N 8AF
+4420 7337 4000

Urban living, your way.

jll.co.uk/residential

© 2019 Jones Lang LaSalle IP, Inc. All rights reserved. All information contained herein is from sources deemed reliable; however, no representation or warranty is made to the accuracy thereof.

