



Albert Street | Amble | NE65 0LY

£240,000

A beautifully extended semi-detached home ideally situated within walking distance of Amble's thriving town centre and picturesque harbour. Combining traditional character with modern family living, the property features spacious reception rooms, an impressive open-plan dining kitchen extension, ample off-street parking, a low-maintenance garden, and a versatile timber cabin currently used as a games and hobby room. An excellent opportunity to enjoy coastal living in one of Northumberland's most popular seaside towns.

RMS | Rook
Matthews
Sayer

 X 3  X 2  X 1

**EXTENDED SEMI DETACHED
FAMILY HOME**

**SOUGHT AFTER COASTAL
LOCATION**

**TWO SEPARATE RECEPTION
ROOMS**

**REAR EXTENSION WITH DINING
KITCHEN**

USEFUL UTILITY ROOM

OFF STREET PARKING

**LOW MAINTENANCE REAR
GARDEN**

GARAGE

For any more information regarding the property please contact us today

Situated in the ever-popular harbour town of Amble on the stunning Northumberland coast, this extended semi-detached home offers spacious and versatile accommodation in a highly convenient location close to the town centre, local amenities, and waterfront attractions.

Retaining its traditional character with separate reception rooms, the property has been thoughtfully extended to the rear, creating an impressive full-width addition that provides a generous dining kitchen, utility room, and a practical ground-floor shower room – ideal for modern family living.

The home also benefits from off-street parking across the entire front of the property, offering ample space for multiple vehicles. To the rear, the low-maintenance garden provides an excellent outdoor space for relaxing and entertaining, while a substantial timber cabin offers fantastic flexibility and is currently used as a games and hobby room, making it perfect for a home office, studio, or leisure space.

Further benefits include a gas central heating system with a boiler installed in recent years, helping to provide comfort and efficiency throughout the home.

This is a wonderful opportunity to acquire a spacious family home in one of Northumberland's most sought-after coastal towns, combining traditional charm with modern practicality.

Entrance porch

Double glazed composite entrance door, UPVC double-glazed windows, tiled floor, decorative stained glass door and windows to hall

Hall

Radiator, dado rail, coving to ceiling, spindle staircase to first floor, understairs storage cupboard, doors to living room, dining room and kitchen.

Living room (front) 14' measured into alcove x 11'11 (4.27m x 3.63m)

UPVC double-glazed window, picture rail, radiator, original cornice, open fire with wood fire surround and tiled inset & hearth

Kitchen

Separated into two separate zones

Original kitchen 7'9 x 7'1 (2.36m x 2.16m)

Fitted wall and base units with solid wood worktops and tiled splashback, tiled floor, storage cupboard, coving to ceiling, door to garage, open to kitchen area.

T: 01665 510044

Branch alnwick@rmsestateagents.co.uk

RMS | Rook
Matthews
Sayer

Dining kitchen extension 20'5 x 7'3 (6.22m x 2.21m)

Fitted cabinets with solid wood countertops incorporating: 1.5 stainless steel sink, space for dual fuel range cooker, stainless steel splashback, extractor hood, wine fridge. Tiled floor, UPVC double glazed window and French doors to rear garden, coving to ceiling, ceiling downlights, open to sitting room, door to utility.

Dining room/2nd reception room space 12'1 measured into alcove x 10'8 (3.68m x 3.25m)

Ingle fireplace incorporating a multi fuel stove, Slate hearth, coving to ceiling, door to hall, open to kitchen.

Utility 8'3 x 5'6 (2.52m x 1.68m)

Fitted wall and base units incorporating: single stainless steel sink, space for washing machine, tiled splash-backs, coving to ceiling, UPVC double-glazed external door to side, door to shower room.

Shower room

Tiled double shower cubicle with mains shower and sliding glass doors, pedestal wash-hand basin, close-coupled W.C. radiator, fully tiled walls, extractor, vanity light with shaver point, UPVC double-glazed frosted window.

First floor landing

UPVC double-glazed frosted window, dado rail, loft access hatch, doors to bathroom, W.C., and bedrooms.

Bedroom one (front) 11'11 x 12' (3.63m x 3.66m)

UPVC double glazed window, radiator

Bedroom two (rear) 11'7 x 10'8 (3.53m x 3.25m)

UPVC double glazed window, radiator

Bedroom three (front) 8'2 x 8'6 maximum floor space including bulkhead over stairs. (2.48m x 2.59m)

UPVC double-glazed window, radiator.

Bathroom

Freestanding roll-top bath with hand-held mixer tap shower attachment, pedestal wash hand basin, part tiled/part wood panelled walls, radiator, UPVC double-glazed frosted window.

W.C

Close-coupled W.C, part tiled/part wood panelled walls, UPVC double-glazed frosted window

Garage 20' x 8'7 (6.30m x 2.62m)

Electric roller door, light and power sockets, central heating boiler.

Externally

Gravelled drive and garden to the front. Low maintenance rear garden with pergola, greenhouse, and timber cabin with power and lighting.

PRIMARY SERVICES SUPPLY

Electricity: Mains

Water: Mains

Sewerage: Mains

Heating: Mains Gas

Broadband: FTTC

Mobile Signal Coverage Blackspot: No

Parking: Garage & Driveway

MINING

The North East region is famous for its rich mining heritage and therefore it will be beneficial to conduct a mining search. Confirmation should be sought from a conveyancer as to its effect on the property, if any.

TENURE

Freehold – It is understood that this property is freehold, but should you decide to proceed with the purchase of this property, the Tenure must be verified by your Legal Adviser

COUNCIL TAX BAND: B**EPC RATING: TBC**

AL009601/DM/HH/03.06.2026/V.1

EPC
Coming Soon

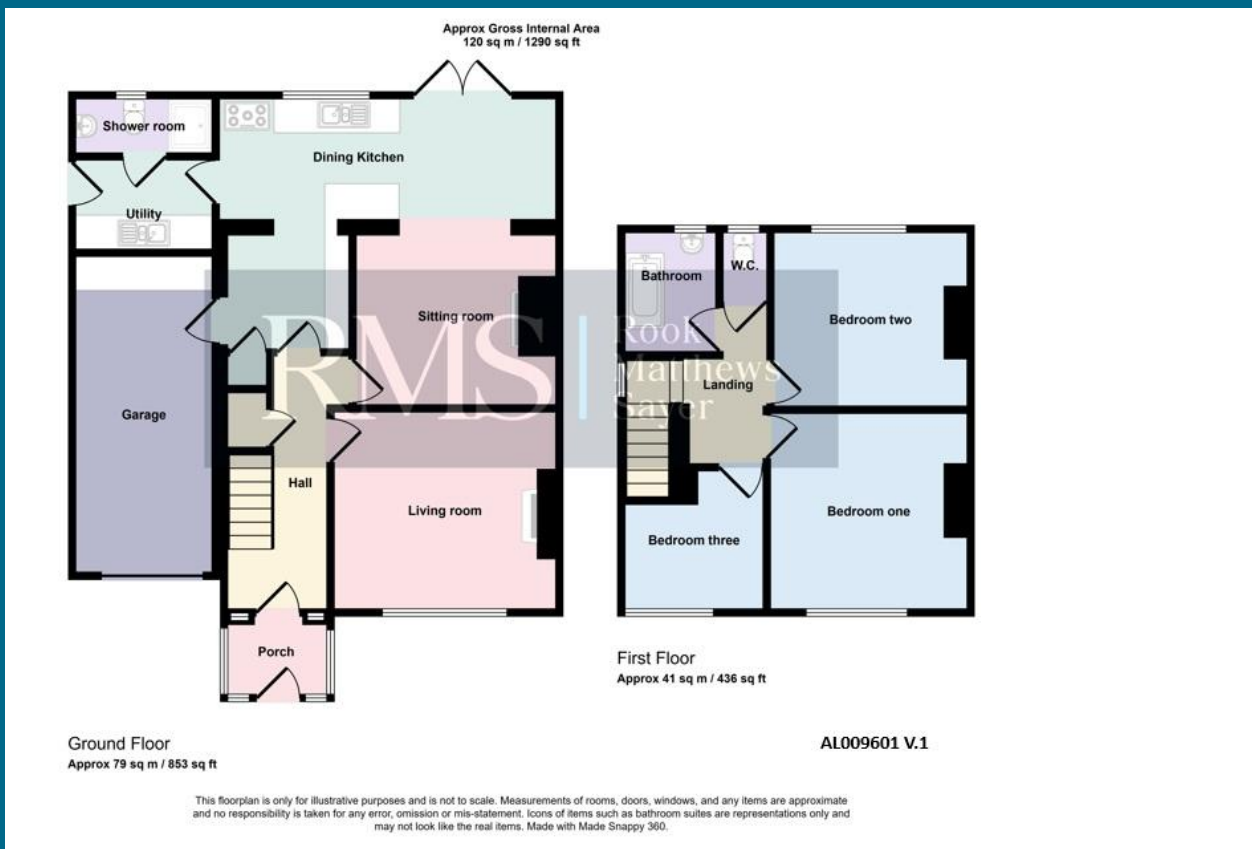
RMS | Rook
Matthews
Sayer

T: 01665 510044

Branch alnwick@rmsestateagents.co.uk

RMS | Rook
Matthews
Sayer





Money Laundering Regulations – intending purchasers will be asked to produce original identification documentation at a later stage and we would ask for your co-operation in order that there will be no delay in agreeing the sale. We will also use some of your personal data to carry out electronic identity verification. This is not a credit check and will not affect your credit score.

Important Note: Rook Matthews Sayer (RMS) for themselves and for the vendors or lessors of this property, whose agents they are, give notice that these particulars are produced in good faith, are set out as a general guide only and do not constitute part or all of an offer or contract. The measurements indicated are supplied for guidance only and as such must be considered incorrect. Potential buyers are advised to recheck the measurements before committing to any expense. RMS has not tested any apparatus, equipment, fixtures, fittings or services and it is the buyer's interests to check the working condition of any appliances. RMS has not sought to verify the legal title of the property and the buyers must obtain verification from their solicitor. No persons in the employment of RMS has any authority to make or give any representation or warranty whatever in relation to this property.



T: 01665 510044

Branch alnwick@rmsestateagents.co.uk

RMS | Rook Matthews Sayer