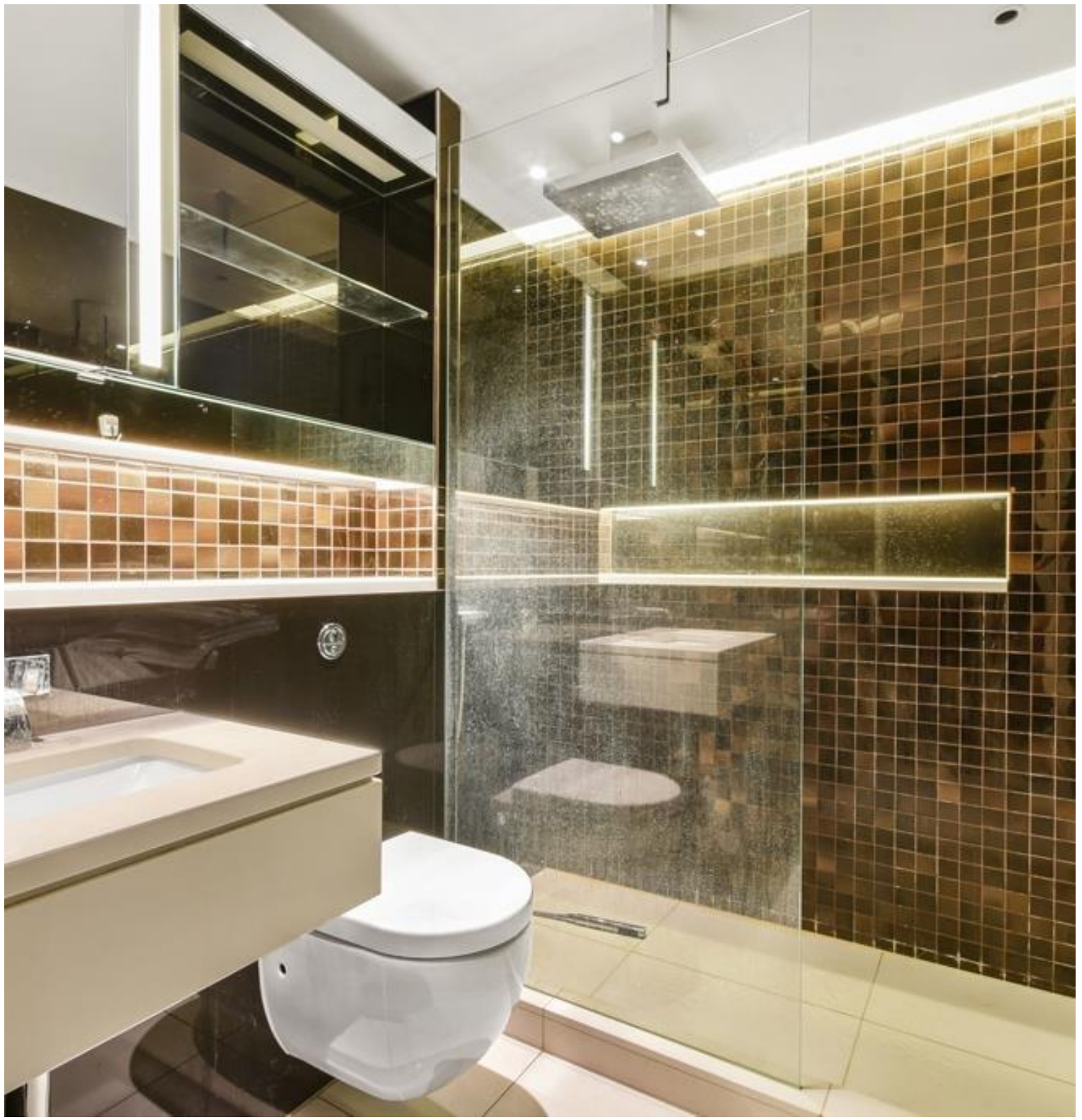




Moor Lane, London EC2Y

Price £640 per week - Furnished







Description

A luxury, fully furnished, Galley Suite on a high floor with the popular Heron, EC2.

This luxury apartment offers a good sized reception area with a balcony and stunning views of West London towards the London Eye and St. Pauls; partitioned sleeping area with a desk/working space, open plan fully fitted kitchen, dark porcelain flooring throughout and luxury shower room. The property has a high specification with comfort cooling, iPod docking system, ceiling speakers and central control panel.

The development is located in the heart of the City of London and is within easy reach of stations such as Bank (0.5 miles) and Moorgate (0.2 miles). The Heron benefits from an on-site gym, exclusive resident's club, 24 hour security and concierge. Offered fully furnished.

We understand that cooling / heating is delivered via a communal system for which separate charges apply.

Council tax band: Ed. Rent is payable on a monthly basis, and you may be required to pay more than a month's rent in advance for tenancies with annual rents exceeding £100,000. You will be required to pay a 1 week holding deposit following a successful offer. Tenancies with annual rents up to £50,000 will require a 5 weeks' security deposit, while those exceeding this threshold will require a 6 weeks' deposit. Utility bills, council tax, telephone line and broadband are not included in the rent. As well as paying the rent, you may also be required to make some additional permitted payments. If your tenancy does not qualify as an APT, additional fees may apply. Please visit jll.co.uk/fees for details of fees that may be payable when renting a property. To check broadband and mobile phone coverage please visit Ofcom here ofcom.org.uk/phones-telecoms-and-internet/advice-for-consumers/advice/Ofcom-checker

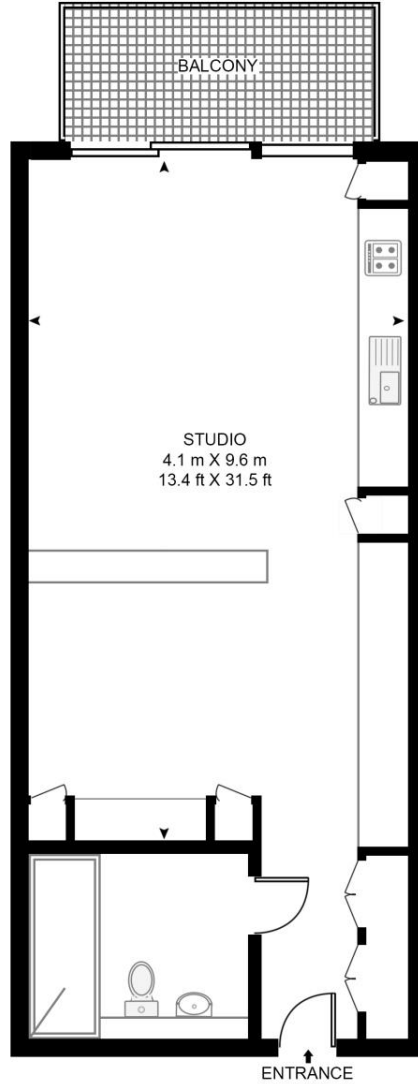
- Studio
- 1 Bathroom
- 29th floor
- Balcony with stunning views of West London
- High specification
- 24 hour concierge
- 0.1 mile from Moorgate Station
- Approx. 426 sq ft (39.6 sq m)
- Furnished
- EPC: C

Floorplan

426 sq ft | 40 sq m

THE HERON, MOOR LANE

APPROXIMATE GROSS INTERNAL FLOOR AREA 426 SQ.FT (39.6 SQ.M)



TWENTY NINTH FLOOR



This floor plan has been defined by the RICS Code of Measurement. This floor plan and all others are for approximate representative purposes only and upon usage is agreed to as such by the client.
WWW: hdvirtualart.com | TEL: 0203.974.1567 | EMAIL: info@hdvirtualart.com

City
25 Walbrook The Walbrook
Building,
London EC4N 8AF
+4420 7337 4000

Urban living, your way.

jll.co.uk/residential

© 2019 Jones Lang LaSalle IP, Inc. All rights reserved. All information contained herein is from sources deemed reliable; however, no representation or warranty is made to the accuracy thereof.

