



St. Georges Road, TW9

£2,995 Per calendar month

This beautiful two bedroom Victorian cottage has been recently finished to a high standard throughout, offering an open plan kitchen / breakfast room, modern reception and a south-facing landscaped garden.

Perfectly located for the amenities of Richmond Town Centre, Richmond Park, Kew Gardens, Richmond Riverside and Richmond Hill. Richmond train station offers access to and from London by tube (District line), Overground and rail (fast train to London Waterloo). London Waterloo is also served by North Sheen train station.

Features

Victorian Cottage
Two Bedrooms
Open Plan Kitchen
Recently Refurbished
Open-Plan Living Space
South Facing Garden.



St. Georges Road, TW9

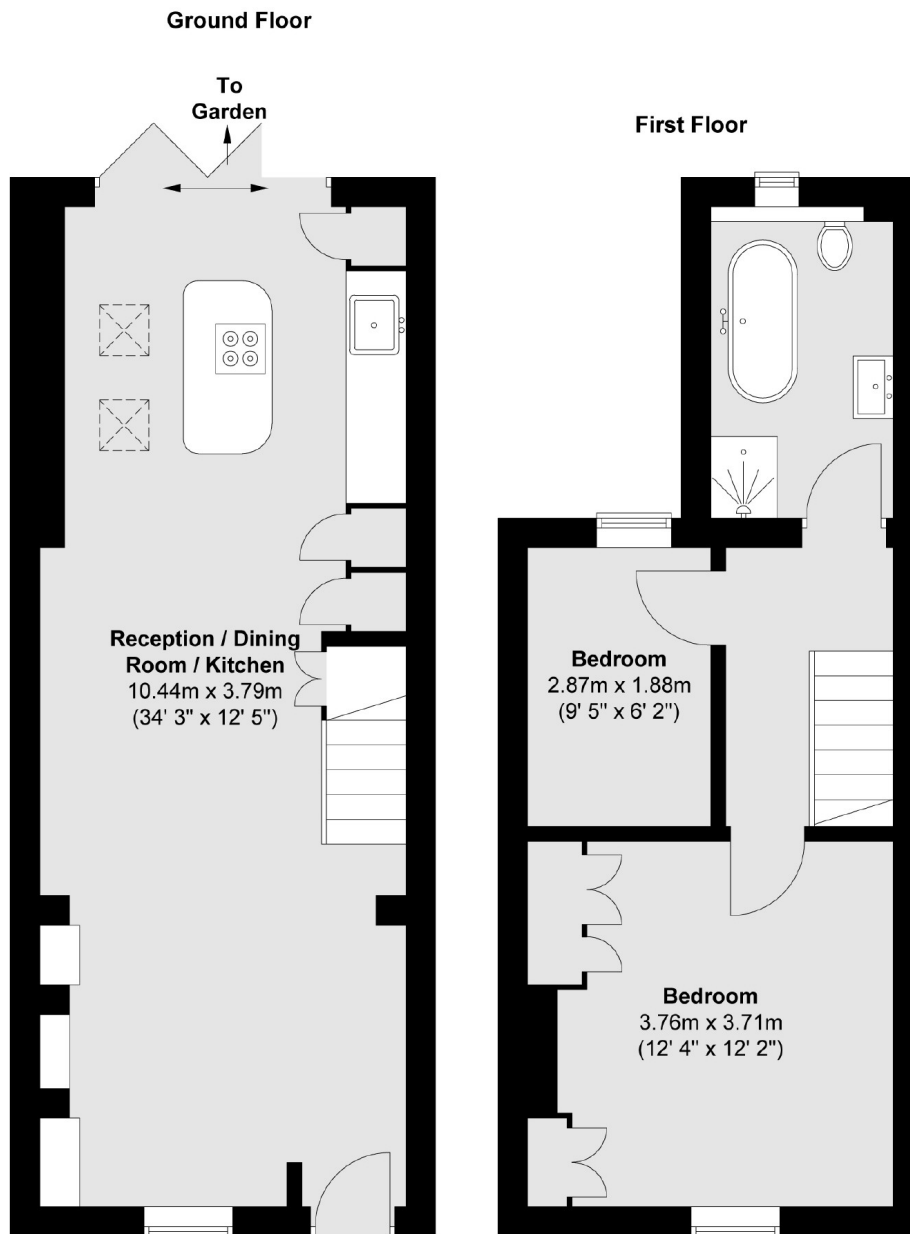
The property offers a stylish family-area, with bespoke bookcases and units, that leads into the dining room and an open-plan kitchen/breakfast room with a central island, high quality integrated appliances, and bi-folding doors that lead out onto the garden.

The landscaped south-facing garden is the perfect place for al-fresco dining and with a shed at the rear. This cottage also offers new windows, bespoke plantation shutters, immaculate thick-pile carpets and a loft space.

St. Georges Road provides good access to the town centre, where you will find an plethora of amenities, transport links and leisure facilities. Additionally, the area is renowned for its outstanding schools, whilst Kew Gardens and Richmond Park are nearby.



St. Georges Road, Richmond, TW9



Total area (approx.) : 70.5 sq. m (759 sq. ft)