



  
LANG TOWN  
& COUNTRY  
SALES

  
LANG TOWN  
& COUNTRY  
SALES

95 Cedar Park, Down Thomas, Plymouth, Devon, PL9 0AE

# Price £149,995



Positioned in an enviable coastal setting, this delightful two-bedroom detached chalet enjoys truly spectacular views across Plymouth Sound, the historic breakwater, and the stunning Cornish coastline beyond.

The property offers a bright and welcoming lounge where large windows perfectly frame the panoramic sea views, creating a relaxing space to sit and enjoy the ever-changing coastal scenery. The fitted kitchen provides practical workspace and storage, while the accommodation is completed by two comfortable bedrooms and a shower room featuring a modern three-piece suite.

To the front of the property is a private garden with a patio seating area, ideal for outdoor dining or simply relaxing while taking in the breathtaking outlook across the water.

This charming chalet offers a wonderful opportunity for those seeking a coastal retreat in a truly picturesque location.

**Location:** Bovisand is part of the natural coastline on the East side of the Plymouth Sound. With its country and coastal cliff footpaths, rocky shores and sandy beaches, the area provides enjoyment for all ages. It offers excellent walking, rock pooling, fishing and bathing all within approximately six miles of Plymouth City Centre with its historic Barbican and Hoe.

This property is being sold with vacant possession and no onward chain and should be viewed at the earliest opportunity.

## PROPERTY INFORMATION

**Tenure:** Share of Freehold

**Local Authority:** South Ham district Council

**Council Tax:** Band A - Double tax for second home does not apply as there is a 10-month occupancy restriction.

**Maintenance Charges:** £340.00 Per Year.

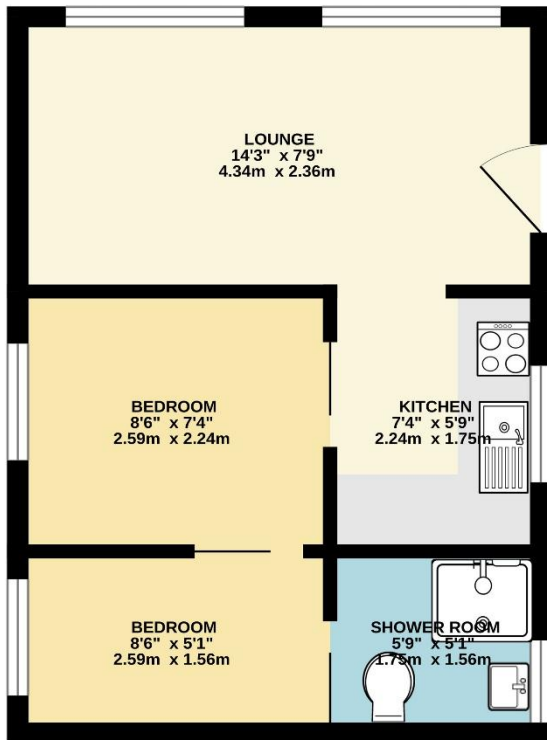
The above information is provided in good faith although we would recommend that prospective purchasers consult their own solicitor for formal verification.

To view this property call Lang Town & Country Estate Agents on **01752 456000**





GROUND FLOOR  
288 sq.ft. (26.8 sq.m.) approx.



TOTAL FLOOR AREA : 288 sq.ft. (26.8 sq.m.) approx.  
Measurements are approximate. Not to scale. Illustrative purposes only  
Made with Metropix ©2026

Lang Town & Country  
6 The Broadway  
Plymouth  
PL9 7AU  
Tel: 01752 456000  
Email: [plymstock@langtownandcountry.com](mailto:plymstock@langtownandcountry.com)  
[www.langtownandcountry.com](http://www.langtownandcountry.com)

Lang Town & Country endeavour to ensure the accuracy of property details produced and displayed, we have not tested any apparatus, equipment, fixtures, fittings or services and so cannot verify that they are connected, in working order or fit for purpose. A buyer must check the availability of any property and make an appointment to view before embarking on any journey to see a property.

