



Flat A, 25 Tabard Street London

£625,000
LEASEHOLD

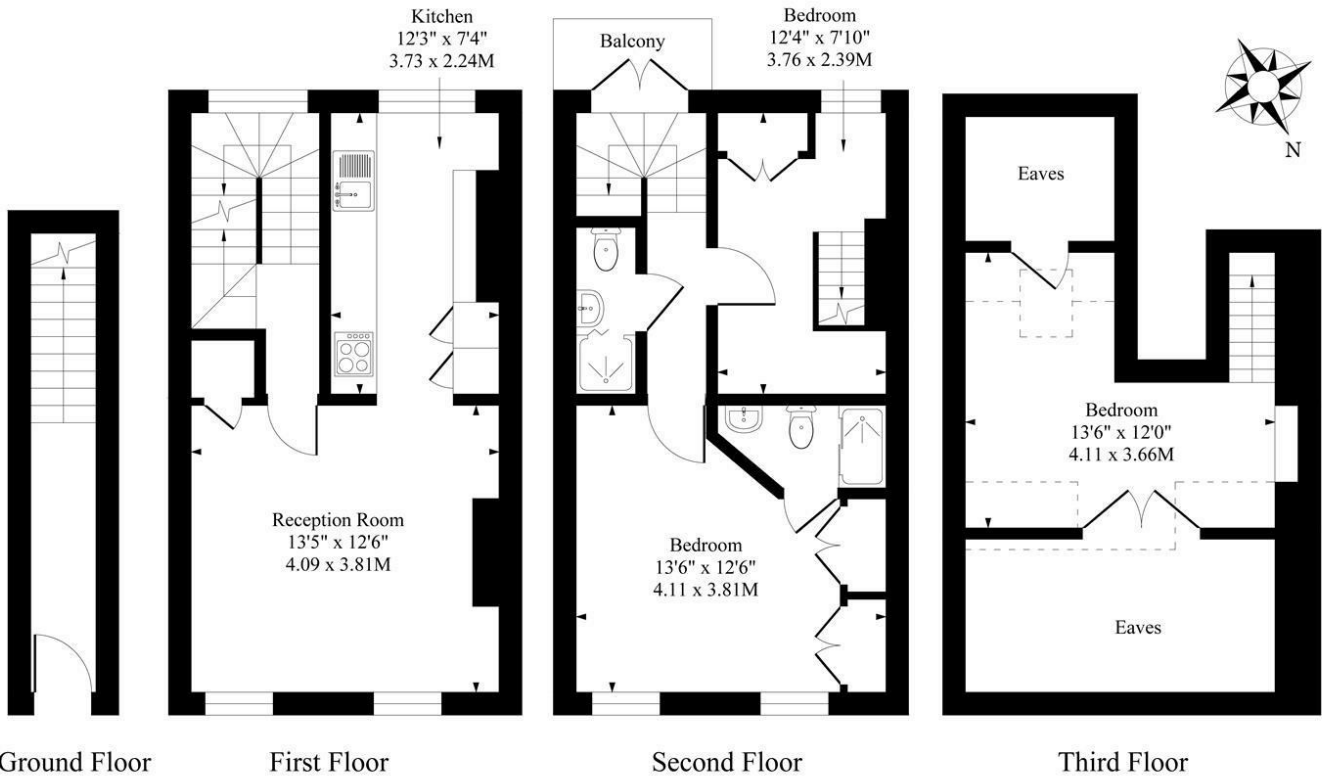
A well presented larger than average two bedroom apartment situated on Tabard St, a superb central location. The property boasts a very good size reception room, separate kitchen, two double bedrooms (one en-suite) with the second bedroom having an ideal separate office space and a newly renovated modern bathroom. This property is a must see!

The property also includes a lovely Juliette balcony, perfect for a late summers evening!

Call the sales department to reserve a viewing 0207 015 1360.



Tabard Street, LONDON, SE1



Approximate Gross Internal Area 870 Sq Ft - 80.82 Sq M

Measured in according with RICS guidelines. Every attempt is made to ensure accuracy
However all measurements are approximate.
The floor plan is illustrative purposes only and is not to scale



Energy Efficiency Rating		
	Current	Potential
Very energy efficient - lower running costs		
(92+)	A	
(81-91)	B	
(69-80)	C	
(55-68)	D	
(39-54)	E	
(21-38)	F	
(1-20)	G	
Not energy efficient - higher running costs		
	63	76
England & Wales		EU Directive 2002/91/EC

Agents Note: Whilst every care has been taken to prepare these particulars, they are for guidance purposes only. All measurements are approximate and are for general guidance purposes only and whilst every care has been taken to ensure their accuracy, they should not be relied upon and potential buyers/tenants are advised to recheck the measurements

Borough Lettings
230 Borough High Street
London
SE1 1JX

020 7015 1360
enquiries@leonardleese.com
www.leonardleese.com

