



55 Lovell House - 070797 4 Skinner Lane, Leeds, West Yorkshire, LS7 1AR

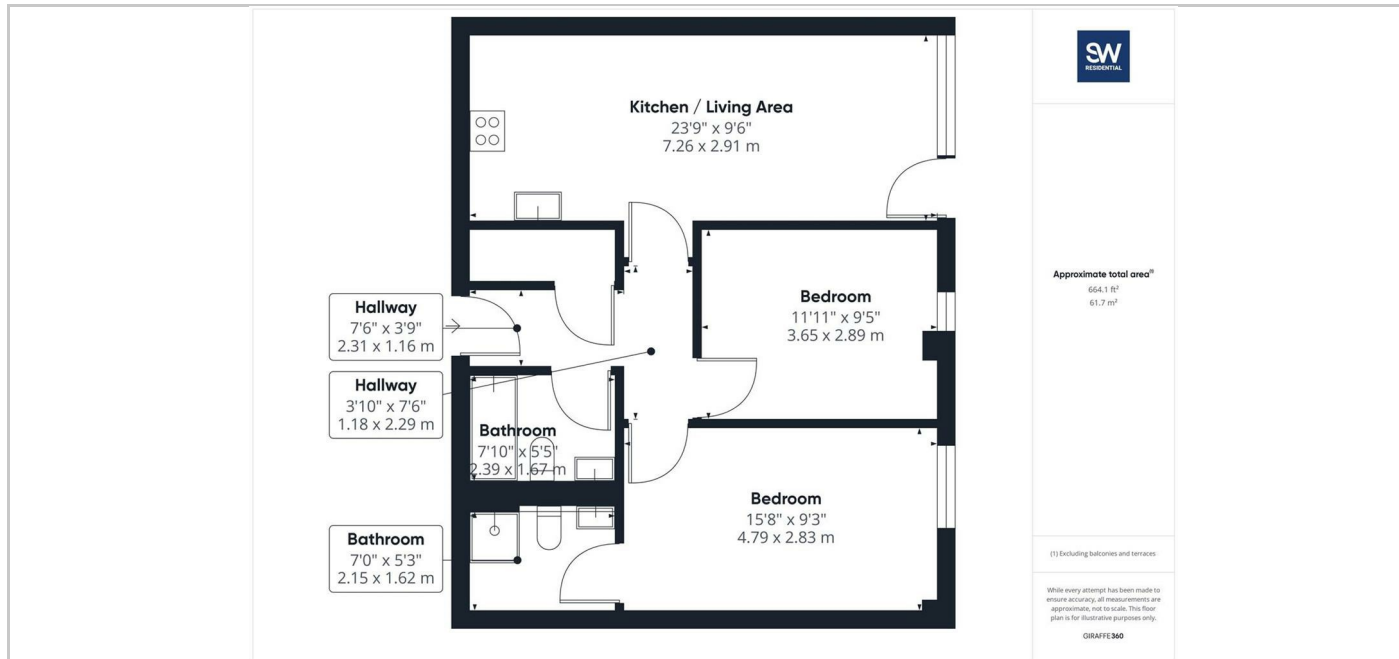
£1,100 PCM

SW
RESIDENTIAL

- Two Bedrooms & Two Bathrooms
- Open Plan Living Area
- Communal Gardens
- Furnished
- Allocated Parking Space
- Convenient Location
- Balcony
- Council Tax Band C
- Available early June

THE PROPERTY

A spacious two bedroom apartment comprising an open plan living area, with access to the balcony which overlooks communal gardens, a modern kitchen area with integrated appliances, a large master bedroom with en-suite shower room, a spacious second bedroom and house bathroom. With allocated parking space. Located on Skinner Lane, Lovell House is located within short walking distance to the City Centre's main shopping districts and benefits from good transport networks as well as been close by to a range of independent cafes, bars and restaurants. Furnished. Available at the beginning of June.



SITUATION

Directions

6th Floor Central Square, 29 Wellington Street, West Yorkshire, LS1 4DL
Tel: 0113 221 6000 Email: residential@sw.co.uk