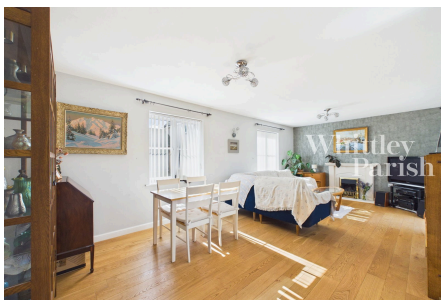


Red Robin Close, Tharston

Guide Price £350,000-£375,000

4 2 2



This four bedroom detached house is built of traditional brick and block cavity wall construction under an interlocking tiled roof with 16 solar panels. An entrance hall, with downstairs wc to side, leads to a dual aspect lounge, a reception room currently used as a large office lends itself for a number of purposes and a contemporary kitchen with integral appliances. A large conservatory is accessed off the kitchen and has views/access to the westerly facing garden. Upstairs the landing serves four bedrooms (en-suite to master) and a family bathroom. Externally the property is approached via a brick weave driveway providing off-road parking and leading to a double garage. To the rear, the gardens are predominantly laid to lawn with patio area, greenhouse to side and enclosed by brick walling and panel fencing.

Key Features

- GUIDE PRICE £350,000 - £375,000
- Vendors found onward property (with no onward chain)
- 16 Solar panels with feed-in tariff continuing until 2034
- Quiet location overlooking trees
- Spacious accommodation throughout
- Double garage
- Conservatory
- Westerly facing garden
- Walking distance to amenities
- Mains drainage - Air source heating - Freehold - EPC Rating C - Council Tax Band E

