



**74 High Street, Sutton Benger, Wiltshire, SN15 4RL**



Detached thatched cottage  
Sympathetically extended with lovely character  
throughout  
Versatile 3-5 bedrooms  
Two receptions and study  
Fitted kitchen  
3 bathrooms  
South-facing position  
Wraparound private gardens  
Ample off-street parking for numerous cars



01666 840 886  
jamespyle.co.uk



The Barn, Swan Barton, Sherston, Wiltshire, SN16 0LJ  
James Pyle Ltd trading as James Pyle & Co. Registered in England & Wales No: 08184953

**Price Guide: £850,000**

Approximately 1,789 sq.ft excluding store

‘Set within a south-facing position amongst wraparound gardens, a charming detached thatched cottage which has been sympathetically extended offering versatile accommodation’



### The Property

This detached thatched cottage features an abundance of charm and character occupying a sunny south-facing position towards the edge of the village of Sutton Benger. Originally constructed as two cottages around 500 years ago, the property has been sympathetically extended in modern times and has been superbly maintained. The accommodation has a versatile layout offering ground floor bedroom options, principally arranged over two floors extending to around 1,789 sq.ft.

The property is accessed over a shared driveway positioned at the side leading to a large parking bay for at least four vehicles. An entrance hall is conveniently accessed from the parking area and features a magnificent high vaulted ceiling with stairs leading to the first floor. The main reception area is arranged at the front benefitting from the natural southerly light and comprises a living room and dining room both with fireplaces, a study,

and a well-fitted kitchen equipped with a fridge/freezer, dishwasher, and microwave. There is a ground floor shower room alongside two further receptions/bedrooms. A utility room at the rear has accessed into the garage store. On the first floor, there are three bedrooms, a family bathroom, and an en-suite to the principal bedroom.

The cottage sits amongst wonderful wraparound gardens featuring cottage style planted borders, mature shrubs and trees providing a good degree of privacy. There are multiple patios positioned to make the most of the sunshine including a very large patio terrace at the rear with a delightful thatched well.

### Situation

Sutton Benger is a sought-after North Wiltshire village very well-located for road networks to London and the South West. Sutton Benger has a pub, the well-regarded La Flambe

restaurant, and popular primary school. The property is well-positioned for beautiful country walks including routes along the River Avon. Nearby Chippenham is less than 10 minutes drive away and has further facilities including mainline railway station, Secondary schooling, town centre leisure centre and shopping, as well as a range of other amenities. Sutton Benger is ideally located for the commuter, only 5 minutes away from Junction 17 of the M4 to provide excellent access to Bath, Bristol, Swindon and London.

### Additional Information

The property is Freehold with electric heating, mains drainage, water and electricity. The property is Grade II listed and located within a conservation area. Ultrafast broadband is available and there is good mobile phone coverage. Information taken from the Ofcom mobile and broadband checker, please see the website for more information. Wiltshire Council Tax Band E.

### Directions

From the M4 take the B4122 south for two miles. Turn left signed for Sutton Benger on the B4069 and proceed into the village of Sutton Benger. Proceed through the village towards Christian Malford and locate the driveway to the property as the very last one on the left.

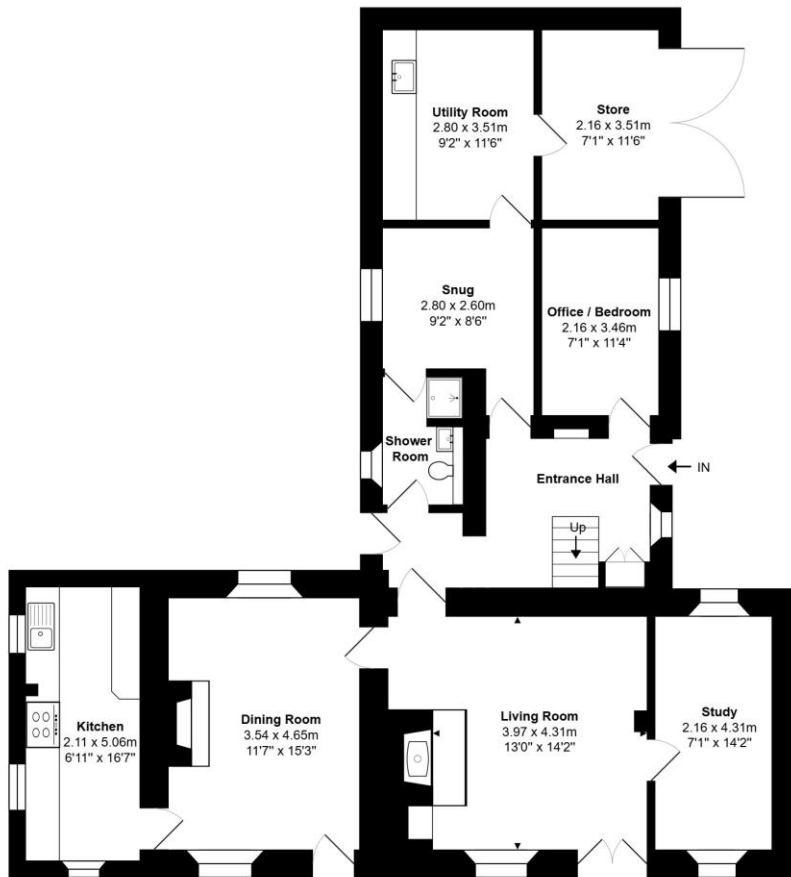
Postcode SN15 4RL

What3words: ///iteration.forgiven.coveted







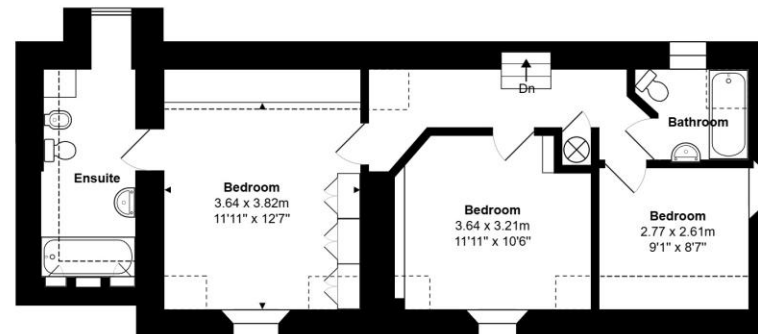


Ground Floor



Total Area: 166.2 m<sup>2</sup> ... 1789 ft<sup>2</sup> (excluding store)

All measurements are approximate and for display purposes only



First Floor

James Pyle Holdings Ltd and any parties they are acting for hereby give notice that these details are for guidance only and cannot guarantee accuracy of any description, dimension, condition or any required permission for occupation and use. It is not company policy to test any services or appliances in properties offered for sale and these should be verified by the purchaser's solicitors. James Pyle Holdings Ltd will not be liable for any loss arising from the use of these details. No responsibility is taken for any errors, omissions or misstatements within these particulars. It should not be assumed that the property has all the necessary planning, building regulation or other consents. These particulars do not form any part of any offer or contract and must not be relied upon as statements or representations of fact. James Pyle & Co is a trading name of James Pyle Holdings Ltd, registered in England & Wales. Registered number 10927906

COTSWOLD & COUNTY (HEAD OFFICE)

The Barn, Swan Barton, Sherston SN16 0LJ

01666 840 886 or 01452 812 054

LONDON (ASSOCIATE OFFICE)

121 Park Lane, Mayfair W1k 7AG

0207 0791 577