

50, Durdells Gardens, Bournemouth, BH11 9EZ



Property overview

Guide Price £250,000

A freehold 1 bedroom mid terraced bungalow in Bear Cross, Bournemouth. Close to local primary and secondary schools, social and shopping amenities, Kinson town centre, Ferndown, Bournemouth, Ringwood Retail Park, Poole and travel links to further afield.

The accommodation offers hallway (with hatch and ladder to part boarded loft space), storage room, bedroom, bathroom, lounge (with patio doors to rear garden), and a kitchen (with back door to rear garden).

The property also benefits from UPVC double glazing, gas-fired central heating, front garden, and rear garden (with rear access) featuring a sheltered lean-to decking area, lawn and outbuilding (with garden room and shed sections).

Offered with no forward chain and vacant possession.



Accommodation

Front garden:

Mainly laid to lawn, enclosed by low-level border, concrete path leading to front door, storm canopy and recess with electric meter box, UPVC double glazed door to:

Hallway: 15' 5" x 6' 0" (Narrowing to 2'11") (4.70m x 1.83m)

Hatch to loft (part boarded, light and ladder), high-level electric consumer unit, radiator, airing cupboard (providing storage with radiator), radiator, laminate flooring, doors to accommodation.

Kitchen: 11' 5" x 9' 6" (3.48m x 2.89m)

Window to rear aspect, range of eye and base level units, integrated fridge/freezer, work surfaces, space for washing machine, space for further appliance, splash back tiling, integrated fridge freezer, 1 1/2 bowl stainless steel sink with mixed tap over, space for cooker, cupboard housing gas fired combination boiler, laminate flooring, door to rear garden.

Lounge: 14' 7" x 9' 6" (4.44m x 2.89m)

Sliding patio doors to rear garden, radiator, TV point, laminate flooring.

Bedroom: 12' 6" x 9' 10" (3.81m x 2.99m)

Window to front aspect, radiator, TV point, laminate flooring, range fitted wardrobes (providing shelving storage and hanging space).

Bathroom: 8' 0" x 5' 5" (2.44m x 1.65m)

High-level obscured window to front aspect, part tiled walls, tiled floor, WC with concealed system, vanity sink unit with storage below, mirror cabinet, toiletry recess, semi-enclosed shower recess with shower over, chrome ladder style towel radiator.

Storage Room: 6' 8" x 5' 4" (2.03m x 1.62m)

Ceiling mounted vent, power and light, vinyl flooring.

Rear Garden:

Decking area sheltered by timber lean to with sloping polycarbonate corrugated roof, central lawn area, gate to rear access path, access to:

Outbuilding:

Split into garden room and shed.

Garden Room Section (of Outbuilding): 7' 5" x 7' 5" (2.26m x 2.26m)

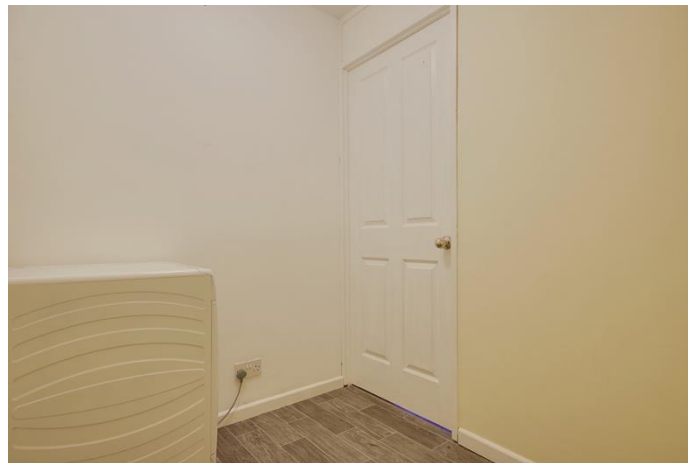
French doors from lawned area.

Shed Section (of Outbuilding): 7' 5" x 3' 9" (2.26m x 1.14m)

Providing storage.

Photography

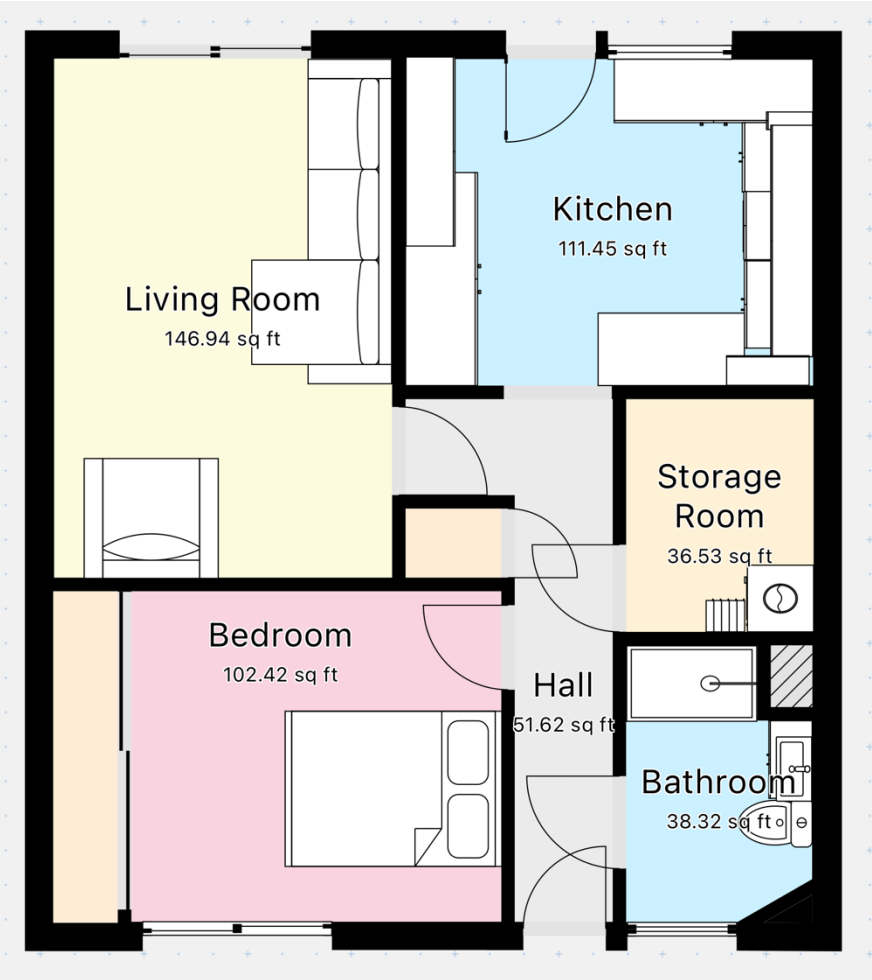






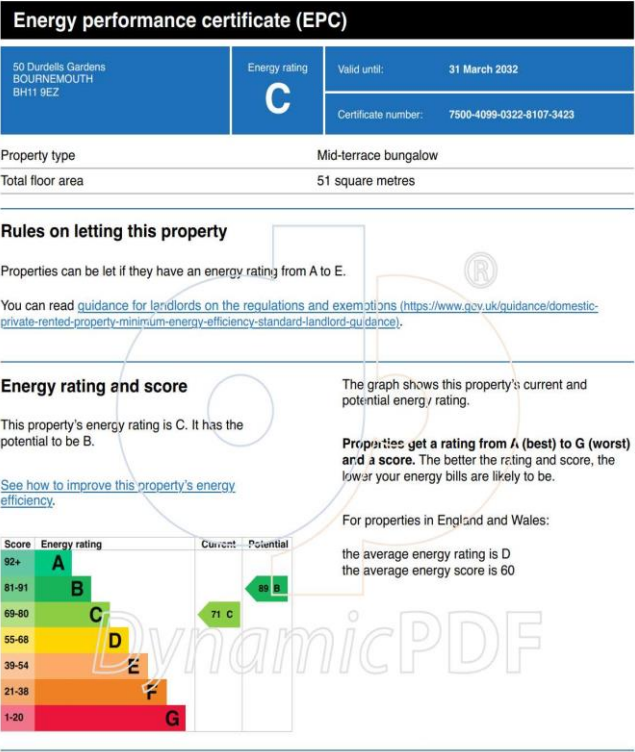


Floor Plan



EPC

DynamicPDF Rasterizer v2.0 evaluation (www.DynamicPDF.com)



MONEY LAUNDERING REGULATIONS 2003 intending purchasers will be asked to produce identification and proof of financial status when an offer is received. We would ask for your co-operation in order that there will be no delay in agreeing the sale. THE PROPERTY MISDESCRIPTIONS ACT 1991 The Agent has not tested any apparatus, equipment, fixtures and fittings or services and so cannot verify that they are in working order or fit for the purpose. A Buyer is advised to obtain verification from their Solicitor or Surveyor. References to the Tenure of a Property are based on information supplied by the Seller. The Agent has not had sight of the title documents. A Buyer is advised to obtain verification from their Solicitor. You are advised to check the availability of this property before travelling any distance to view. We have taken every precaution to ensure that these details are accurate and not misleading. If there is any point which is of particular importance to you, please contact us and we will provide any information you require. This is advisable, particularly if you intend to travel some distance to view the property. The mention of any appliances and services within these details does not imply that they are in full and efficient working order. These particulars are in draft form awaiting Vendors confirmation of their accuracy. These details must therefore be taken as a guide only and approved details should be requested from the agents.

Contact

Tel: 01202 805 806

Email: hello@simonandcoproperty.co.uk

Also find us on

