

STONE



Bellingham Drive RH2

£525,000

*“At Stone, we’re passionate about
the unique and awe-inspiring
architectural elements that transform
houses into dream homes.”*

The Stone Family



Tucked into the peaceful curve of Bellingham Drive, just a short stroll from the characterful heart of Reigate, this modern, two-bedroom ground-floor flat offers a way of living that feels both wonderfully convenient and quietly indulgent. Within its gated development, a sense of calm is immediate.

Cross the threshold and you're met with interiors that feel effortlessly composed. A palette of neutral tones creates a soothing backdrop, allowing both daylight and evening lamplight to settle beautifully across the rooms. Shutter blinds add an architectural crispness, enhancing the play of light while giving each space a pleasing sense of structure. Throughout, built-in cabinetry ensures that storage is never an afterthought, presenting a home that remains uncluttered and harmonious.

The large living and dining area is particularly striking: a wonderfully open space that manages to feel both airy and intimate. It's easy to imagine slow Sunday mornings here, with the shutters half-open, a coffee steaming on the table, and the quiet movement of the neighbourhood just beyond. Equally, the room adapts naturally to entertaining — dinner with friends, glasses clinking, laughter softening into the late evening.

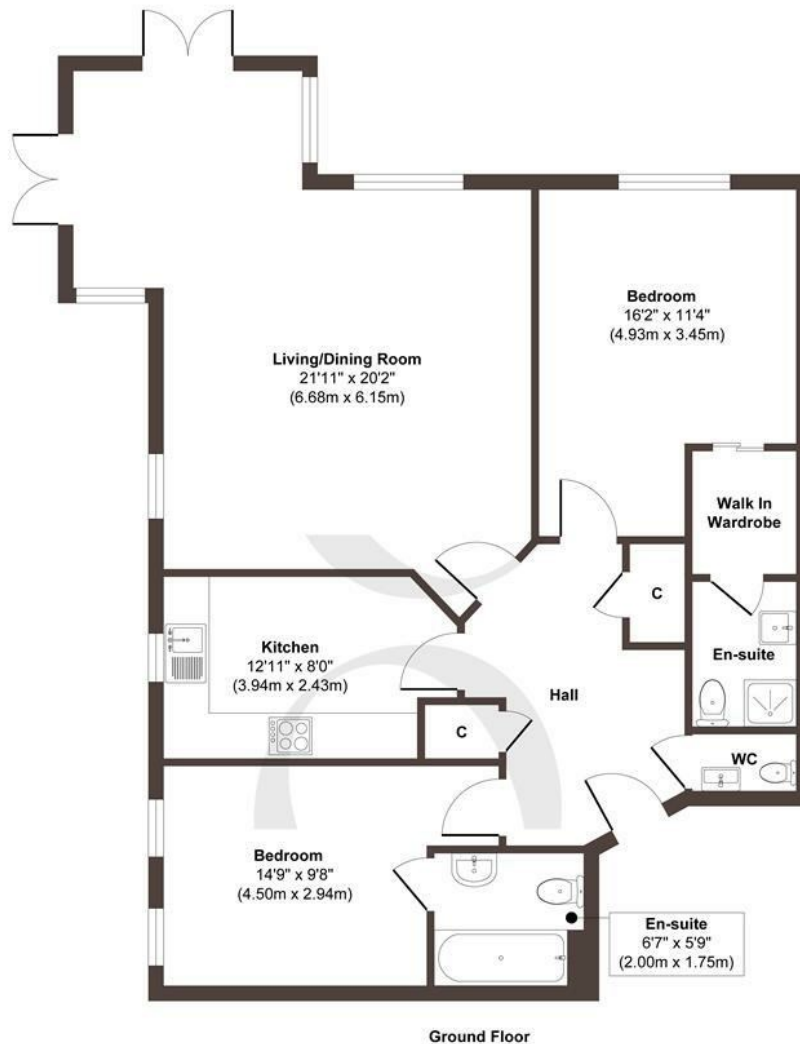


The modern kitchen, where clean lines and contemporary fittings create a hardworking yet elegant environment. Every element feels thoughtfully placed, from the generous cabinetry to the practical layout that encourages both cooking and conversation. It's a kitchen that supports everyday ease but also invites the occasional showcase supper.

Each of the two bedrooms has been given its own en suite bathroom, a rare luxury in a property of this size. These are rooms designed for rest and retreat — calm, comfortable, and wonderfully private. Whether waking to gentle morning light or unwinding after a long day, there's a sense of quiet sanctuary here. A separate cloakroom off the hallway provides additional convenience, ensuring guests can come and go with ease.

Beyond the interior, the flat benefits from its own private parking space within the secure gated grounds, a quietly significant detail in this sought-after pocket of Reigate. Yet despite the privacy, the location could hardly be more engaging





Approx. Gross Internal Floor Area 971 sq. ft / 90.20 sq. m
Illustration for identification purposes only, measurements are approximate, not to scale.
Produced by Elements Property

STONE

The Details

- Modern two-bedroom ground-floor apartment in sought-after Reigate location
- Set within an exclusive and secure gated development
- Neutral interior palette creating a calm, move-in-ready setting
- Built-in cabinetry offering excellent storage throughout
- Bright and airy rooms with excellent natural light
- Ground-floor position offering easy access and step-free living
- Private allocated parking space within the gated grounds
- Offered to the market with no chain

Size
Approx 971.00 sqft

Energy Performance Certificate (EPC)
Rating C TBC

Council Tax Band
E



STONE

Let's *Talk*

01737 301 557

hello@stoneestateagents.co.uk

stoneestateagents.co.uk

The particulars above are a guide, not an offer or contract. Descriptions photographs and plans are not statements or representations of fact. Measurements are approximate and not to scale. Prospective purchasers must verify the accuracy of the information within the particulars. Stone does not give any representations or warranties; nor represent the Seller legally. Stone has no liability, for any costs, losses or expenses incurred by the Seller or a prospective buyer relating to the sales and buying transaction. Our Sales Disclaimer, trading names and privacy policy on how your data is processed and used is found in full on our website in our Privacy Statement.

© Stone Estate Agents 2023 All rights Reserved