

STONE



*Lewes Crescent BN2*

£1,200,000

*“At Stone, we’re passionate about  
the unique and awe-inspiring  
architectural elements that transform  
houses into dream homes.”*

---

*The Stone Family*





Occupying a commanding position within one of Brighton's most iconic and historically significant addresses, this exceptional mansion apartment forms part of the magnificent Lewes Crescent, a listed Regency terrace celebrated for its classical symmetry, grandeur and timeless coastal elegance.

Built in the early 19th century during Brighton's rise as a fashionable seaside destination, Lewes Crescent remains one of the city's most prestigious and architecturally admired locations, offering an unrivalled sense of heritage, status and seafront living. This beautifully appointed apartment seamlessly blends historic character with refined contemporary luxury.

From the moment you enter, there is an immediate sense of scale, craftsmanship and calm. High ceilings adorned with ornate cornicing and original ceiling roses frame the interiors, while carefully preserved period features sit effortlessly alongside tasteful modern enhancements.







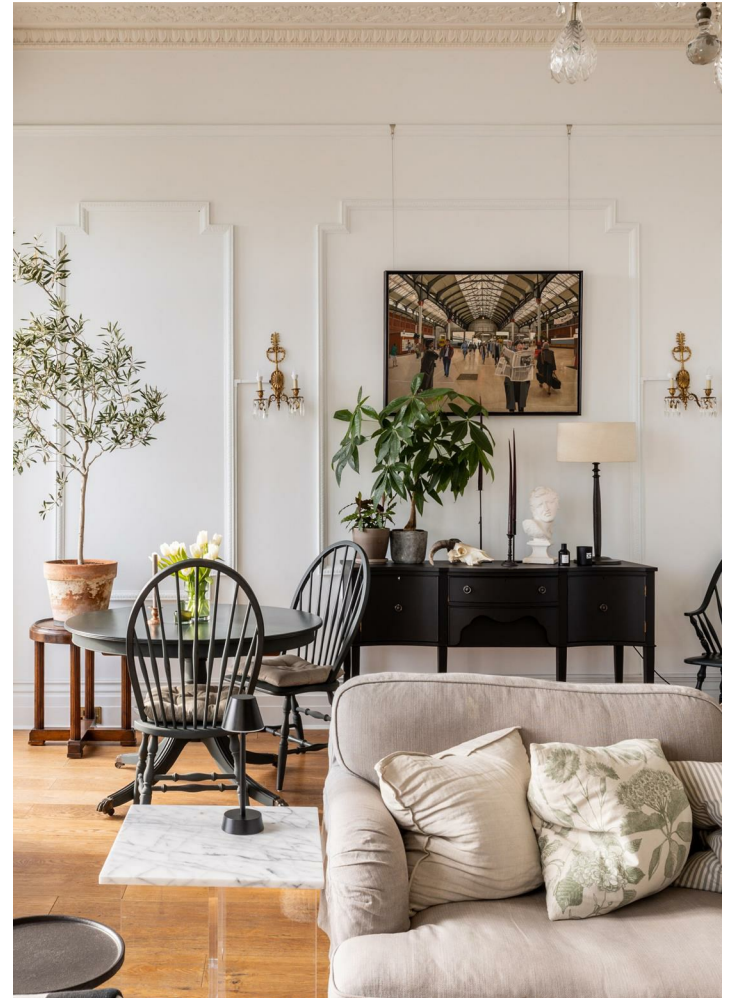
The heart of the home is the impressive open plan living and kitchen space, designed to maximise both light and outlook. From here, uninterrupted sea views unfold through elegant windows fitted with restored original shutters, while doors open onto a private balcony, creating a seamless connection between the interior and the coastline beyond. The bespoke kitchen, complete with a statement island, has been thoughtfully designed for both entertaining and everyday living, offering a sophisticated yet practical environment that feels entirely in keeping with the grandeur of the building.

Throughout the apartment, the attention to detail is exceptional. A listed mirror provides a striking focal point, echoing the history of the home, while original architectural elements have been carefully retained and enhanced rather than replaced. Every room feels considered, cohesive and quietly luxurious.

The accommodation is both generous and versatile. There are two spacious double bedrooms, each offering its own distinctive character. The principal bedroom is a true retreat, featuring a beautifully finished four-piece en suite bathroom that evokes the feel of a boutique hotel. The second double bedroom is equally impressive, complete with a striking cast iron fireplace that adds warmth and period charm. A further family bathroom serves guests and additional accommodation with ease.













A particularly impressive feature of the home is the large additional space that has been cleverly created, offering flexibility as a home office, dressing area or substantial storage, allowing the apartment to function comfortably as a two or three bedroom residence depending on lifestyle needs.

Adding to its rarity, the apartment benefits from dual access. While the main entrance positions the property as a first-floor home, enhancing privacy and elevating the sea views, there is also direct rear access to ground level, an unusual and highly desirable feature within a Regency mansion block. This unique layout adds a layer of practicality and individuality seldom found in properties of this nature.

The apartment has been meticulously maintained, with no stone left unturned and no compromise on quality. It is presented in outstanding condition throughout and is entirely move-in ready, offering a seamless transition for its next owner. Further enhancing the lifestyle on offer is access to the private Kemp Town Enclosures gardens, an exclusive and beautifully maintained green space reserved for residents, providing a peaceful retreat just moments from the sea.

A true celebration of Regency architecture, refined interiors and coastal living, Lewes Crescent represents a rare opportunity to acquire a home of exceptional beauty, history and distinction in one of Brighton's most coveted seafront locations.



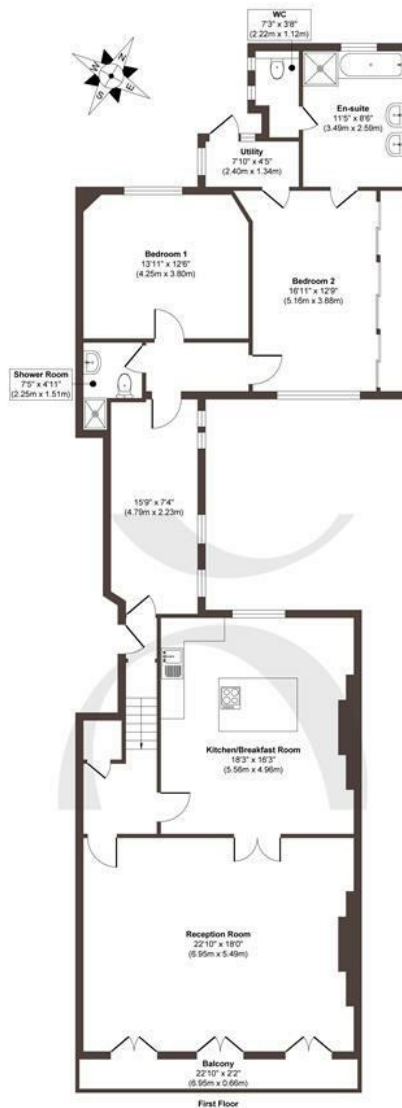












**Approx. Gross Internal Floor Area 1561 sq. ft / 145.11 sq. m**  
 Illustration for identification purposes only, measurements are approximate, not to scale.  
 Produced by Elements Property

**STONE**

## The Details

- Prestigious listed Regency mansion apartment on Brighton's iconic Lewes Crescent
- Direct sea views with private balcony overlooking the coastline
- Elegant layout offering flexibility for office or additional storage
- Impressive open-plan living space with bespoke kitchen and central island
- Beautifully preserved period features, including original shutters and a listed mirror
- Rare dual access, with main first-floor entrance and direct rear access to ground level
- Access to the exclusive Kemp Town Enclosures private gardens
- Easy access to Brighton Marina and the city centre
- Iconic seafront setting with panoramic coastal outlook
- Vibrant Kemptown lifestyle on the doorstep

Size  
 Approx 1561.00 sq ft

Energy Performance Certificate (EPC)  
 Rating D

Council Tax Band  
 E





# STONE

## Let's *Talk*

01737 301 557

[hello@stoneestateagents.co.uk](mailto:hello@stoneestateagents.co.uk)

[stoneestateagents.co.uk](https://stoneestateagents.co.uk)

The particulars above are a guide, not an offer or contract. Descriptions photographs and plans are not statements or representations of fact. Measurements are approximate and not to scale. Prospective purchasers must verify the accuracy of the information within the particulars. Stone does not give any representations or warranties; nor represent the Seller legally. Stone has no liability, for any costs, losses or expenses incurred by the Seller or a prospective buyer relating to the sales and buying transaction. Our Sales Disclaimer, trading names and privacy policy on how your data is processed and used is found in full on our website in our Privacy Statement.

© Stone Estate Agents 2023 All rights Reserved