

# We're Fully Booked

Due to the volume of interest on this property we are unable to offer any further viewings at this time.

Please register to ensure you see our new listings as they become available.



## Montmano Drive, West Didsbury, M20 2EB

£1,450 Per Calendar Month



### The Property

\*\*\* AVAILABLE AUGUST \*\*\* A larger style apartment presented to a high standard throughout, with a generous balcony and great location within a gated development in West Didsbury. Easy access to the ever popular Burton Road and Metrolink, the property is perfectly suited to a couple or professional sharers. The property enjoys elevated views from a first floor position and boasts numerous noteworthy features including an open plan living/kitchen extending over 26ft with integrated appliances to the kitchen and good sized balcony off, two excellent double bedrooms, the main with an en-suite shower room and dressing area, generous bathroom with white suite and chrome fittings, L-shaped entrance hall and a useful walk-in utility room/storage cupboard. In addition, there is uPVC double glazing and electric heating throughout. The property lies within a gated development with lift access to all floors, well tended communal grounds and allocated parking. Offered on a furnished basis. Contact our Didsbury office to arrange a viewing

View our Virtual Tour Here - <https://youtu.be/eqnj9PTPzoE>

EPC Rating - C // Council Tax Band D

### Directions

M20 2EB



- Available August
- Two Double Bedrooms
- Two Bathrooms
- Furnished
- Ideal for Couple or Sharers
- Modern Design Throughout
- Large Balcony
- One Parking Space
- Council Tax Band D
- EPC Rating C

Postcode - M20 2EB

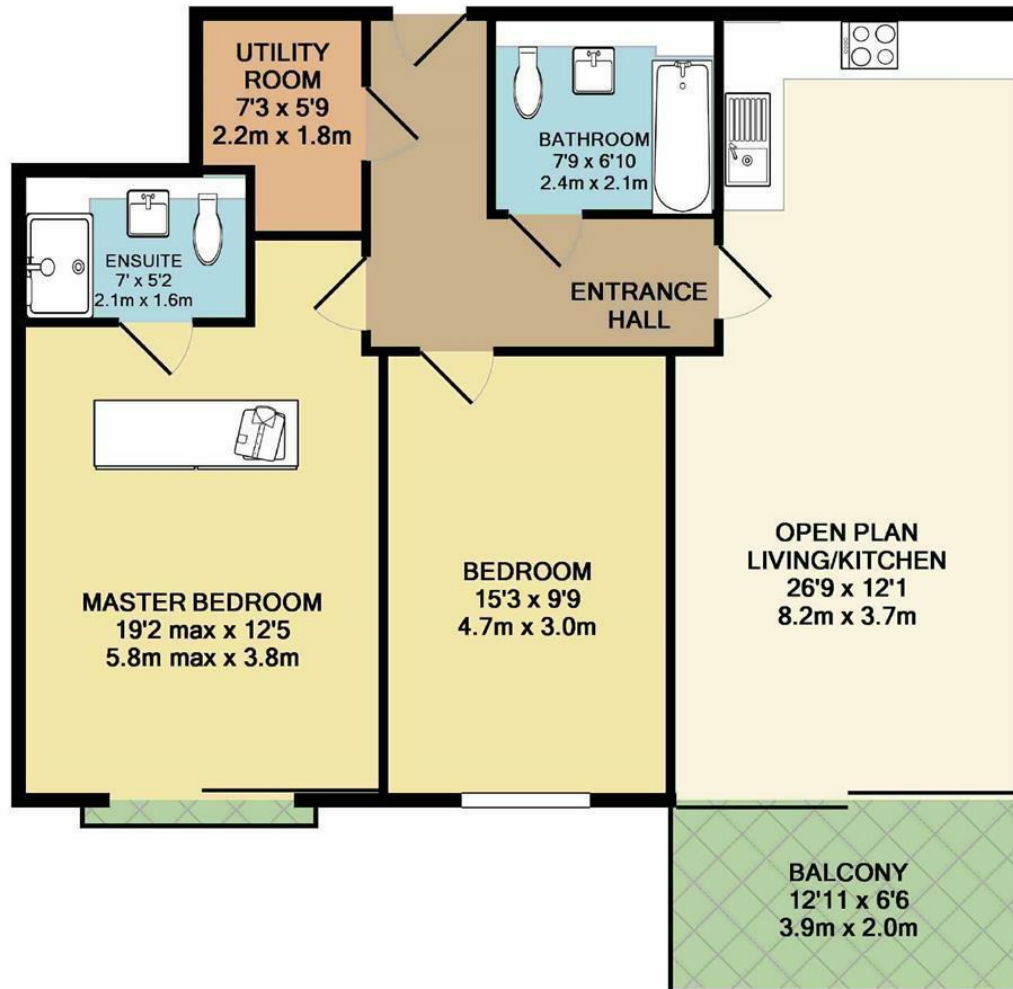
EPC Rating - C

Floor Area - sq ft

Local Authority - Manchester

Council Tax - D





TOTAL APPROX. FLOOR AREA 885 SQ.FT. (82.2 SQ.M.)  
 Measurements are approximate. Not to scale. Illustrative purposes only  
 Made with Metropix ©2017



These particulars are believed to be accurate but they are not guaranteed and do not form a contract. Neither Jordan Fishwick nor the vendor or lessor accept any responsibility in respect of these particulars, which are not intended to be statements or representations of fact and any intending purchaser or lessee must satisfy himself by inspection or otherwise as to the correctness of each of the statements contained in these particulars. Any floorplans on this brochure are for illustrative purposes only and are not necessarily to scale.

Offices also at: Wilmslow, Macclesfield, Hale, Sale, Chorlton, Glossop, Manchester & Salford

757-759 Wilmslow Road, Didsbury Village, Manchester

**0161 445 4480**

didsbury@jordanfishwick.co.uk  
 www.jordanfishwick.co.uk