



21-22, Prince Of Wales Terrace,  
, W8

£3,865 Per Week,

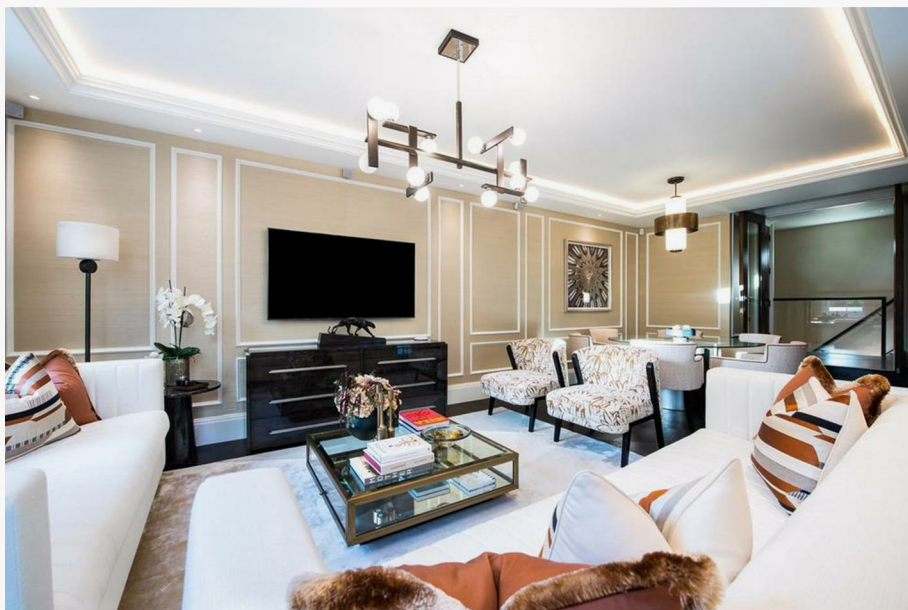
NAPIER WATT

T: 0207 935 0011  
E: [enquiries@napierwatt.co.uk](mailto:enquiries@napierwatt.co.uk)  
W: [napierwatt.co.uk](http://napierwatt.co.uk)

35 Berkeley Square, Mayfair, London, W1J 5BF







## Description

An exceptional three-bedroom, 1,412sq ft apartment arranged across the ground floor and Courtyard levels of the building. The apartment entrance features a mirror-fronted storage facility with steps down to the open-plan kitchen and reception space with panelled walls and ornate up-lighting coffer-coved ceiling. Dual-aspect doors open out to the courtyard terrace which is also accessible via the bedrooms and the beautifully decorated study. The master bedroom has a range of built-in wardrobes, a full marble en suite bathroom with underfloor heating, mirror-fronted cabinet units with integrated demister, and a door leading to the private courtyard. The second bedroom also offers a range of built-in wardrobes and an en suite marble shower room whilst bedroom 3 opens out onto the private terrace. All bedrooms come with Samsung smart TVs with Sonos soundbars and comfort cooling.

3 Bedrooms : 3 Bathrooms : EPC Rating B : Kensington & Chelsea Council Tax Band G

## Key Features

- PORTER
- WIFI
- VIDEO ENTRY
- AIR CONDITIONING
- CCTV

## Terms

Fees & Charges: Tenancies exceeding £100,000 Per annum £480 inc VAT, Tenancies where a company is a tenant £480 Inc VAT.



IMPORTANT: We would inform prospective purchasers that these sales particulars have been prepared as a general guide only. A detailed survey has not been carried out, nor the services, appliances and fittings tested. Room sizes should not be relied upon for furnishing purposes and are approximate. If floor plans are included, they are for guidance only and illustration purposes only and may not be to scale. If there are any important matters likely to affect your decision to buy, please contact us before viewing the property.