



4 Bed  
House - Detached  
located in Knottingley

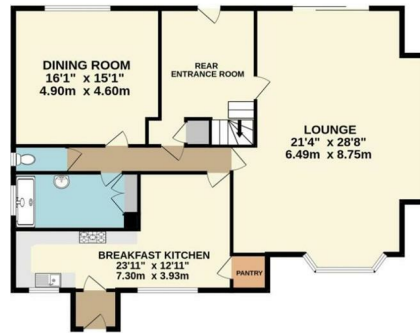
Offers In The Region Of  
£650,000



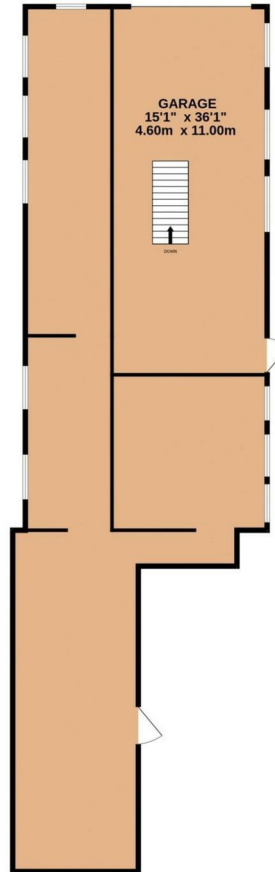
**enfields**



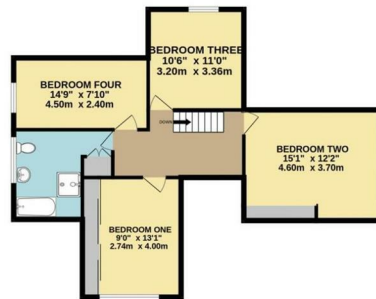
GROUND FLOOR  
1335 sq.ft. (124.0 sq.m.) approx.



GARAGE  
2081 sq.ft. (193.3 sq.m.) approx.

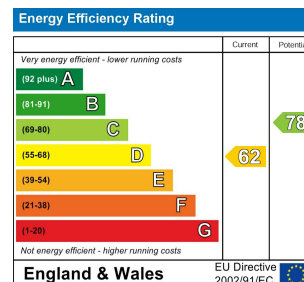


1ST FLOOR  
747 sq.ft. (69.4 sq.m.) approx.



TOTAL FLOOR AREA : 4163 sq.ft. (386.7 sq.m.) approx.

Whilst every attempt has been made to ensure the accuracy of the floorplan contained here, measurements of doors, windows, rooms and any other items are approximate and no responsibility is taken for any error, omission or mis-statement. This plan is for illustrative purposes only and should be used as such by any prospective purchaser. The services, systems and appliances shown have not been tested and no guarantee as to their operability or efficiency can be given.  
Made with Metropix ©2025



## CONTACT

30 Newgate  
Pontefract  
WF8 1DB

E: sales-pontefract@enfields.co.uk  
T: 01977 233124

# enfields