



Bermondsey Wall East, SE16

£1,550,000

Offering spectacular views of Tower Bridge and the London skyline, this three double bedroom split level flat is immaculately presented and boasts a large private roof terrace, parking and is being sold chain free.

Corbetts Wharf is only 0.2 miles to the Jubilee line (Bermondsey Station) and 0.4 miles to the Overground (Rotherhithe Station), offering excellent transport links to the West End, the City, Canary Wharf, Shoreditch and beyond.

Features

- Three Bedrooms
- Two Bathrooms
- Private Roof Terrace
- Stunning Condition
- Chain Free
- Riverside Development



Bermondsey Wall East, SE16

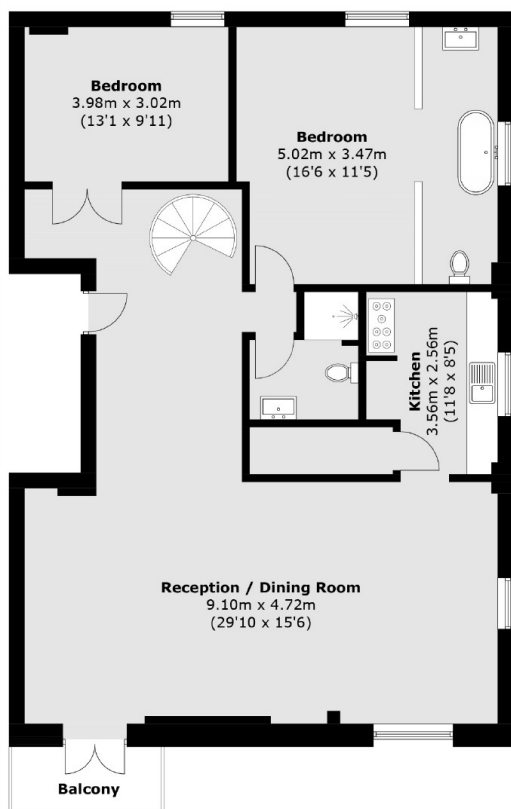
Arranged over 1,500sqft, this split level flat apartment boasts a large living space with views of the river and Tower Bridge, separate kitchen, and large roof terrace offering panoramic views of London.

The flat also offers three large double bedrooms with the master bedroom boasting an impressive en-suite. The flat also has an additional family bathroom and lots of built in storage.

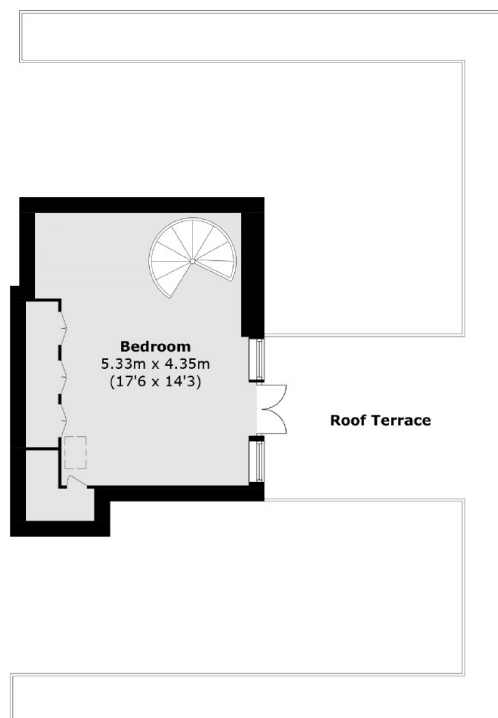
The apartment is in close proximity to the deli's, coffee shops and restaurants of Shad Thames, Maltby Street and Bermondsey Street.



Bermondsey Wall East, London, SE16



Third Floor



Mezzanine

Total area (approx.): 143.2 sq. m (1,541.4 sq. ft)
(Including Mezzanine)
Roof Terrace / Balcony area: 42.5 sq. m (457.5 sq. ft)