



14 Hastingwood Court,
Pembroke Road | | Walthamstow | E17 9NQ

£1,500 PCM



STRETTONS

Key features

- Walthamstow Village Location
- Unfurnished
- One Double Bedroom
- Fitted Kitchen with Appliances
- Off Street Parking Via Electric Gates & Well Maintained Communal Gardens
- Electric Heating
- Within 0.4 mile of Walthamstow Central Station (Victoria Line)
- Available End Of July
- EPC Rating: D (60)
- Council Tax Band B

Description

Strettons Residential is delighted to present this exquisite one-bedroom top floor apartment located in the highly desirable Walthamstow Village, on Pembroke Road, Hastingwood Court.

The apartment features a spacious double bedroom, a separate reception room that offers a welcoming atmosphere, and a well-appointed fitted kitchen complete with modern appliances. The three-piece bathroom suite is both functional and elegant, ensuring a pleasant experience for residents and guests alike.

One of the standout features of this property is the secure off-street parking, accessible via electric gates, providing peace of mind for vehicle owners. Additionally, residents can enjoy the beautifully maintained communal gardens, perfect for relaxation or socialising with neighbours.

Conveniently situated within just 0.4 miles of Walthamstow Central Station, this property offers excellent transport links to Central London via the Victoria Line and Overground services. This prime location not only provides easy access to the vibrant city but also allows residents to enjoy the unique charm and community spirit of Walthamstow Village.

Tenancies Signed on or after 1st June 2019

Holding deposit - 1 week's rent

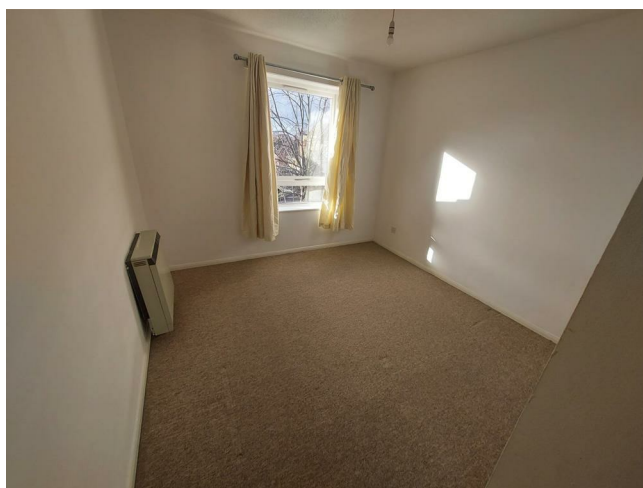
Security deposit - 5 week's rent (rent of £50,000 or over per annum - 6 week's rent)

Unpaid rent - 3% above Bank of England base rate from Rent Due Date after 14 days in arrears.

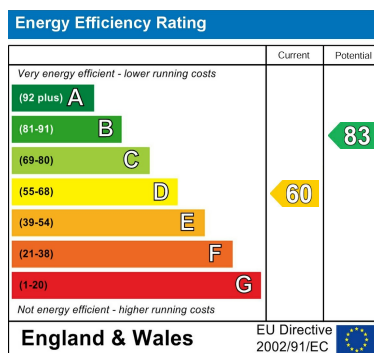
Lost keys - Cost of replacement key or other security device/lock replacement/locksmith.

£15/hour (inc. VAT) for extra costs incurred in time taken to replace keys.

Directions







Council Tax Band B EPC Rating D



69 Paul Street
London
London
EC2A 4NG
02085 094406

michael.mercer@strettons.co.uk