



Wandsworth Bridge Road, SW6

£576 Per week

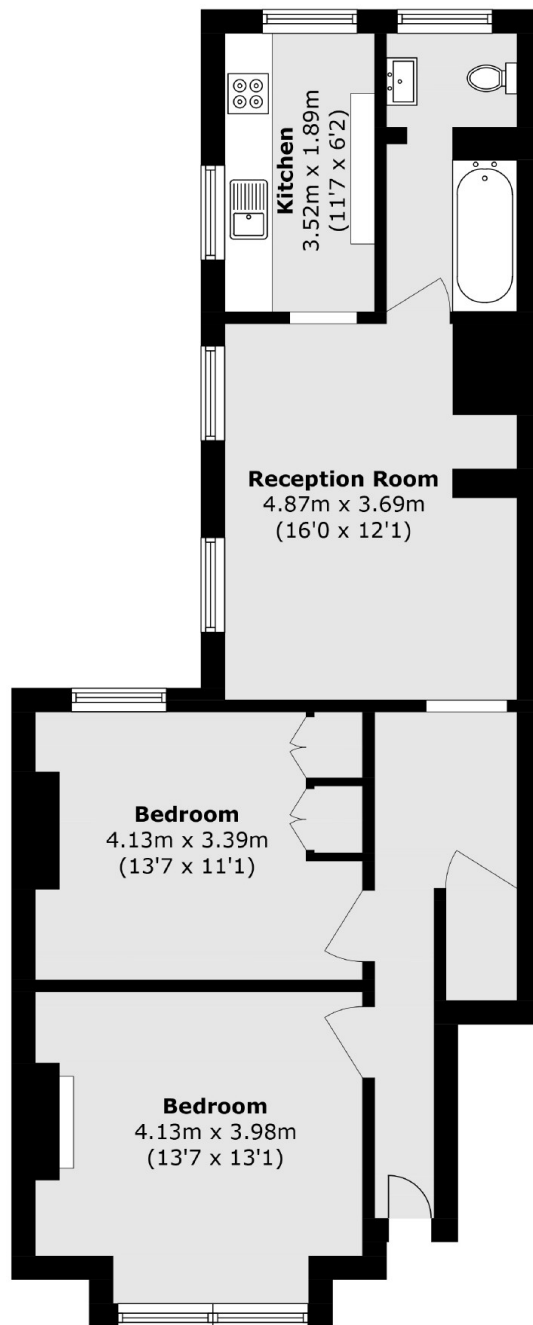
A bright and contemporary two bedroom apartment situated in this period conversion. The property offers a large open plan kitchen/reception room, two large double bedrooms, wood flooring throughout and a family bathroom.

The property is perfectly located for the local amenities on Wandsworth Bridge Road with transport links of either Parsons Green and Fulham Broadway close by.

Features

- Period Conversion
- Private Entrance
- Wood Flooring
- Light and Airy
- Two Double Bedrooms
- Open Plan

Wandsworth Bridge Road, London, SW6



Total area (approx.): 71.1 sq. m (765.3 sq. ft)

Dexters

Parsons Green
656 Fulham Road
London
SW6 5RX
Lettings
020 7384 1400

Energy Rating: . We aim to make our particulars both accurate and reliable. However they are not guaranteed; nor do they form part of an offer or contract. If you require clarification on any points then please contact us, especially if you're traveling some distance to view. Please note that appliances and heating systems have not been tested and therefore no warranties can be given as to their good working order.

 **RICS** | Regulated
Estate Agent
and Letting Agent

dexters.co.uk