

Wiverton Tower, 4 New Drum Street

, London E1 7AS

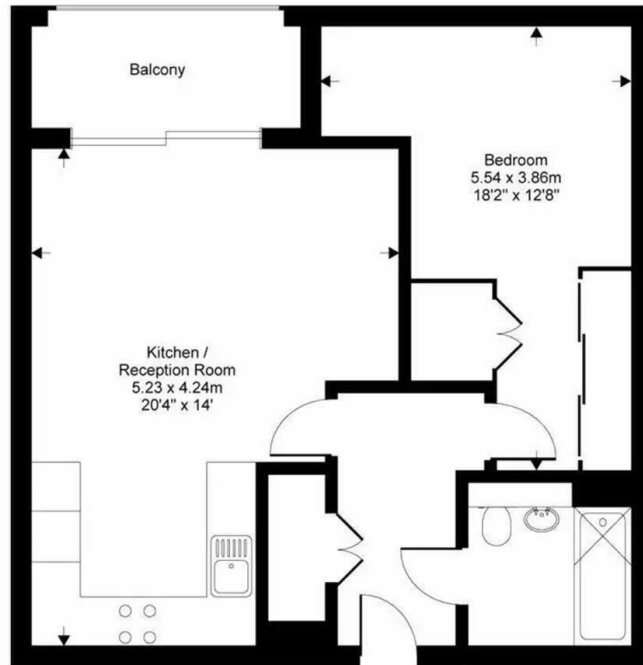
- One-Bedroom Apartment
- Open-Plan Living And Dining Area
 - Lift Access
- Excellent Transport Links (Aldgate East & Aldgate Stations)
 - EPC-B
- Floor-To-Ceiling Windows
 - 24-Hour Concierge
 - Secure Entry System
- Close To The City And Shoreditch
 - CTB-E

£3,100 Per Month

Local Authority **Tower Hamlets**
Council Tax Band **E**
EPC Rating **B**

Wiverton Tower, 4 New Drum Street, London, E1

Gross internal floor area (approx):
52.1 sq m / 561 sq ft
For Identification only - Not to scale
Niche Communications



London Office Office

Spaces Victoria, 25 Wilton Road, Pimlico,
London, SW1V 1LW

Contact

020 3084 3094
XL@londonvictoriagroups.co.uk
www.londonvictoriagroups.co.uk

Agents Note: Whilst every care has been taken to prepare these particulars, they are for guidance purposes only. All measurements are approximate and for general guidance purposes only and whilst every care has been taken to ensure accuracy, they should not be relied upon and potential buyers/tenants are advised to recheck the measurements.