



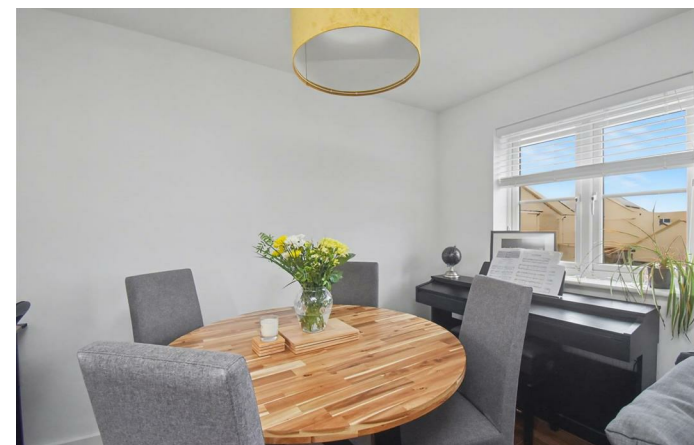
54 Livingstone Road

Corby, NN18 8TR



Simpson West

Located within the highly regarded Oakley Rise development is this immaculately presented TWO bedroom detached coach house located within a quiet cul-de-sac. The property occupies a pleasant position and is within walking distance to the local school, shops and other amenities. Features include an entrance hall, spacious landing, an open plan living dining room, modern fitted kitchen, two good sized bedrooms with the master bedroom boasting an en-suite shower room, in addition there is the main family bathroom. To the rear of the property is private access leading to a large storage cupboard. To the front is off road parking and a single garage. Early viewings are highly encouraged.
Energy Rating B. Council Tax Band B.

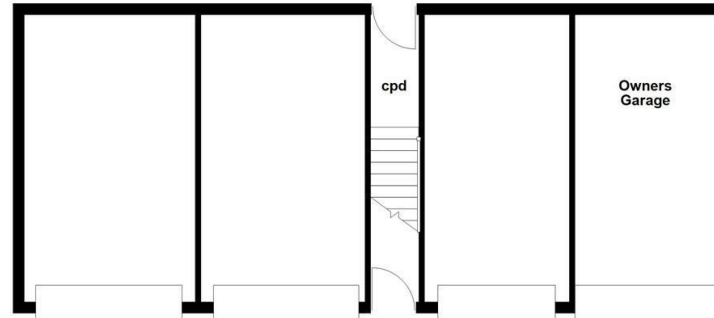


£195,000

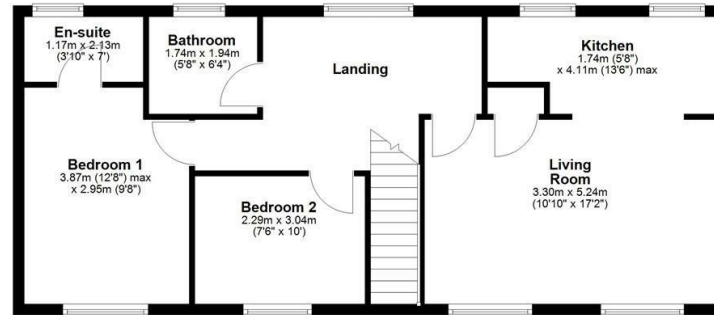
2 2 1




Basement



First Floor



Energy Efficiency Rating

	Current	Potential
<i>Very energy efficient - lower running costs</i>		
(92 plus) A		
(81-91) B	85	85
(69-80) C		
(55-68) D		
(39-54) E		
(21-38) F		
(1-20) G		
<i>Not energy efficient - higher running costs</i>		
England & Wales	EU Directive 2002/91/EC 	



When you buy with Simpson West, you know **you'll be in safe hands**. From the moment you walk through our doors, we'll make you **feel truly welcome**. Our sales consultants and financial advisors will take you through **every step of the process**, offering **free expert advice** along the way, from help choosing the right mortgage and insurance through to finding your conveyancer. And if you need help selling your home too, **with over 20 years of local experience, you can trust us to get you moving**.



**Simpson
West**

Making Every
Journey Personal



01536 202007

info@simpsonwest.co.uk

<https://www.simpsonwest.co.uk/>

64 Corporation Street, Corby, Northants, NN17 1NH