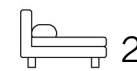




Living  
made  
better

Roma Corte  
Lewisham, SE13 7GS



£2,100 PCM

# Roma Corte, Lewisham, SE13 7GS

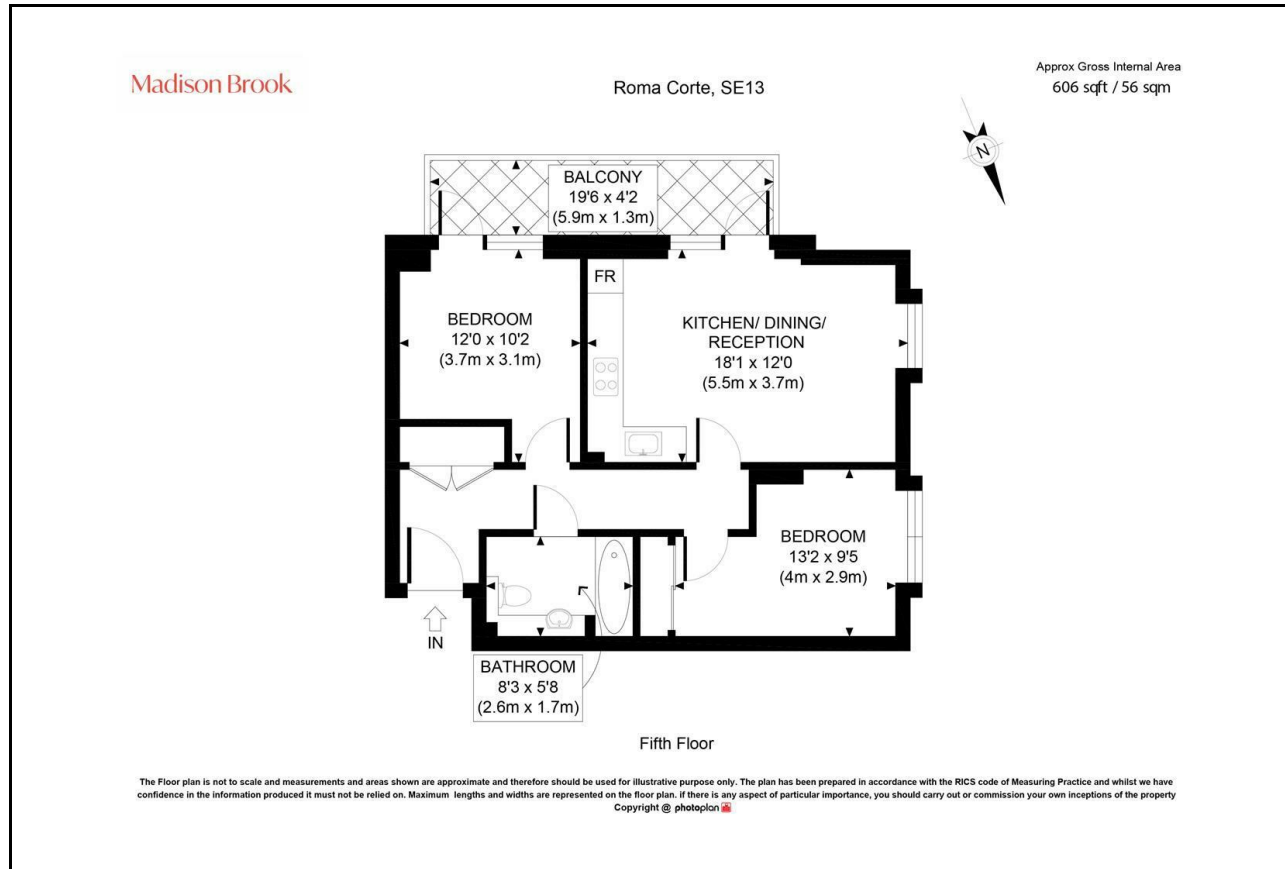
Madison Brook

## Property Summary

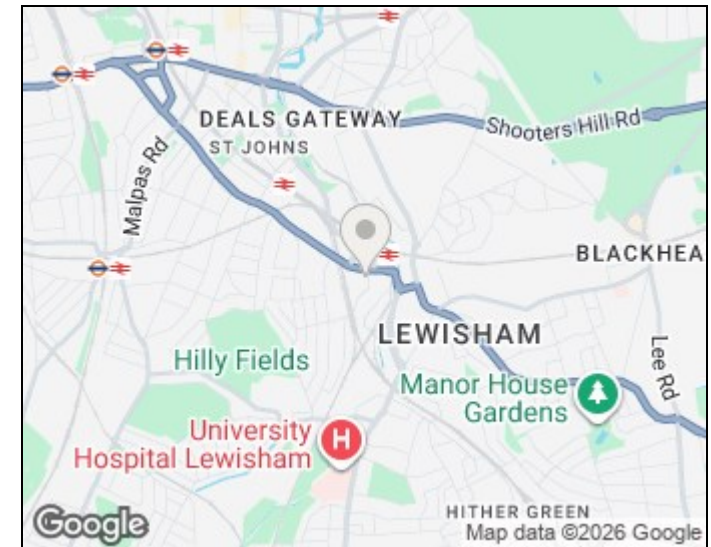
This beautifully presented two bedroom apartment is located on the fifth floor of Roma Corte, forming part of the popular Renaissance development. Set over 606 Sq. Ft of internal space, the property comprises of a bright living room, a private balcony, an open-plan kitchen, a generously sized principal bedroom with fitted wardrobes, a chic family bathroom suite and an additional well proportioned double bedroom with ample storage to hallway.

Ideally situated just a moments' walk to Lewisham Station (DLR & Southeastern). Residents can enjoy use of a 24 Hour Concierge, communal garden, access to a range of local amenities and stunning walks across Greenwich and Blackheath.

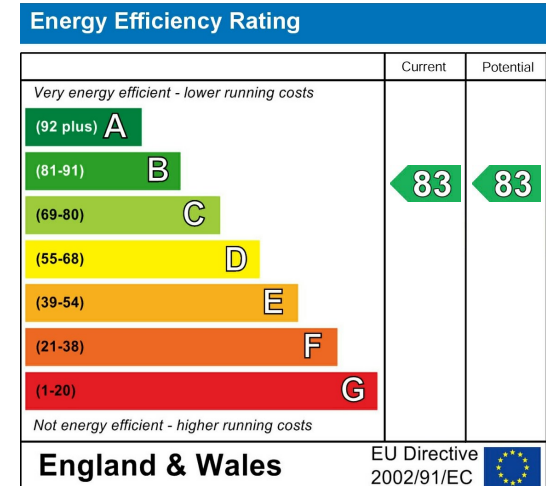
## Floorplan



## Area Map



## Energy Efficiency Graph



These particulars, whilst believed to be accurate are set out as a general outline only for guidance and do not constitute any part of an offer or contract. Intending purchasers should not rely on them as statements of representation of fact, but must satisfy themselves by inspection or otherwise as to their accuracy. No person in this firm's employment has the authority to make or give any representation or warranty in respect of the property.

43 Loampit Vale, Lewisham, London, SE13 7FT

Tel: 020 3946 6200 Email:

lewisham@madisonbrook.com

<https://madisonbrook.com/>