



3 Saffrons Mead, 2 Grassington Road, Eastbourne, BN20 7BG

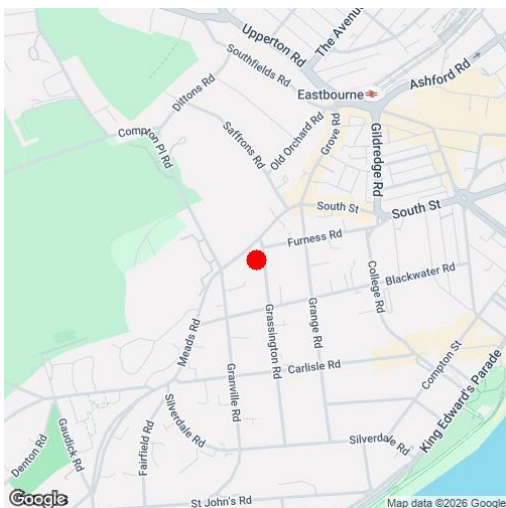
Price £290,000 | Leasehold



TOWN CENTRE OFFICE
01323 416716

MEADS STREET OFFICE
01323 737962

A pleasant well presented two double bedroom flat located on the ground floor of this well maintained purpose built block in the popular Lower Meads area of Eastbourne opposite the Saffrons sports ground. This delightful property is offered to the market chain free and boasts accommodation comprising communal entrance hall, spacious private entrance hall, sitting/dining room enjoying a dual aspect overlooking the communal gardens, well fitted kitchen with range of matching wall and base units, modern bathroom/wc, two excellent size double bedrooms with the main bedroom enjoying the benefit of an en-suite shower room/wc. The property benefits from having stylish fitted window shutters to some windows and further benefits include double glazing and gas central heating. Saffrons Mead sits in well kept communal gardens and there is the convenience of an allocated covered car parking space. The property is located within close proximity to Eastbourne town centre, train station, seafront and theatres.





At a Glance:

- Well presented two double bedroom ground floor flat
- Popular Lower Meads location
- Chain Free
- Kitchen
- Bathroom and en-suite shower room
- Spacious entrance hall
- Fitted window shutters
- Double glazing
- Gas central heating
- Allocated covered car parking space

Accommodation:

COMMUNAL ENTRANCE HALL

PRIVATE ENTRANCE HALL

SITTING / DINING ROOM

15'1" (4.6m) x 14'9" (4.5m)

KITCHEN

15'1" (4.6m) x 6'4" (1.93m)

BEDROOM 1

12'6" (3.81m) x 9'8" (2.95m) to front of wardrobes

EN-SUITE SHOWER ROOM

BEDROOM 2

11'5" (3.48m) x 10'0" (3.05m) to front of wardrobes

BATHROOM

OUTSIDE:

COMMUNAL GARDENS

COVERED PARKING SPACE

LEASE:

999 years from 1st June 1988

MAINTENANCE:

£3,566.03 per annum ending 24 June 2026

GROUND RENT:

not applicable

PETS:

not allowed

LETTING:

allowed

COUNCIL TAX:

Band 'E'

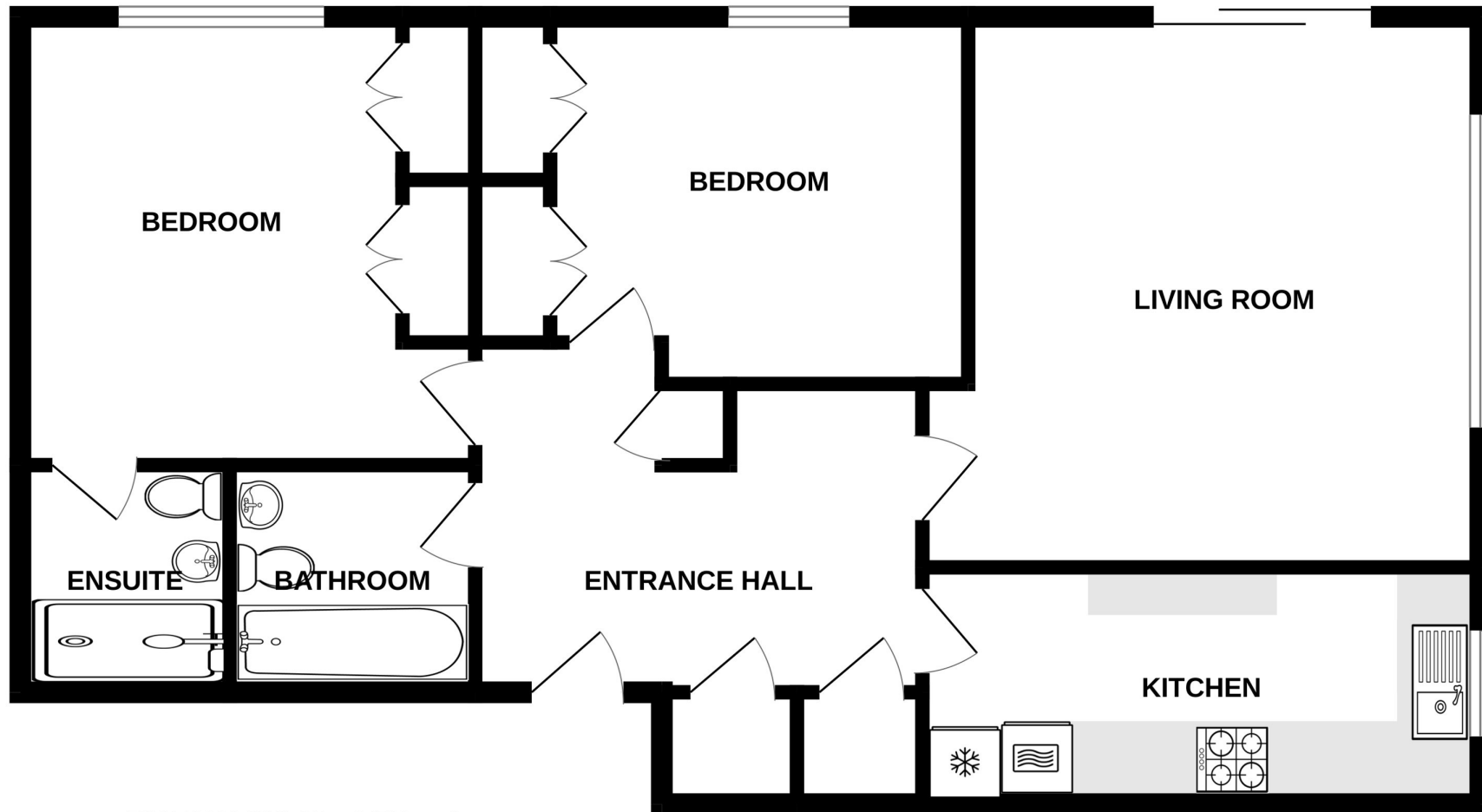
EPC:

'C'

(All details concerning the terms of the Lease & outgoings are subject to verification)



GROUND FLOOR
849 sq.ft. (78.9 sq.m.) approx.



TOTAL FLOOR AREA : 849 sq.ft. (78.9 sq.m.) approx.

Whilst every attempt has been made to ensure the accuracy of the floorplan contained here, measurements of doors, windows, rooms and any other items are approximate and no responsibility is taken for any error, omission or mis-statement. This plan is for illustrative purposes only and should be used as such by any prospective purchaser. The services, systems and appliances shown have not been tested and no guarantee as to their operability or efficiency can be given.
Made with Metropix ©2026

Ref: 1

Whilst every care has been taken in the preparation of these particulars, neither the agents nor the vendor accept any responsibility for error or omission, nor do they constitute an offer or contract. Please note we have not tested any apparatus, fixtures, fittings, or services. Interested parties must undertake their own investigation into the working order of these items. All measurements are approximate whilst photographs and floorplans are provided for guidance only.

LS Leaper
Stanbrook

5 Gildredge Road, Eastbourne BN21 4RB
01323 416716

28 Meads Street, Eastbourne BN20 7QY
01323 737962

website
www.leaperstanbrook.co.uk

email
sales@leaperstanbrook.co.uk