



Connells

Thistle Grove
Welwyn Garden City



Property Description

Situated within the highly sought-after Thistle Grove area of Welwyn Garden City, this well-maintained three-bedroom semi-detached home offers spacious and versatile living accommodation, perfect for growing families.

The property is ideally positioned within close proximity to well-regarded local schools, amenities and transport links, making it a fantastic choice for those looking to balance convenience with a peaceful residential setting.

Upon entering the home, you are welcomed into a bright and inviting space, with accommodation that flows seamlessly throughout. A standout feature is the newly fitted kitchen, finished to a modern standard with ample storage and workspace, creating the perfect environment for both everyday living and entertaining.

To the rear, the property benefits from a conservatory, providing an additional reception area that overlooks the garden and offers a lovely space to relax, dine or enjoy family time throughout the year.

Upstairs, there are three well-proportioned bedrooms, offering flexible living arrangements for families, guests or those working from home. The home is complemented by a family bathroom and is presented in good condition throughout, allowing buyers to move straight in with ease.

Externally, the property truly excels. The generous rear garden provides a fantastic outdoor space, ideal for children, entertaining or simply unwinding. A particular highlight is the garden room, complete with power and lighting.

Lounge/ Diner

19' 9" x 10' 8" (6.02m x 3.25m)

Kitchen

16' 8" x 9' 4" (5.08m x 2.84m)

Conservatory

9' 3" x 8' 9" (2.82m x 2.67m)

Bedroom 1

13' 8" x 10' 11" (4.17m x 3.33m)

Bedroom 2

10' 6" x 8' 7" (3.20m x 2.62m)

Bedroom 3

14' 1" x 6' 5" (4.29m x 1.96m)

Bathroom

7' 3" x 5' 7" (2.21m x 1.70m)

Garden Room

16' 10" x 12' 11" (5.13m x 3.94m)

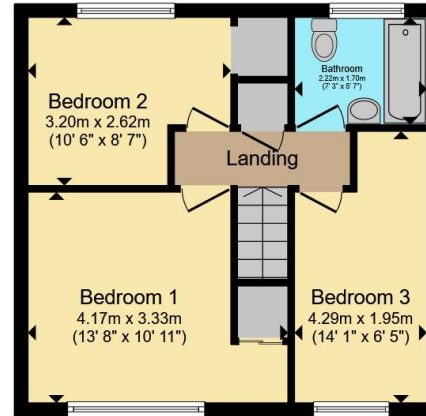




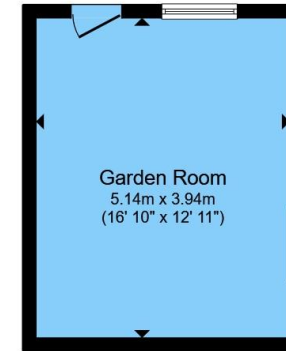




Ground Floor



First Floor



Outbuilding

Total floor area 105.9 m² (1,140 sq.ft.) approx

This floor plan is for illustrative purposes only. It is not drawn to scale. Any measurements, floor areas (including any total floor area), openings and orientation are approximate. No details are guaranteed, they cannot be relied upon for any purpose and they do not form part of any agreement. No liability is taken for any error, omission or misstatement. A party must rely upon its own inspection(s). Powered by www.propertybox.io



To view this property please contact Connells on

T 01707 322 903
E welwyngardencity@connells.co.uk

38 Wigmores North
 WELWYN GARDEN CITY AL8 6PH

EPC Rating: C Council Tax
 Band: D

Tenure: Freehold

view this property online connells.co.uk/Property/WWY307625



1. MONEY LAUNDERING REGULATIONS Intending purchasers will be asked to produce identification documentation at a later stage and we would ask for your co-operation in order that there will be no delay in agreeing the sale. 2. These particulars do not constitute part or all of an offer or contract. 3. The measurements indicated are supplied for guidance only and as such must be considered incorrect. Potential buyers are advised to recheck measurements before committing to any expense. 4. We have not tested any apparatus, equipment, fixtures, fittings or services and it is in the buyers interest to check the working condition of any appliances.

Connells Residential is registered in England and Wales under company number 1489613, Registered Office is Cumbria House, 16-20 Hockliffe Street, Leighton Buzzard, Bedfordshire, LU7 1GN. VAT Registration Number is 500 2481 05.

See all our properties at www.connells.co.uk | www.rightmove.co.uk | www.zoopla.co.uk

Property Ref: WWY307625 - 0007