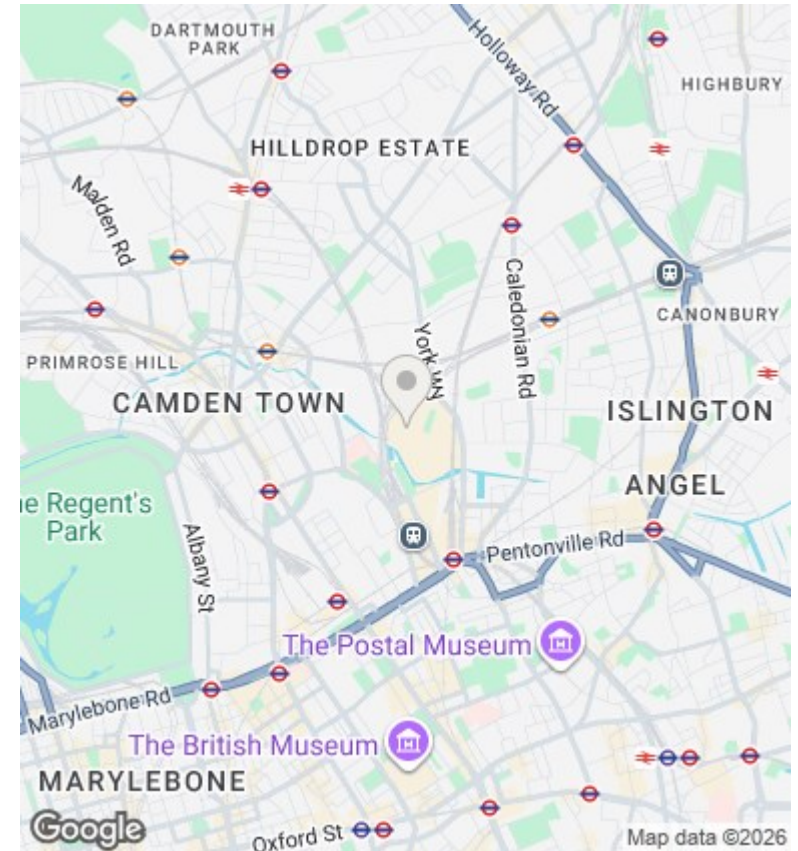
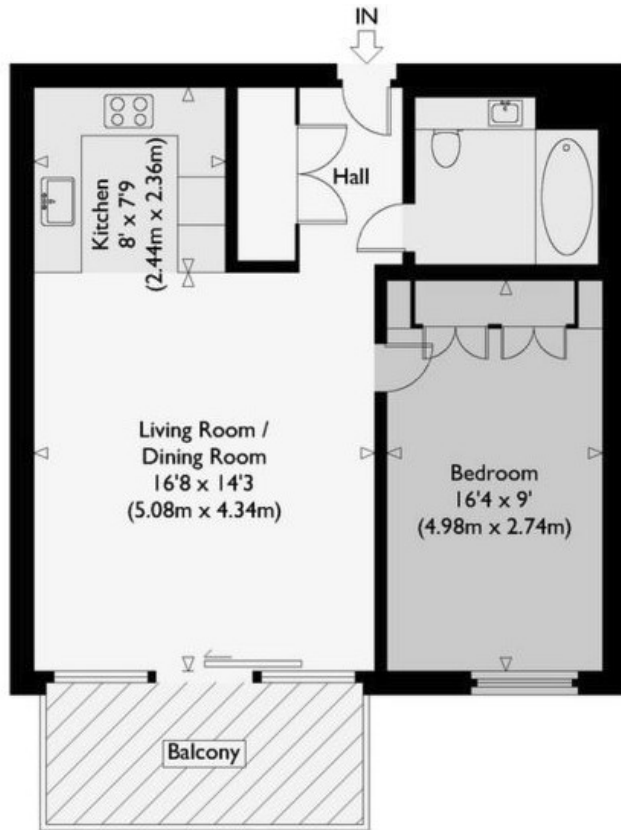


Plimsoll Building, Handyside Street, Kings Cross N1C 4BQ

£698,000

- 24 HOUR CONCIERGE
- Private Balcony
- Fitness Suite
- VIDEO VIEWING AVAILABLE
- Underfloor Heating
- Communal Terrace and Podium Garden
- Wooden Floor
- Residents Lounge/Meeting Room
- Walking distance to Kings Cross, St. Pancras



Viewings

Viewings by arrangement only.
Call 02077225022 to make an appointment.

Council Tax Band

EPC Rating:

B

Energy Efficiency Rating		Current	Potential
<i>Very energy efficient - lower running costs</i>			
(92 plus) A			
(81-91) B		83	83
(69-80) C			
(55-68) D			
(39-54) E			
(21-38) F			
(1-20) G			
<i>Not energy efficient - higher running costs</i>			
England & Wales		EU Directive 2002/91/EC	