

Gainsford Road, Walthamstow, London

A well-presented one-bedroom ground floor apartment, ideally located in the heart of Walthamstow. This bright and inviting home offers comfortable modern living throughout, featuring a generous open-plan living and dining area, a well-equipped kitchen, a good-sized double bedroom, and a contemporary bathroom.

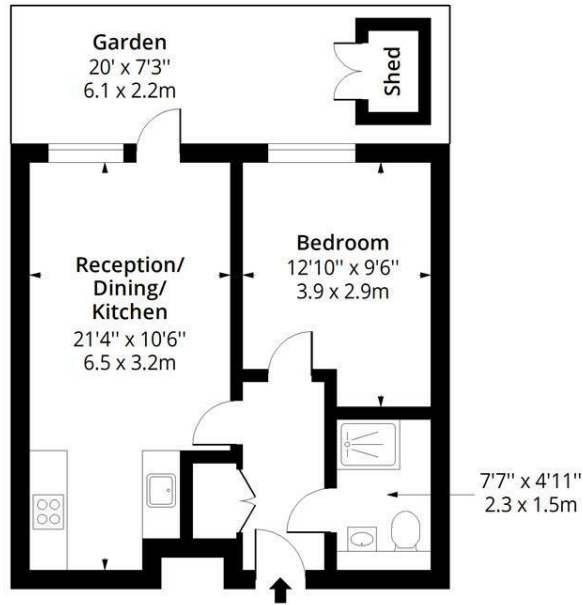
A standout feature of the property is the direct access from the flat to a shared garden space, providing an attractive outdoor area perfect for relaxing, entertaining, or enjoying warmer months.

This property would make an ideal first-time purchase, investment opportunity, or comfortable home for professionals seeking both indoor and outdoor living space.

*** This property is available under the Pocket Living scheme and may be subject to eligibility criteria and resale provisions. Buyers should satisfy themselves regarding scheme requirements and any applicable covenants or restrictions. ***

- Great Central Walthamstow Location
- Open Plan Layout
- Ground Floor Flat
- Communal Garden With A Private Shed
- 0.4m To Blackhorse Road Station
- Bike Storage
- EPC Rating C
- 439 Sq Ft - 40.78 Sq M

£300,000



Ground Floor
Floor Area 439 Sq Ft - 40.78 Sq M

Gainsford Road E17



Approx. Gross Internal Area
439 Sq Ft - 40.78 Sq M
Approx. Gross Shed Area
11 Sq Ft - 1.02 Sq M



Measured according to RICS IPMS2. Floor plan is for illustrative purposes only and is not to scale. Every attempt has been made to ensure the accuracy of the floor plan shown, however all measurements, fixtures, fittings and data shown are an approximate interpretation for illustrative purposes only. 1 sq m = 10.76 sq feet.

Energy Efficiency Rating		Current	Potential
Very energy efficient - lower running costs			
(92 plus) A			
(81-91) B			
(69-80) C		79	79
(55-68) D			
(39-54) E			
(21-38) F			
(1-20) G			
Not energy efficient - higher running costs			
England & Wales		EU Directive 2002/91/EC	

Environmental Impact (CO ₂) Rating		Current	Potential
Very environmentally friendly - lower CO ₂ emissions			
(92 plus) A			
(81-91) B			
(69-80) C			
(55-68) D			
(39-54) E			
(21-38) F			
(1-20) G			
Not environmentally friendly - higher CO ₂ emissions			
England & Wales		EU Directive 2002/91/EC	