



Gloucester Place Mews, W1U

£995 Per week

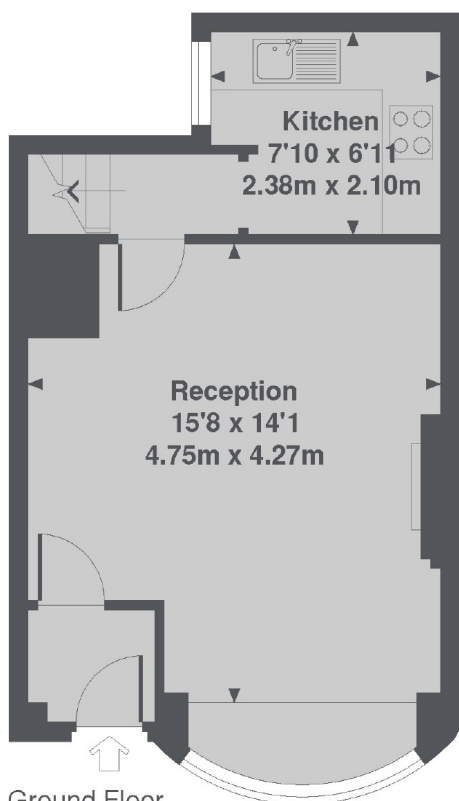
A modern two bedroom mews house on a quiet street in Marylebone. The property has a good sized reception room, separate kitchen, two double bedrooms and a bathroom. *Please note that the furniture has been virtually staged*

Gloucester Place Mews sits close to The Portman Estate's New Quebec Street and Seymour Place, a favourite for locals, providing a village vibe in the heart of London. It is only a short walk from the hustle and bustle of Oxford Street and Marble Arch.

Features

- Two Bedrooms
- One Bathroom
- Unfurnished
- Owned and Managed by The Portman Estate
- Complimentary Membership to Portman Concierge

Gloucester Place Mews, London, W1U



Gloucester Place Mews, W1U
Total Approx. Floor area 742 Sq. Ft. (69.0 Sq. M.)

Dexters

Marylebone
53-55 Weymouth Street
London
W1G 8NJ
Lettings
0207 224 5545

Energy Rating: D. We aim to make our particulars both accurate and reliable. However they are not guaranteed; nor do they form part of an offer or contract. If you require clarification on any points then please contact us, especially if you're traveling some distance to view. Please note that appliances and heating systems have not been tested and therefore no warranties can be given as to their good working order.

 **RICS** | Regulated
Estate Agent
and Letting Agent

[dexters.co.uk](https://www.dexters.co.uk)