

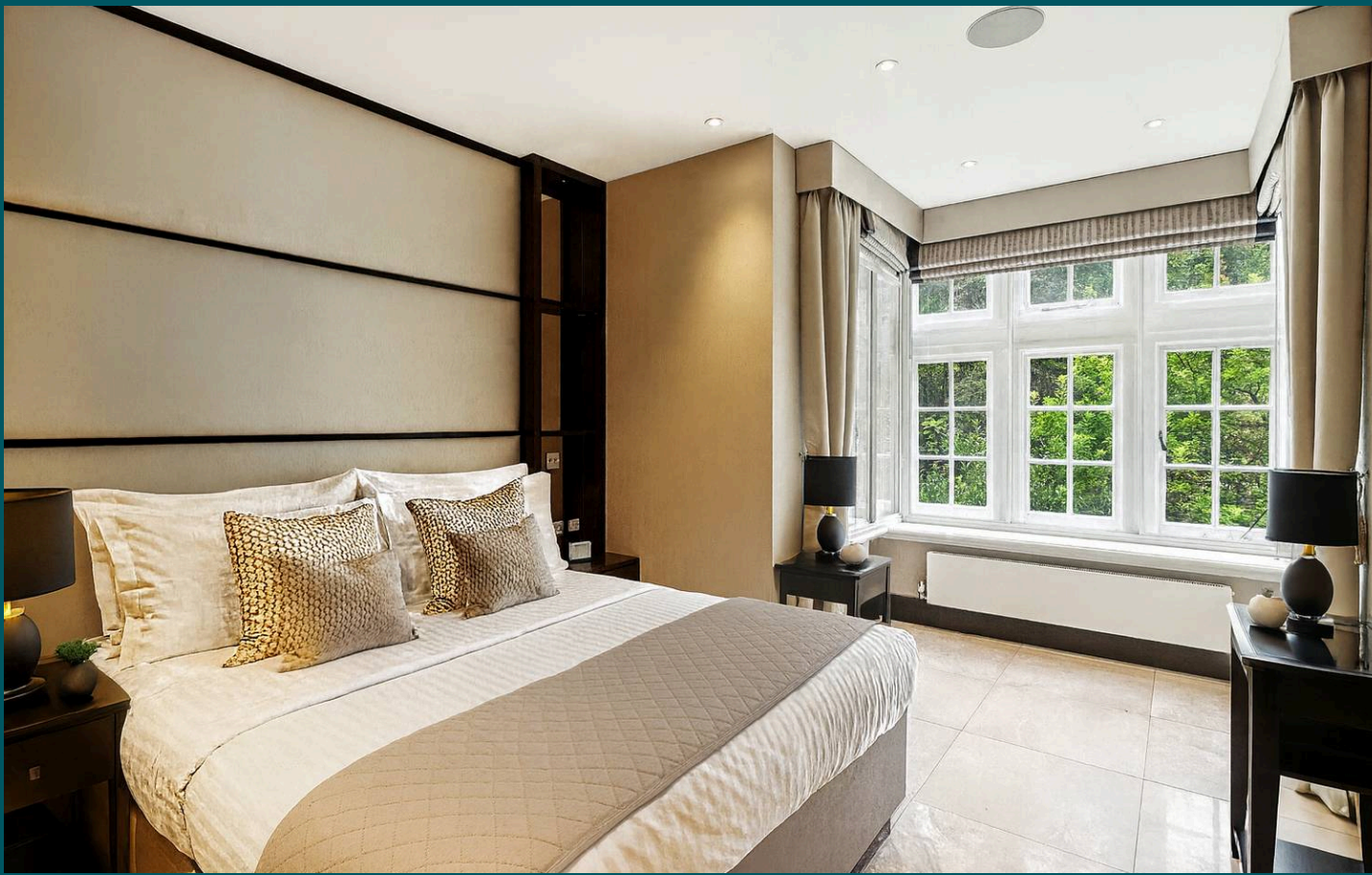


KNIGHTSBRIDGE
PRIME PROPERTY



Parkside Knightsbridge, SW1X
London

£2,250 per week (£9,750 pcm)



Parkside Knightsbridge, London, SW1X

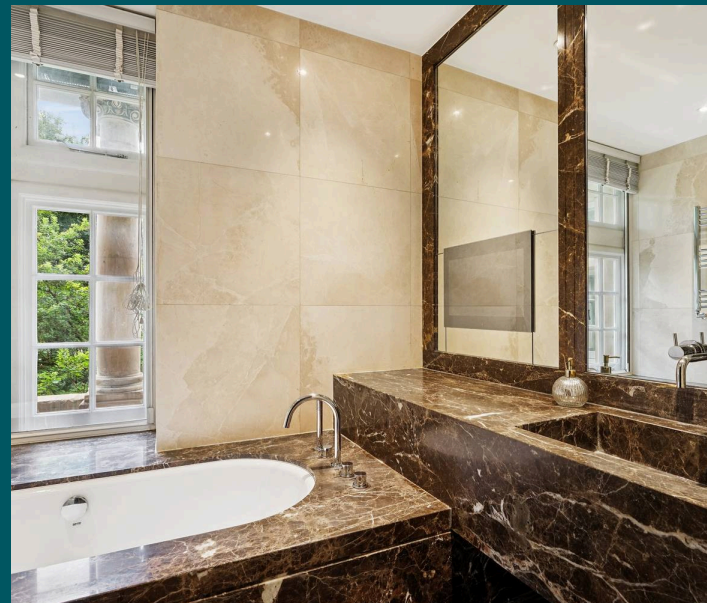
An Outstanding Recently Refurbished Three Bedroom, Four Bathroom Lateral Apartment, With Terrace Overlooking Hyde Park (1,500 Sq Ft / 139 Sq Meters...

Council Tax band: TBD

EPC Energy Efficiency Rating: C

EPC Environmental Impact Rating: D

- Refurbished Three Bedroom Apartment
- Separate Reception Room
- Interior Designed To The Highest Standards Throughout
- Separate Eat-In Kitchen
- 24 Hr Portered Building
- Air Conditioning In All Rooms
- Digital Home Automation System
- Terrace Overlooking Hyde Park
- Under Floor Heating
- One Minute Walk To Knightsbridge Underground Train Station











Parkside Knightsbridge, SW1X

Approximate Gross Internal Area
124.24 sq m / 1,337 sq ft

(CH = Ceiling Heights)



First Floor

This plan is not to scale. It is for guidance and not for valuation purposes.
All measurements and areas are approximate only, and have been prepared in accordance with the current edition of the RICS Code of Measuring Practice.
© Fulham Performance.



Knightsbridge Prime Property

1 Knightsbridge Green, London - SW1X 7QA

020 8051 4200

enquiries@knightsbridgeprimeproperty.com

knightsbridgeprimeproperty.com/



KNIGHTSBRIDGE