

**182 FRANCIS CLOSE
EWELL, EPSOM
SURREY
KT19 0JT
£650,000**

DETACHED HOUSE

THREE BEDROOMS

TWO RECEPTION ROOMS

8'6 X 8'5 KITCHEN

GAS CENTRAL HEATING

MAJORITY DOUBLE GLAZED

47' X 30' REAR GARDEN

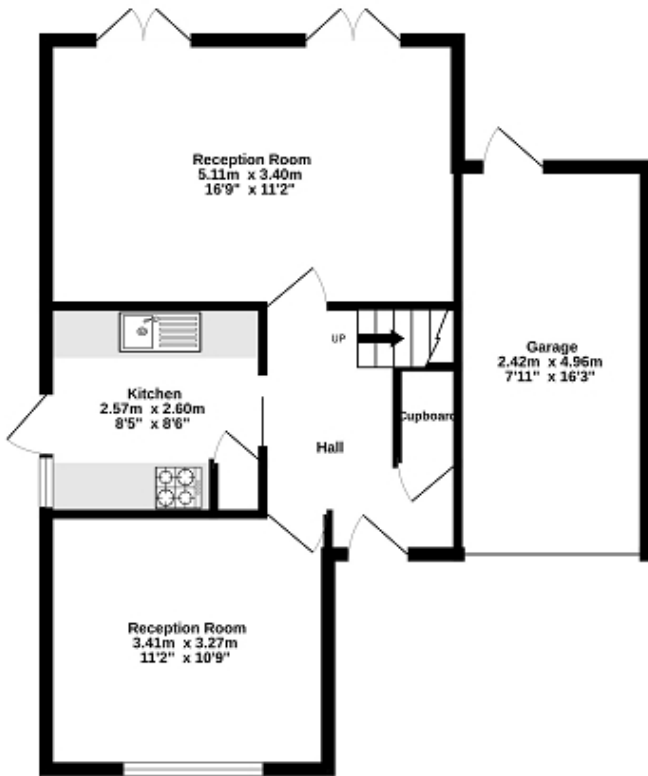
GARAGE WITH OWN DRIVEWAY

CUL DE SAC LOCATION

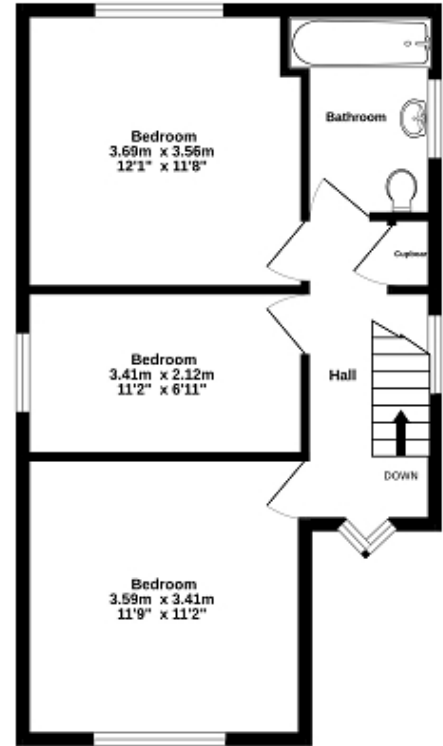
WELL PRESENTED

NO FORWARD CHAIN

Ground Floor
54.8 sq.m. (590 sq.ft.) approx.



1st Floor
43.0 sq.m. (463 sq.ft.) approx.



TOTAL FLOOR AREA: 97.8 sq.m. (1,053 sq.ft.) approx.

Whilst every attempt has been made to ensure the accuracy of the floorplan contained here, measurements of doors, windows, rooms and any other items are approximate and no responsibility is taken for any error, omission or mis-statement. This plan is for illustrative purposes only and should be used as such by any prospective purchaser. The services, systems and appliances shown have not been tested and no guarantee as to their operability or efficiency can be given.
Made with Metropix ©2026

