

# Aylsham Drive

Ickenham • Middlesex • UB10 8UE

PCM: £1,300 PCM



coopers  
est 1986

One bedroom second floor apartment situated in a popular development just footsteps to Ickenham High Street and peacefully nestled within walking distance to shops, amenities and bus/train connections. The property briefly comprises of the hallway, lounge/diner, kitchen, bathroom and double bedroom. Outside the property benefits from a private car park and well maintained communal gardens.

One bedroom apartment

Second floor

Separate kitchen

Lounge/diner

Double bedroom

Popular location for tenants

Communal garden area

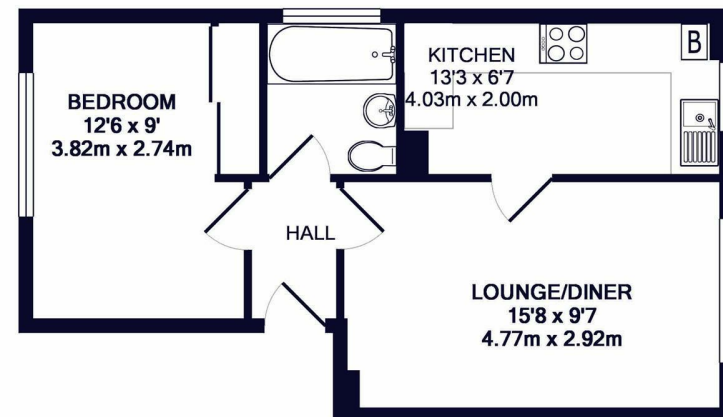
Resident parking

Close to Central/Met/Piccadilly

Walking distance to local shops

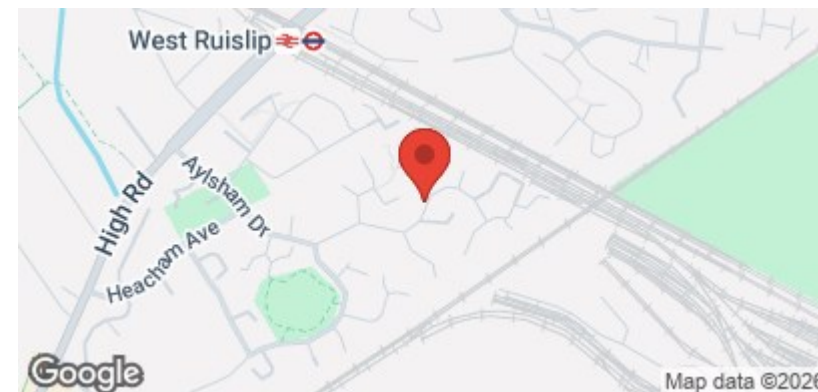
**Available Date**

16th February 2026



TOTAL APPROX. FLOOR AREA 409 SQ.FT. (38.0 SQ.M.)

Whilst every attempt has been made to ensure the accuracy of the floor plan contained here, measurements of doors, windows, rooms and any other items are approximate and no responsibility is taken for any error, omission, or mis-statement. This plan is for illustrative purposes only and should be used as such by any prospective purchaser. The services, systems and appliances shown have not been tested and no guarantee as to their operability or efficiency can be given  
Made with Metropix ©2018

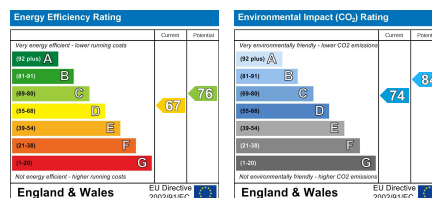


**coopers**  
est 1986

**01895 625 625**

126-128 High Street, Ruislip,  
Middlesex, HA4 8LL  
rl@coopersresidential.co.uk

**CoopersResidential.co.uk**



Important Notice: These particulars, whilst believed to be accurate are set out as a general outline only for guidance and do not constitute any part of an offer or contract. Intending purchasers should not rely on them as statements or representation of fact, but must satisfy themselves by inspection or otherwise has the authority to make or give any representation or warranty in respect of the property.