



42 BRADLEY CRESCENT,  
SHIREHAMPTON, BS11 9SN

---

GOODMAN  
& LILLEY



POSITIONED IN THE CHARMING VILLAGE OF SHIREHAMPTON, THIS DELIGHTFUL PERIOD HOUSE ON BRADLEY CRESCENT OFFERS A PERFECT BLEND OF COMFORT AND CONVENIENCE. WITH TWO SPACIOUS DOUBLE BEDROOMS, THIS PROPERTY IS IDEAL FOR FAMILIES OR COUPLES SEEKING A SERENE LIVING ENVIRONMENT.

### Entrance Hall

Entrance via hardwood door, doors to all rooms, radiator, stairs rising to first floor.

### Lounge

uPVC double glazed window to front aspect, feature open fireplace, radiator.

### Office

uPVC double glazed window to rear aspect, radiator

### Kitchen/Diner

uPVC double glazed patio doors leading into the rear garden. Fitted with a range of wall and base units with roll top work surfaces. Stainless steel gas hob with stainless steel extractor fan over. Electric oven. Stainless steel sink with mixer tap over, plumbing for washing machine and dishwasher. Integrated microwave oven. opening into a good size pantry. Wooden flooring, radiator.

### First Floor Landing

Access to loft space, doors leading to all rooms.

### Bedroom 1

uPVC double glazed window to front aspect, feature fireplace, radiator.

### Bathroom

uPVC double glazed window to rear aspect. Four piece bathroom comprising of: Enclosed shower unit, panel bath, low level wc, sink in vanity unit, airing cupboard, heated towel rail.

### Bedroom 2

uPVC double glazed window to rear aspect, radiator, feature fireplace.

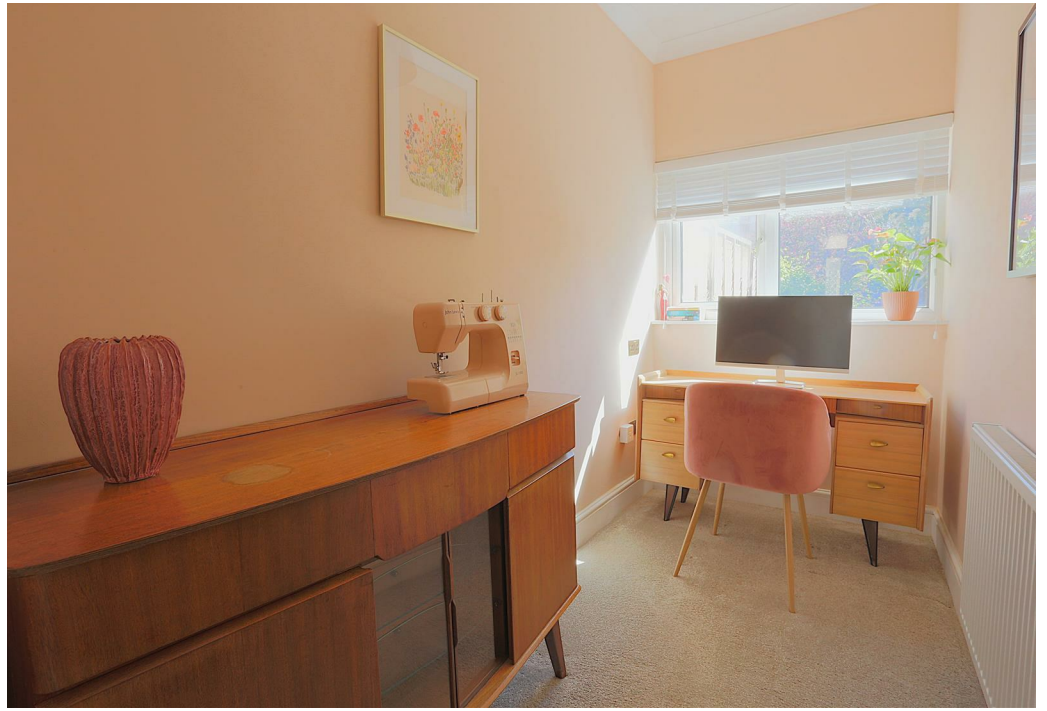
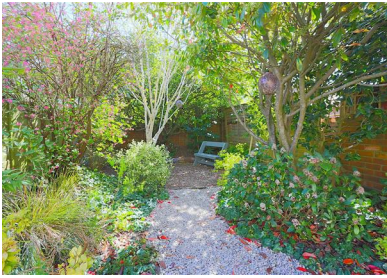
### Gardens

This pretty garden is enclosed by a boundary wall. There is a storage shed with Combi-Boiler in. A decking area, a good size lawn bordered by mature plants and shrubs. There is access to the side lane via a wooden gate.

- 
- Period home with high ceilings and feature fireplace
  - Village Location
  - Pretty Rear Garden
  - Close to all Amenities
  - 2 spacious double bedrooms
  - Four Piece Bathroom
  - End of Terraced Home
  - Close to all Transport Links.

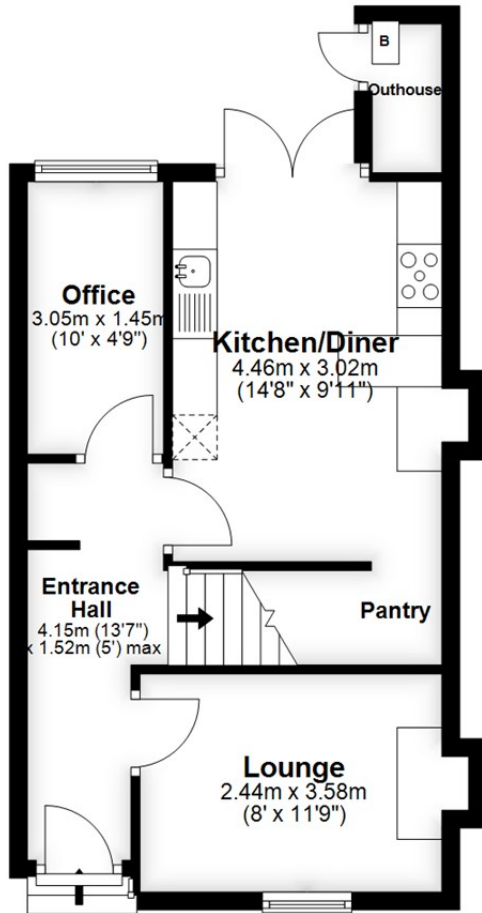


£300,000



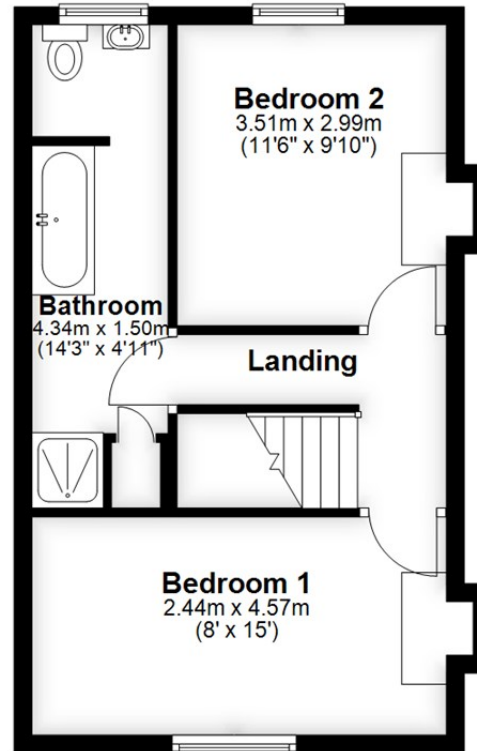
## Ground Floor

Approx. 38.1 sq. metres (409.9 sq. feet)



## First Floor

Approx. 36.6 sq. metres (393.8 sq. feet)



Total area: approx. 74.7 sq. metres (803.7 sq. feet)

HENLEAZE - 0117 2130777  
henleaze@goodmanlilley.co.uk

PORTISHEAD - 01275 430440  
sales@goodmanlilley.co.uk

SHIREHAMPTON - 0117 2130333  
shire@goodmanlilley.co.uk

Zoopla.co.uk

rightmove



WWW.GOODMANLILLEY.CO.UK

These particulars are for general guidance only. They do not form or constitute any part of an offer or contract. Goodman & Lilley has not carried out structural surveys of the property. The services, appliances or specific fittings mentioned in these details have not been tested. Every attempt is made to ensure accuracy, however all photographs, measurements, floor plans and distances are for illustrative purposes only. They must not be relied upon when purchasing carpets and or other fixtures & fittings. Lease details, service charges and ground rents are given as a guide only. They should be checked and confirmed by a licensed solicitor prior to exchange of contracts. The copyright of all details, photographs and floor plans remain exclusive to Goodman & Lilley.