



1 Staunbury Cottages Church Lane, Bristol, BS14 0HD

£625,000

This four double bedroom character cottage in the sought-after Whitchurch area on the southern side of Bristol. Dating from around 1700 and extended over time, it provides deceptively spacious and flexible accommodation, well suited to families and potentially multi generational living.

The ground floor includes a beautiful sitting room featuring a fireplace with log-burning stove, plus a generous open-plan kitchen/dining room leading into a vaulted conservatory, creating a bright living space with garden views and access to the approximately 100ft south-facing mature garden, which backs onto open farmland. A utility room and ground floor WC add day-to-day practicality. There is also a dog wash station in the garage, ideal for pet owners and walkers.

Upstairs are four large double bedrooms, including a master bedroom with en-suite, and a family bathroom with free-standing bath. The layout offers potential for reconfiguration, including the possibility of creating an annexe, subject to any necessary consents. The property has an EPC rating of C and falls within Council Tax Band D.

Entrance Porch

Sitting Room



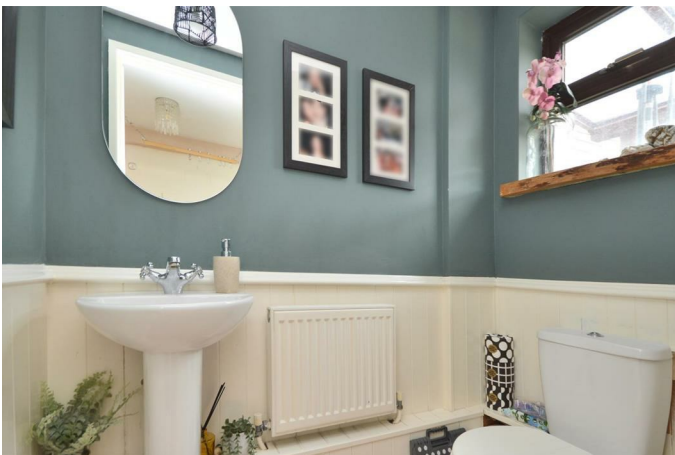
Open Plan Kitchen / Diner / Family Room



Utility Room



Ground Floor WC



Double Garage



First Floor Landing

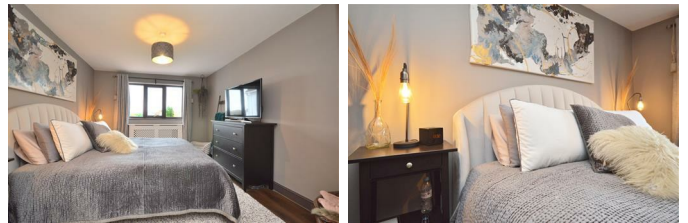
Principle Bedroom



En-Suite



Bedroom Two



Bedroom Three



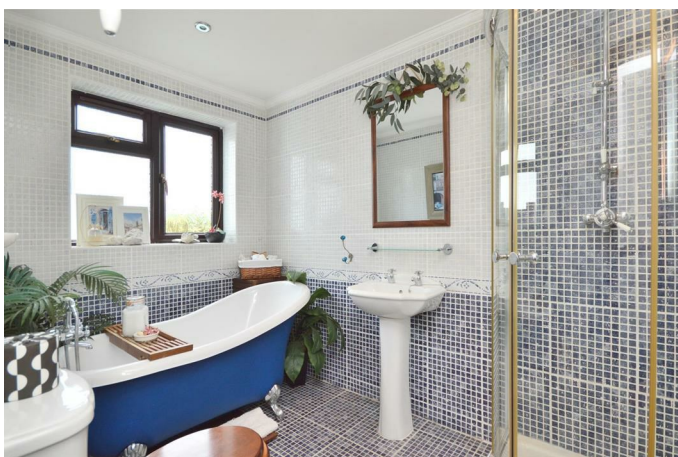
View to Rear



Bedroom Four



Bathroom



Outside

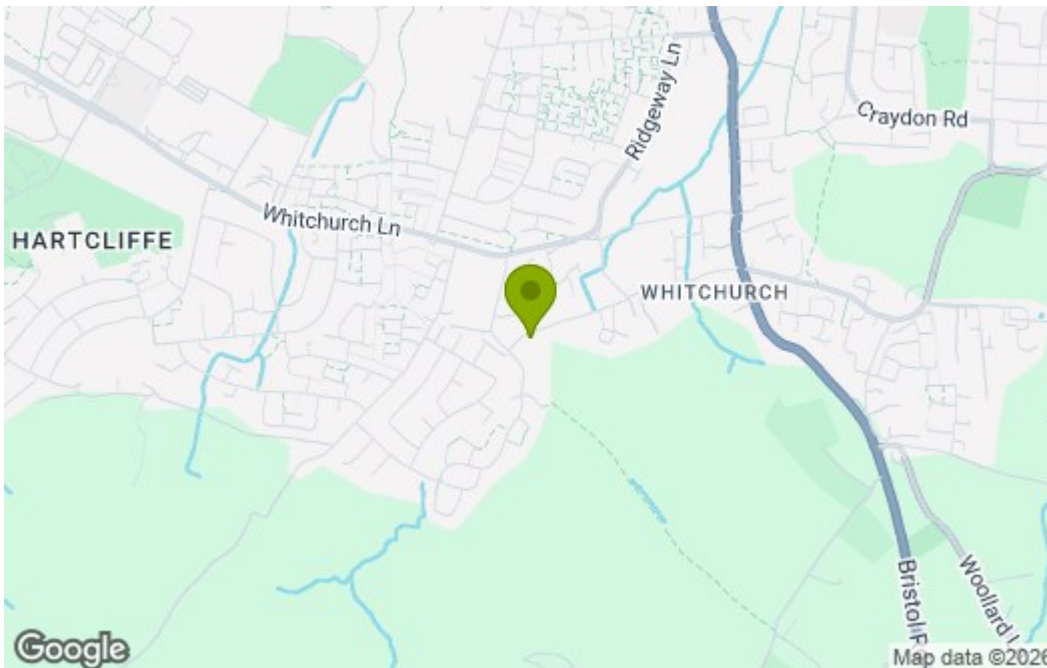


Floor Plan

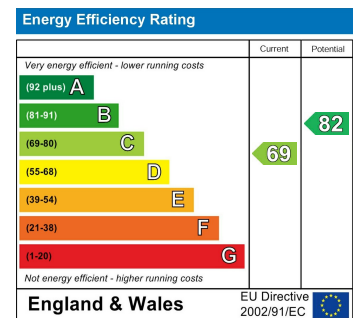


Total area: approx. 191.3 sq. metres (2059.3 sq. feet)
1 Staunbury Cottages, Bristol

Area Map



Energy Efficiency Graph



These particulars, whilst believed to be accurate are set out as a general outline only for guidance and do not constitute any part of an offer or contract. Intending purchasers should not rely on them as statements of representation of fact, but must satisfy themselves by inspection or otherwise as to their accuracy. No person in this firm's employment has the authority to make or give any representation or warranty in respect of the property.