



GARDEN STIRLING BURNET

**ASH PLACE**  
BISHOPBRIGGS, GLASGOW, G64



2



1

EPC  
RATING

B

COUNCIL  
TAX BAND

D



Situated in a modern development in the popular commuter town of Bishopbriggs, this well-presented second-floor flat offers bright, contemporary interiors ideally suited to first-time buyers, professionals, or investors. The home centres around a spacious open-plan living, dining, and kitchen area, fitted with integrated appliances and a breakfast bar and enhanced by generous natural light and a Juliet balcony. There are two well-proportioned bedrooms, including a principal with storage, and a stylish shower room with contemporary tiling. Further benefits include secure entry, residents' parking, and excellent local amenities and transport links nearby, with Glasgow city centre easily accessible.

Extras: All fitted floor and window coverings and light fittings are included.

## FEATURES

- Two-bedroom flat on the second floor
- Popular commuter town location
- Located close to amenities and regular transport links
- Accessed through a secure shared stairwell
- Welcoming hallway with storage
- Generous living/dining kitchen with Juliet balcony
- Modern kitchen with breakfast bar
- Two double bedrooms
- Stylish shower room
- Communal gardens
- Off-street residents' parking
- Gas central heating and full double glazing





**OFFERS TO:  
40 High Street  
Glasgow, G1 1NL**

**Tel: 0141 473 1124 or  
07761 280 840**

[propertysales@gsbsolicitors.co.uk](mailto:propertysales@gsbsolicitors.co.uk)



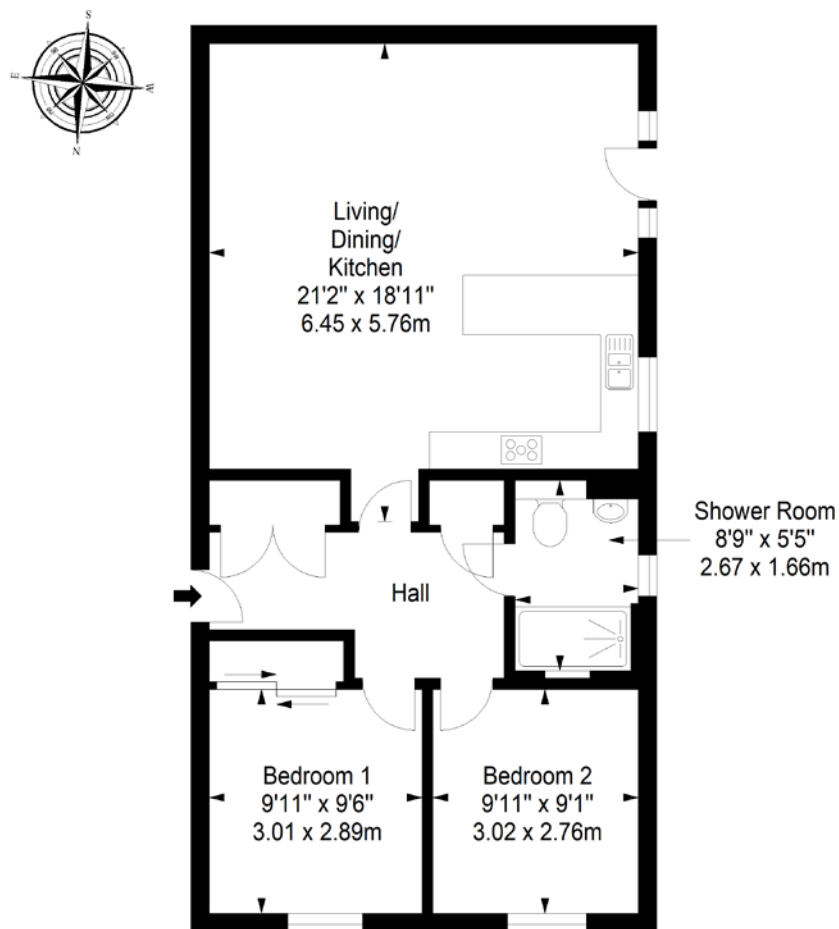
#### HOUSE SALES

If you have a house to sell, we provide free pre-sales advice, including valuation. We will visit your home and discuss in detail all aspects of selling and buying, including costs and marketing strategy, and will explain GSB Properties' comprehensive services.

1. While these Sales Particulars are believed to be correct, their accuracy is not warranted and they do not form any part of any contract. All sizes are approximate.
2. Interested parties are advised to note interest through their solicitor as soon as possible in order to be kept informed should a Closing Date be set. The seller will not be bound to accept the highest or any offer.

## FLOORPLAN

**Second Floor**  
Approx. 67.0 sq. metres (721.2 sq. feet)



Total area: approx. 67.0 sq. metres (721.2 sq. feet)