



Webbs

Helping people move since 1994

Ryle Street | Walsall | WS3 3AR

Asking Price £199,000

 **Webbs**
estate agents

Summary

****IMPROVED THROUGHOUT******OPEN PLAN LIVING******THREE GENEROUS BEDROOMS******REFFITTED KITCHEN******REFITTED BATHROOM******POPULAR LOCATION******DECEPTIVELY SPACIOUS******GENEROUS PLOT******PERFECT FOR EXTENDING SUBJECT TO PLANNING********************

Welcome to this charming three-bedroom house located on Ryle Street in Walsall. This property has been thoughtfully improved throughout, offering a delightful blend of modern living and comfort. As you approach the home, you are greeted by a well-maintained paved patio that leads to the entrance hall.

Upon entering, you will find an open-plan living kitchen diner that is both spacious and inviting. The modern fitted kitchen is perfect for those who enjoy cooking and entertaining, providing ample space for family gatherings. Additionally, there is a separate WC on the ground floor for added convenience.

Moving to the first floor, you will discover three generously sized bedrooms, each offering a comfortable retreat for rest and relaxation. The modern fitted bathroom is located at the rear, ensuring that all essential amenities are easily accessible.

One of the standout features of this property is the large garden at the back, which boasts a paved patio and well-maintained lawns. This outdoor space is ideal for family activities, gardening, or simply

Key Features

- COMPLETELY REFURBISHED THREE BEDROOM HOME
- REFITTED KITCHEN, BATHROOM AND GUEST WC
- SPACIOUS PLOT WITH 280m² BACK GARDEN
- POPULAR LOCATION, CLOSE TO ALL LOCAL AMENITIES
- MOTIVATED SELLER
- MODERN OPEN-PLAN LIVING, KITCHEN & DINING AREA (74m² LIVING SPACE)
- FINISHED INSIDE & OUT WITH NEW HEATING, REWIRED ELECTRICS, AND STYLISH FITTINGS
- BLOCK PAVED DRIVEWAY WITH PARKING & SECURE ENTRANCE (77m² DRIVE)
- NO UPPER CHAIN-READY TO MOVE IN
- CALL WEBBS TO SECURE YOUR VIEWING ON 01922 663399!!

Rooms and Dimensions

Entrance Hall

Open Plan Living Kitchen Diner

15'2" x 19'3" (4.630m x 5.884m)

Guest WC

4'4" x 2'4" (1.326m x 0.718m)

First Floor Landing

Bedroom One

11'10" x 8'9" (3.610m x 2.675m)

Bedroom Two

10'5" x 8'1" (3.177m x 2.479m)

Bedroom Three

9'0" x 7'1" (2.759m x 2.183m)

Family Bathroom

6'0" x 5'8" (1.849m x 1.749m)

Identification Checks B





Webbs
Helping people move since 1994



Webbs
Helping people move since 1994



Webbs
Helping people move since 1994



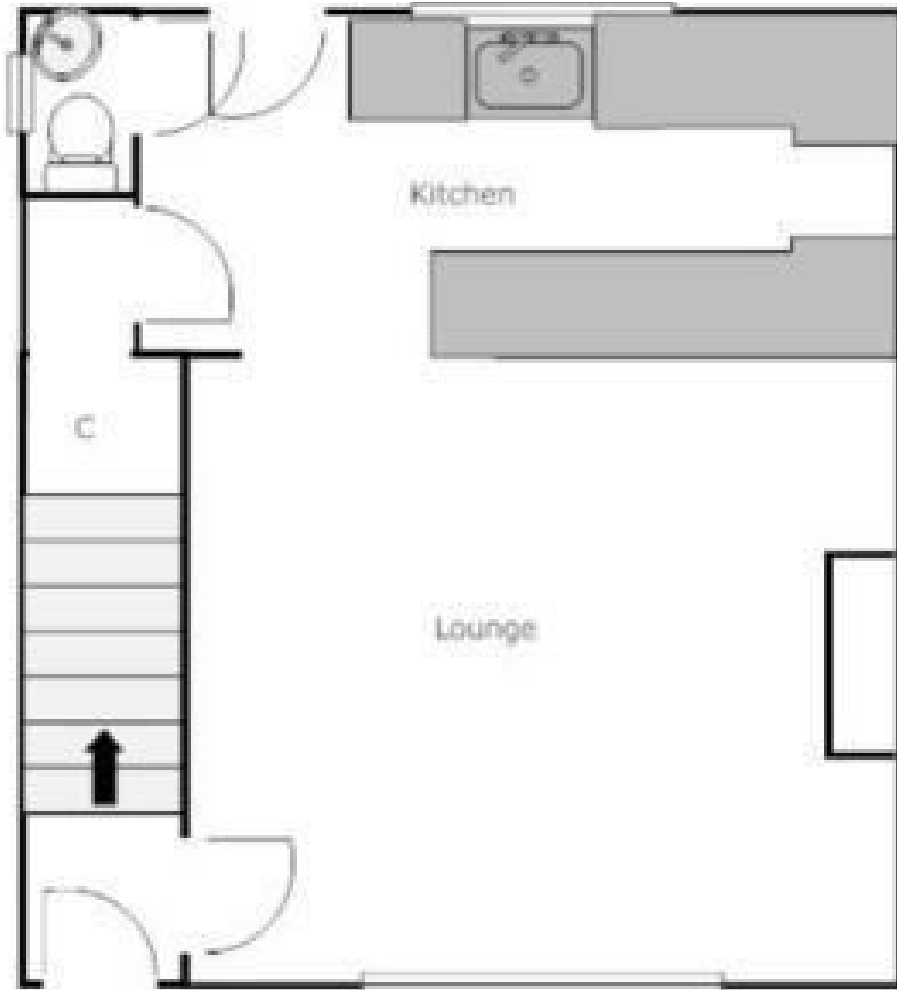
Webbs
Helping people move since 1994



Webbs
Helping people move since 1994



Webbs
Helping people move since 1994



Webbs Estate Agents - endeavour to maintain accurate depictions of properties in Virtual Tours, Floor Plans and descriptions, however, these are intended only as a guide and purchasers must satisfy themselves by personal inspection.

