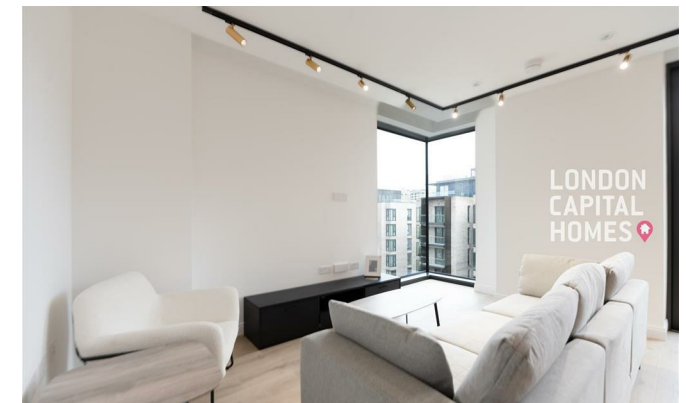


**LONDON  
VICTORIA  
GROUPS** 



## **Siena House, 9 Bollinder Place**

, London EC1V 2AU

- Two-bedroom, two-bathroom apartment
- 24-hour concierge service
- Landscaped communal gardens and courtyards
- Private screening room
- EPC-B
- Open-plan living and dining area
- Residents' gym and fitness suite
- Residents' lounge and co-working spaces
- Ideally positioned close to Old Street, Angel, and Farringdon
- CTB-F

**£4,246 Per Month**



Local Authority **Islington**  
Council Tax Band **F**  
EPC Rating **B**



Views over landscaped courtyard



**London Office Office**  
Spaces Victoria, 25 Wilton Road, Pimlico,  
London, SW1V 1LW

**Contact**  
020 3084 3094  
[XL@londonvictoriagroups.co.uk](mailto:XL@londonvictoriagroups.co.uk)  
[www.londonvictoriagroups.co.uk](http://www.londonvictoriagroups.co.uk)

Agents Note: Whilst every care has been taken to prepare these particulars, they are for guidance purposes only. All measurements are approximate and for general guidance purposes only and whilst every care has been taken to ensure accuracy, they should not be relied upon and potential buyers/tenants are advised to recheck the measurements.

