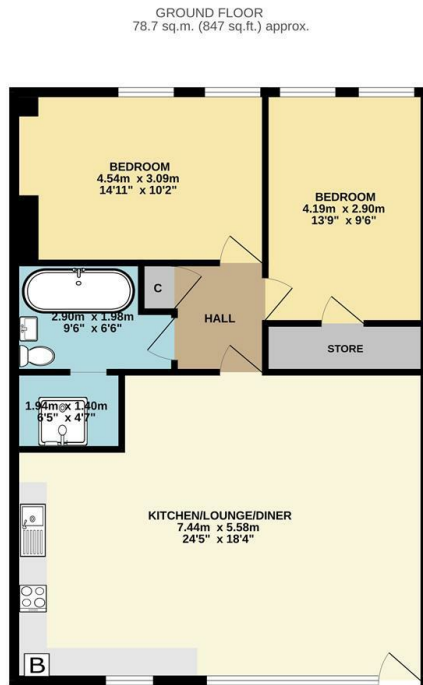




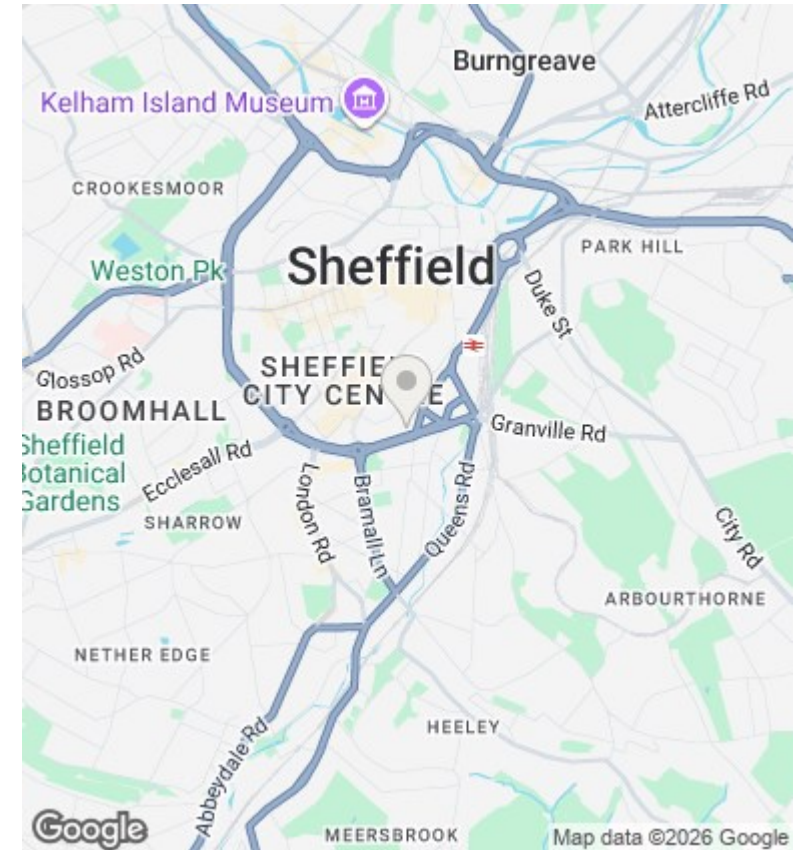
4 Universe Works, 97B Mary Street, Sheffield, S1 4RT

Offers Over £150,000

- No onward chain
- Allocated parking space
- Modern bathroom
- Ground floor apartment
- Open plan kitchen/diner/lounge
- Small gated development
- Two double bedrooms



TOTAL FLOOR AREA: 78.7 sq.m. (847 sq.ft.) approx.
Measurements are approximate. Not to scale. For illustrative purposes only.
Made with Metaphor (2025)



Directions

Viewings

Viewings by arrangement only. Call 01142 687777 to make an appointment.

Council Tax Band

C

EPC Rating:

C

Energy Efficiency Rating		Current	Potential
<i>Very energy efficient - lower running costs</i>			
(92 plus) A			
(81-91) B			
(69-80) C		78	78
(55-68) D			
(39-54) E			
(21-38) F			
(1-20) G			
<i>Not energy efficient - higher running costs</i>			
England & Wales		EU Directive 2002/91/EC	