



Hildyard Road, SW6

£800,000

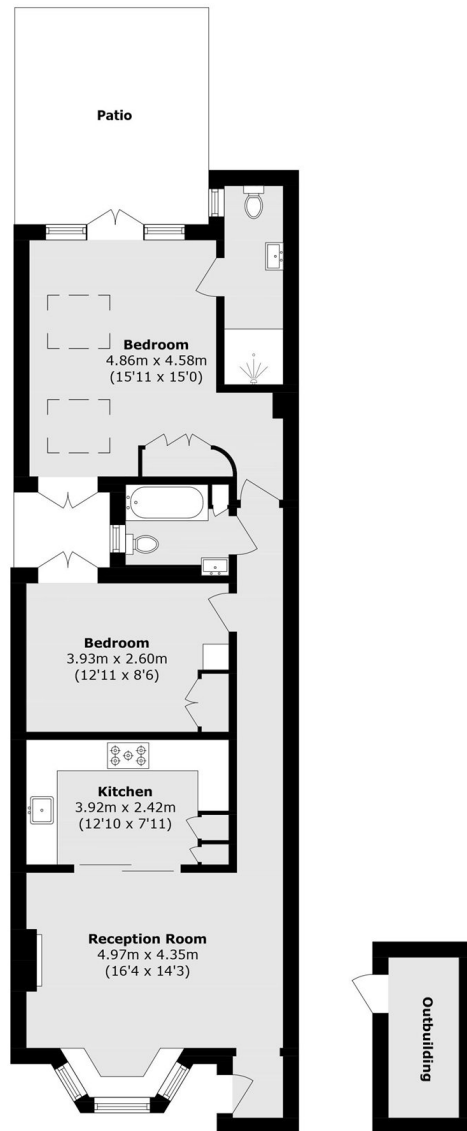
A beautifully and tastefully renovated two-bedroom garden flat, situated in the end of terraced house on a quiet residential street enviably positioned between West Brompton and Fulham Broadway. The property features a spacious bay-fronted reception and dining room, with the dining area thoughtfully designed around the bay window and complemented by bespoke banquette seating. A well-equipped semi open-plan kitchen can be cleverly concealed via archway pocket doors, offering both flexibility and style. Hardwood flooring and an original fireplace complete this elegant living space.

Hildyard Road is a quiet and highly sought-after residential street, lined with attractive four-storey Victorian terraced conversions. The nearest station is West Brompton station, while Fulham Broadway station and Earls Court tube stations are also just a short walk away, providing excellent transport links across London. A leisurely stroll brings you to the boutique shops, bars, and restaurants of Parsons Green, while the world-class amenities, museums, and cultural attractions of South Kensington are also within easy reach.

Features

- Open Plan Kitchen Living
- Share Of Freehold
- Private Two Tiered Patio
- Two Double Bedrooms
- Immaculately Refurbished
- Own Front Door

Hildyard Road, London, SW6



Lower Ground Floor

Total area (approx.): 77.7 sq. m (836.3 sq. ft)
Outbuilding area (approx.): 4.2 sq. m (45.2 sq. ft)