



12 Larchwood Drive, Inverness, IV2 3DG

Offers Over £165,000

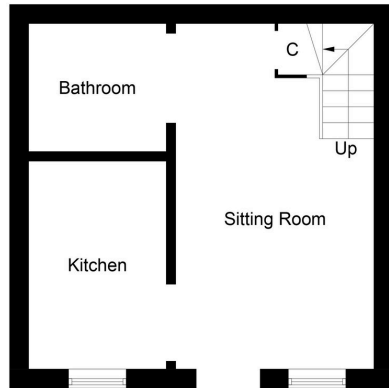
🛏️ 2 🪑 2 🚗 1



- HOME REPORT UNDER EPC LINK
- TWO DOUBLE BEDROOMS
- WALK-IN CONDITION
- CLOSE TO LOCAL AMENITIES
- IDEAL FOR 1ST TIME BUYER, BUY TO LET OR AIR BNB
- MODERN END-TERRACED PROPERTY
- BRIGHT AND WELL PRESENTED
- POPULAR RESIDENTIAL AREA
- ENCLOSED GARDEN WITH DECKING AREA
- VIEWING RECOMMENDED



This well presented end-terraced property is located in the popular Milton of Leys area of Inverness. This modern and stylish property enjoys bright and open plan living, two double bedrooms, two bathrooms and a garden area which will appeal to a variety of buyers.



Ground Floor



First Floor

Illustration for identification purposes only, measurements are approximate, not to scale. Fourlabs.co © (ID1290022)

