



HOMES BY VICTORIA
ESTATE AGENCY

Shottery Close, Redditch, B98 0GE

Offers Over £150,000

1 2 1



An exceptional one bedroom ground floor apartment offering a rare level of privacy, complete with its own private front door, set within an exclusive gated development in the highly sought-after Ipsley area of Redditch.

homesbyvictoria.co.uk

victoria@homesbyvictoria | 07833 136521

FOR M HOMES MIDLANDS LIMITED trading as Homes By Victoria Company Number: 13688840 VAT no: 470190115



HOMES BY VICTORIA
ESTATE AGENCY



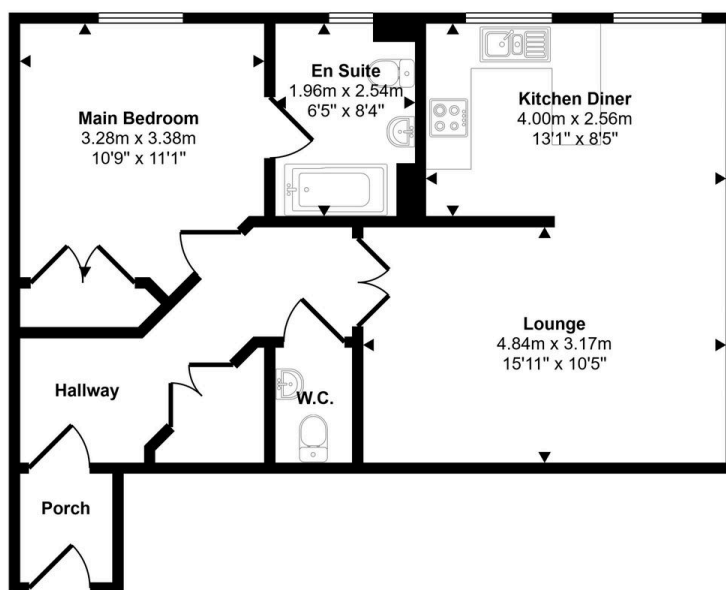
HOMES BY VICTORIA

ESTATE AGENCY

Key Features

- Private ground floor apartment with its own front door
- Light, elegant accommodation with generous proportions
- Spacious yet cosy lounge with calming neutral décor
- Guest WC and practical storage
- 104 year remaining on the lease
- Exclusive gated development in sought-after Ipsley
- Stylish kitchen/diner
- Double bedroom with contemporary en-suite bathroom
- Allocated parking plus visitor spaces
- EPC C and Council tax band B

Approx Gross Internal Area
58 sq m / 623 sq ft



Floorplan

This floorplan is only for illustrative purposes and is not to scale. Measurements of rooms, doors, windows, and any items are approximate and no responsibility is taken for any error, omission or mis-statement. Icons of items such as bathroom suites are representations only and may not look like the real items. Made with Made Snappy 360.